

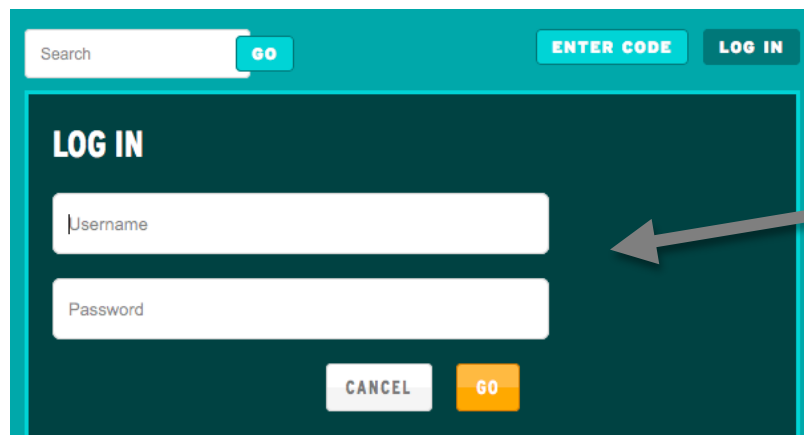


## What is BrainPOP?

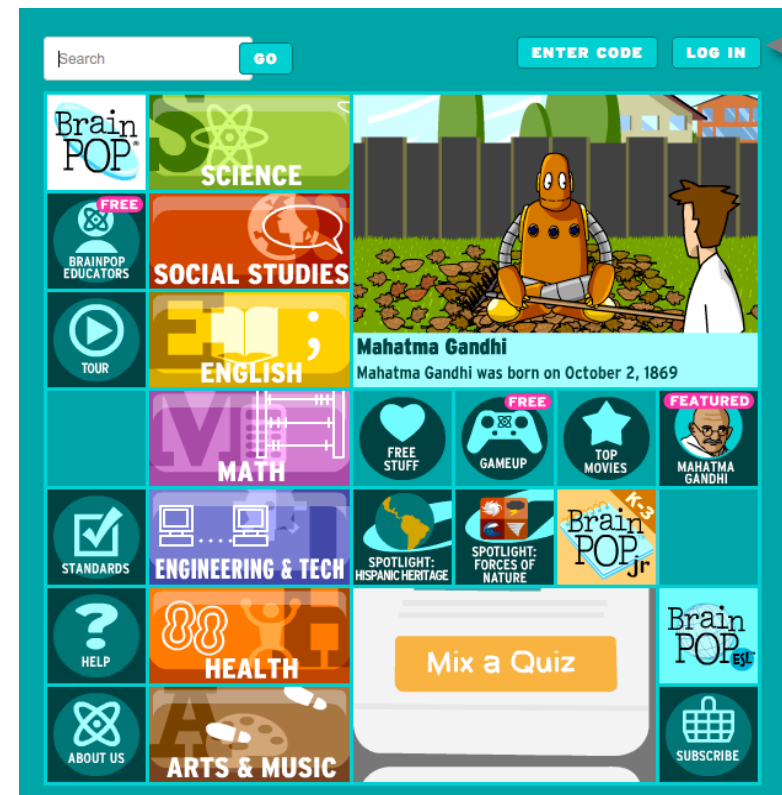
BrainPOP is a collection of short animated movies for students in grades K-12 together with quizzes, supplemental information and related materials about all sorts of educational topics.

## How do I use BrainPOP?

1. Go to <http://www.brainpop.com>
2. Click on the **LOG IN** link located on the top of the page.
3. Enter the user name and password\* for your school in the fields.



A screenshot of the BrainPOP login form. At the top, there is a search bar with a 'GO' button, and two buttons labeled 'ENTER CODE' and 'LOG IN'. Below this is a large teal box with the title 'LOG IN'. Inside this box, there are two white input fields: the first is labeled 'Username' and the second is labeled 'Password'. At the bottom of the box are two buttons: a grey 'CANCEL' button and an orange 'GO' button. A grey arrow points from the 'LOG IN' button in the main navigation bar to the 'LOG IN' title of this form.



\* Please check with your student's school if you are unsure about the user name and password.

4. Begin using this resource by clicking on any of the areas listed on the page or by searching for a specific topic.

To search for a specific topic, type in a key word you are interested in and click **GO**. A collection of resources will appear all focused on the search term you used.

