

Istation Installation for Windows

Use the following instructions to install Istation on computers that meet the Windows system requirements (to view the system requirements, visit <http://www.istation.com/support/technicalinfo>).

If there is a protection program on the computers, follow the protection program's instructions for disabling the program before installing Istation. To ensure program reliability, Istation writes encrypted data to the hard drive that must survive reboots. Programs that inhibit this operation, such as Deep Freeze or Clean Slate, must be configured to permit Istation to save data to its folder.

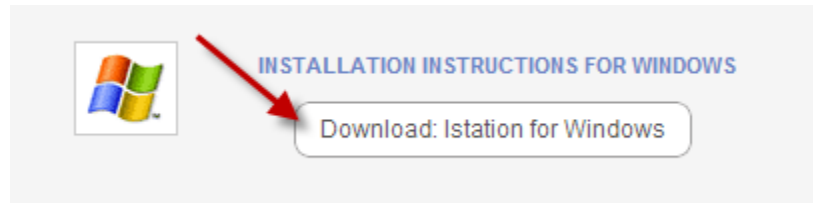
*For an msi file to batch install, please contact Istation Support Services.

NOTE: You must be logged in as an Administrator (with Administrator rights) to the computer(s) on which you are installing Istation.

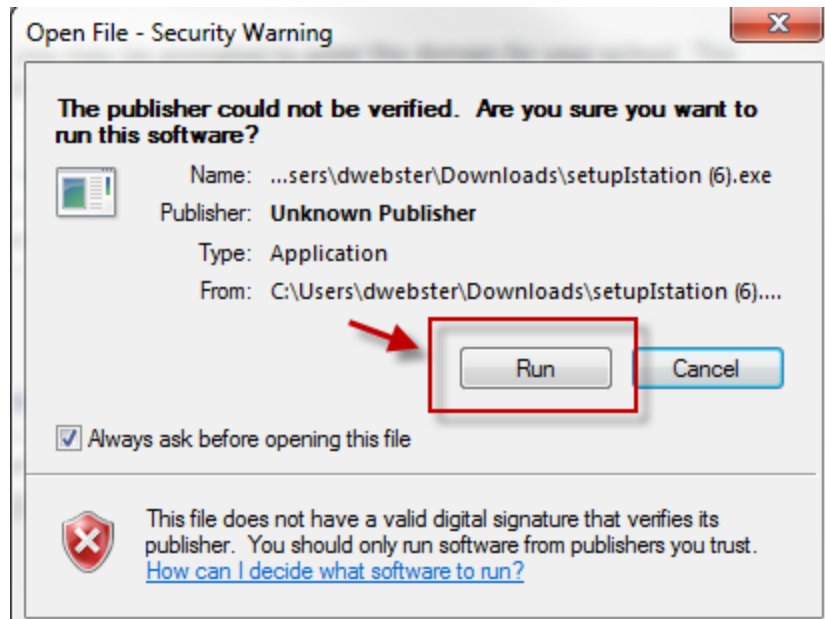
1. Go to www.istation.com.
2. Click the **Support** drop-down menu.
3. Click **Download Istation**.



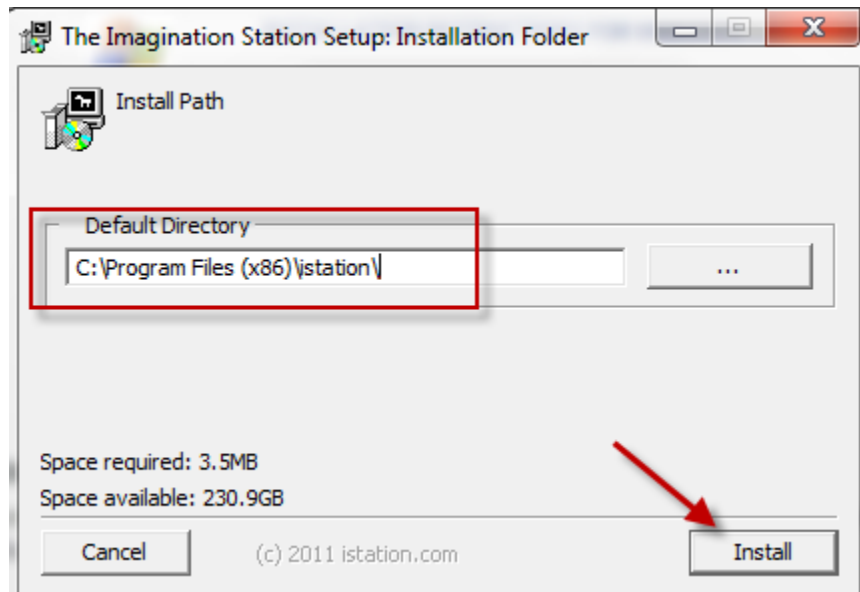
4. Click the **Download: Istation for Windows** button.



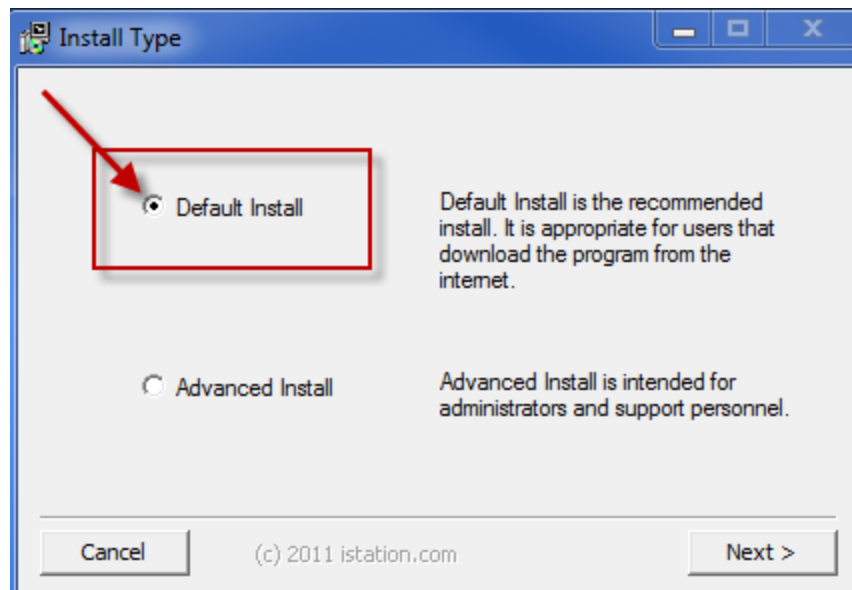
5. Click **Run** or **Open**.



6. Click **Install** to accept the Default directory.



7. Click **Next** to accept the Default installation.

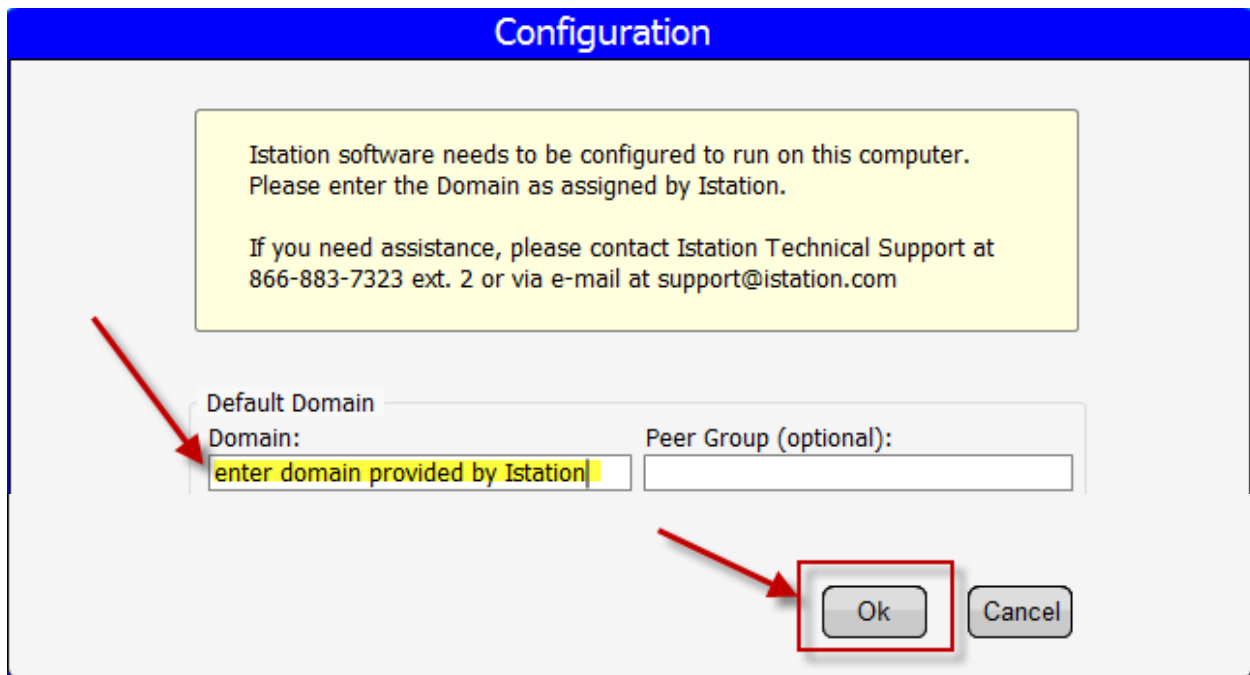


8. The program should run automatically. If not, minimize the website and click on **The Imagination Station** icon to start.

9. Type your school domain in the **Default Domain** box, if it is not automatically supplied.

NOTE: Do not type in the **Peer Group** area.

10. Click **OK**. The application will automatically restart.



11. If installing on multiple computers, leave the application running while you install other computers on the network by repeating the steps above. This will allow installations on other computers to skip step 9 and automatically configure the domain information.

Students, teachers, and administrators can now log in using this icon to access the student application. Remember, teachers and administrators will want to log in to the Istation website (www.istation.com) to manage any classes or data.

If you need help identifying the domain, contact Istation Support Services at 866-883-7323, ext. 2 from 7:30 a.m. to 6:30 p.m. (CT) Monday through Friday or email support@istation.com.