



INTRODUCTION TO YOUR PCS  
CONNECTS LAPTOP

---

# AGENDA

HOW DO I USE MY LAPTOP?



HOW DO I TAKE CARE OF MY LAPTOP?



WHAT DO I DO IF MY LAPTOP ISN'T WORKING?

# DISCUSSION

---

What are some activities you do on a computer?

How might those activities be the same or different on your PCS Connects laptop?

# HOW DO I USE MY COMPUTER?

---

- Basic computer functions
  - Turning it on/off
  - Charging the battery
  - Logging in and out
  - Checking for sound



# YOUR LAPTOP

---

Dell 3190 (or similar model)



# VISUAL GUIDE TO YOUR COMPUTER

---

<https://www.dell.com/support/article/en-us/sln313449/latitude-3190-2-in-1-visual-guide-to-your-computer?lang=en>

# PRACTICE

1. TURN ON YOUR LAPTOP

2. LOG IN WITH YOUR R2.D2 AND PASSWORD.

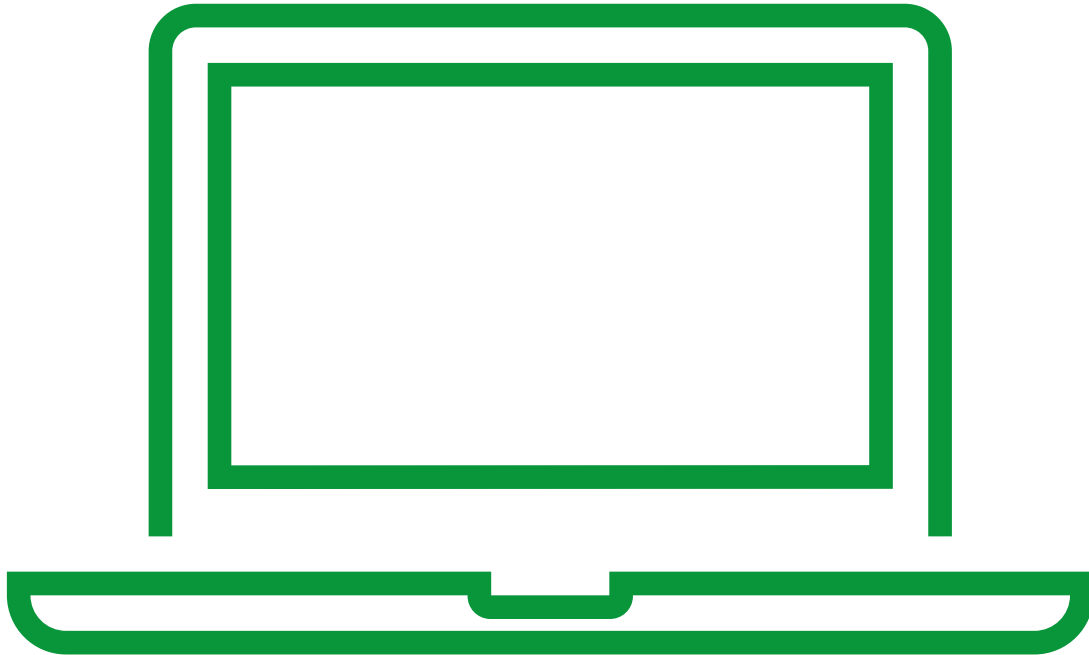
3. GO TO CLEVER AND LOG IN.

4. SHUT DOWN YOUR LAPTOP.

5. CLOSE THE LID AND PLACE IT FLAT ON YOUR DESK.

# HOW DO I TAKE CARE OF MY COMPUTER?

---



- Charge your laptop when you are not using it.
- Use your laptop away from any food or drink.
- Use your laptop for academic purposes.
- Hold your laptop with both hands when you need to move it.
- Safely store it at the end of the day.
- Keep free of any markings, stickers or decals.



# CAUTION! DO NOT...

---

- Share your school username or password
- Download any programs
- Allow others to use your laptop
- Send inappropriate messages to others
- Access inappropriate images or websites
- Leave your laptop on the floor or in a hot car.

# DISCUSSION

---

What is ONE thing you can do to keep your PCS Connects laptop SAFE at school?

# WHAT DO I DO IF MY LAPTOP ISN'T WORKING?

---

1. Alert your teacher by raising your hand.
2. Explain what you are trying to do.
3. Allow your teacher to see what you are seeing.



# OPTIONAL PRACTICE



PRETEND YOU ARE HAVING A PROBLEM WITH YOUR  
PCS CONNECTS LAPTOP.



WHAT IS THE FIRST THING YOU SHOULD DO?