

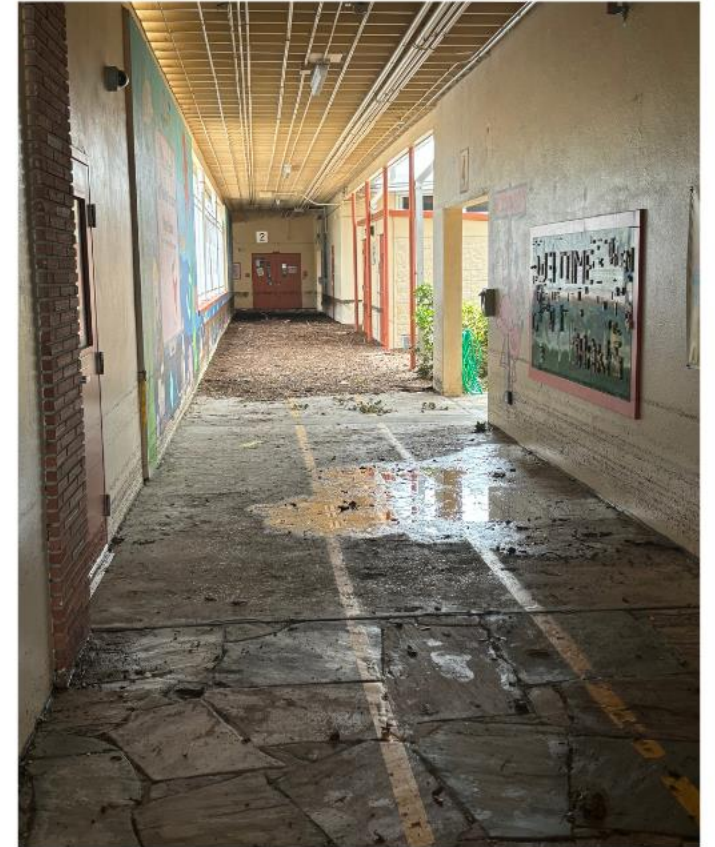


**RELOCATION PLAN DUE TO HURRICANE HELENE
FAMILY MEETING
SEPTEMBER 30, 2024**

MADEIRA BEACH SITE IMPACT



GULF BEACHES SITE IMPACT



TEMPORARY RELOCATION PLAN

TO ENSURE ALL STUDENTS CAN RETURN TO SCHOOL DURING THE WEEK OF SEPTEMBER 30

SCHOOL	TEMPORARY LOCATION	STUDENT START DATE
GULF BEACHES ES	DISSTON ACADEMY	WEDNESDAY, OCTOBER 2
DISSTON ACADEMY	LEALMAN INNOVATION ACADEMY	WEDNESDAY, OCTOBER 2
MADEIRA BEACH ELEMENTARY	WALSINGHAM/ SOUTHERN OAK	WEDNESDAY, OCTOBER 2
MADEIRA BEACH MIDDLE	OSCEOLA FUNDAMENTAL	THURSDAY, OCTOBER 3



EXPLORING ADDITIONAL OPTIONS

TO RETURN MADEIRA BEACH FUNDAMENTAL BACK TO THEIR SITE AS SOON AS POSSIBLE

- **PORTABLE 'VILLAGE' DEPLOYMENT**
- **EXPEDITED ELECTRICAL REPLACEMENT**
- **PHASED RETURN TO SITE**



MADEIRA BEACH ES HOURS

TYPE	TIME
STUDENT INSTRUCTIONAL HOURS	11:40 A.M. - 4:40 P.M.
STUDENT LUNCH	11:10 - 11:40 A.M.
STAFF HOURS	9:30 A.M. - 5:00 P.M. Instructional staff: 1 hour of planning from 9:30 - 10:30 A.M. on their own/offsite



STUDENT SUPPORTS

- **FOCUS ON WELCOMING STUDENTS AND ESTABLISHING NEW ROUTINES**
- **FLEXIBILITY FOR STUDENTS AND STAFF AS THEY ADJUST TO THE NEW CAMPUS**
- **SCHOOL SUPPLIES AND UNIFORM REPLACEMENT**
- **STUDENT SERVICES STAFF AVAILABLE FOR STUDENTS AND FAMILIES**
- **DISTRICT HEAT TEAM AVAILABLE TO SUPPORT FAMILIES THAT NEED HOUSING RESOURCES**
- **FREE LUNCH AND BREAKFAST FOR ALL STUDENTS**
- **LAPTOP REPLACEMENT FOR DEVICES DAMAGED DURING THE STORM OR LEFT AT THE SCHOOL SITE**



IMMEDIATE NEXT STEPS

TO PREPARE FOR WELCOMING STUDENTS ON WEDNESDAY, OCTOBER 2

SEPTEMBER 30

- **JOINT ADMINISTRATOR WALK-THROUGH TO SOLIDIFY SPACE PLAN, BELL SCHEDULES AND ARRIVAL/DISMISSAL PROCEDURES**
- **FAMILIES SIGN-UP FOR BEFORE/AFTER-CARE**

OCTOBER 1

- **PRINCIPAL COMMUNICATES ALL FIRST DAY LOGISTICS TO STAKEHOLDERS**



BEFORE-CARE OPTIONS

WEDNESDAY, OCTOBER 2 - FRIDAY, OCTOBER 4TH

- **BEFORE CARE AVAILABLE FROM 6:30A.M. - 11:00A.M. AT TYRONE MIDDLE SCHOOL**
- **BREAKFAST WILL BE PROVIDED**
- **PCS WILL PROVIDE TRANSPORTATION TO WALSINGHAM ELEMENTARY (K-5) AND TO OSECOLA FUNDAMENTAL HIGH SCHOOL (6-8)**



BEFORE-CARE OPTIONS

- **ST. PETE YMCA BEFORE-CARE AVAILABLE FROM 6:30-11:30 A.M. AT BARDMOOR PALMS CORPORATE CENTER BEGINNING MONDAY, OCTOBER 7**
- **FREE OF CHARGE**
- **ENROLLMENT PAPERWORK MUST BE COMPLETED (YMCA STAFF ON SITE TO ASSIST WITH ENROLLMENT)**
- **BREAKFAST WILL BE PROVIDED FOR STUDENTS**
- **PCS WILL PROVIDE TRANSPORTATION TO WALSINGHAM ES (K-5) AND TO OSECOLA FUNDAMENTAL HIGH SCHOOL (6-8)**



AFTER-CARE OPTIONS

- **R'CLUB WILL PROVIDE AFTER CARE OPTION FOR K-5 STUDENTS AT WALSINGHAM ELEMENTARY (4:40-6:00 P.M.)**
- **FREE OF CHARGE**
- **ENROLLMENT PAPERWORK WILL BE TRANSFERRED FROM YMCA TO R'CLUB IF UTILIZING BEFORE CARE**
- **R'CLUB ENROLLMENT PAPERWORK MUST BE COMPLETED IF UTILIZING ONLY AFTER CARE**



SCHOOL CHOICE OPTIONS

Pending Seat Availability:

- **Attend Zoned School**
- **Special Assignment Request**
- **Alternate District Application Program**



SCHOOL CHOICE OPTIONS- PROCESS

If you would like an alternate educational option:

- **Visit the Student Assignment Representative in attendance tonight**
- **Scan the QR code to enter your request.**
 - **Student Assignment will review your request and make the appropriate reservation**
 - **Student Assignment will reach back to you by tomorrow with the placement and follow up steps.**



SUPPORT HERE TONIGHT

STUDENT SERVICES

BEFORE- AND AFTER-CARE PROVIDERS

STUDENT ASSIGNMENT

SCHOOL LEADERSHIP

AREA SUPERINTENDENT





**RELOCATION PLAN DUE TO HURRICANE HELENE
FAMILY MEETING
SEPTEMBER 30, 2024**