

## ACT Trends

### PINELLAS

#### Reading

	2007	2008	2009	2010	2011	2012
Black	17.3	16.8	16.4	16.4	17	16.8
White	22	22	22	21.8	21.6	21.9
All Students	21.3	20.8	20.5	20.3	20.6	20.7

#### Math

	2007	2008	2009	2010	2011	2012
Black	17.1	16.7	16.3	16.2	16.6	16.5
White	21.2	21.4	21.1	20.9	21	21
All Students	21.3	20.8	20.5	20.3	20	20

#### Composite Score

	2007	2008	2009	2010	2011	2012
Black	16.7	16.3	15.8	15.7	16.2	15.9
White	21.4	21.3	21.2	21.1	21	21.2
All Students	20.7	20.3	19.8	19.7	19.9	19.9

	2007	2008	2009	2010	2011	2012
Pinellas - Black	16.7	16.3	15.8	15.7	16.2	15.9
Pinellas - White	21.4	21.3	21.2	21.1	21	21.2
Florida - Black	16.4	16.4	16.2	16.2	16.4	16.5
Florida - White	21.6	21.6	21.6	21.7	21.8	21.9
National - Black	17	16.9	16.9	16.9	17	17
National - White	22.1	22.1	22.2	22.3	22.4	22.4

## ACT Trends

### FLORIDA

#### Reading

	2007	2008	2009	2010	2011	2012
Black	16.9	16.7	16.8	16.8	17	17.4
White	22.3	22.3	22.4	22.4	22.5	22.6
All Student	20.5	20.3	20.2	20.1	20.2	20.5

#### Math

	2007	2008	2009	2010	2011	2012
Black	17	16.9	16.8	16.9	17	17.1
White	21.3	21.5	21.4	21.5	21.7	21.7
All Student	20	20	19.7	19.7	19.9	20

#### Composite Score

	2007	2008	2009	2010	2011	2012
Black	16.4	16.4	16.2	16.2	16.4	16.5
White	21.6	21.6	21.6	21.7	21.8	21.9
All Student	19.9	19.8	19.5	19.5	19.6	19.8

BLACK/WHITE GAP		2007	2008	2009	2010	2011	2012
	Pinellas	4.7	5	5.4	5.4	4.8	5.3
	Florida	5.2	5.2	5.4	5.5	5.4	5.4
	National	5.1	5.2	5.3	5.4	5.4	5.4

## ACT Trends

### NATIONAL

#### Reading

	2007	2008	2009	2010	2011	2012
Black	17.1	17	16.9	16.8	17	17.2
White	22.5	22.5	22.6	22.6	22.7	22.7
All Student	21.5	21.4	21.4	21.3	21.3	21.3

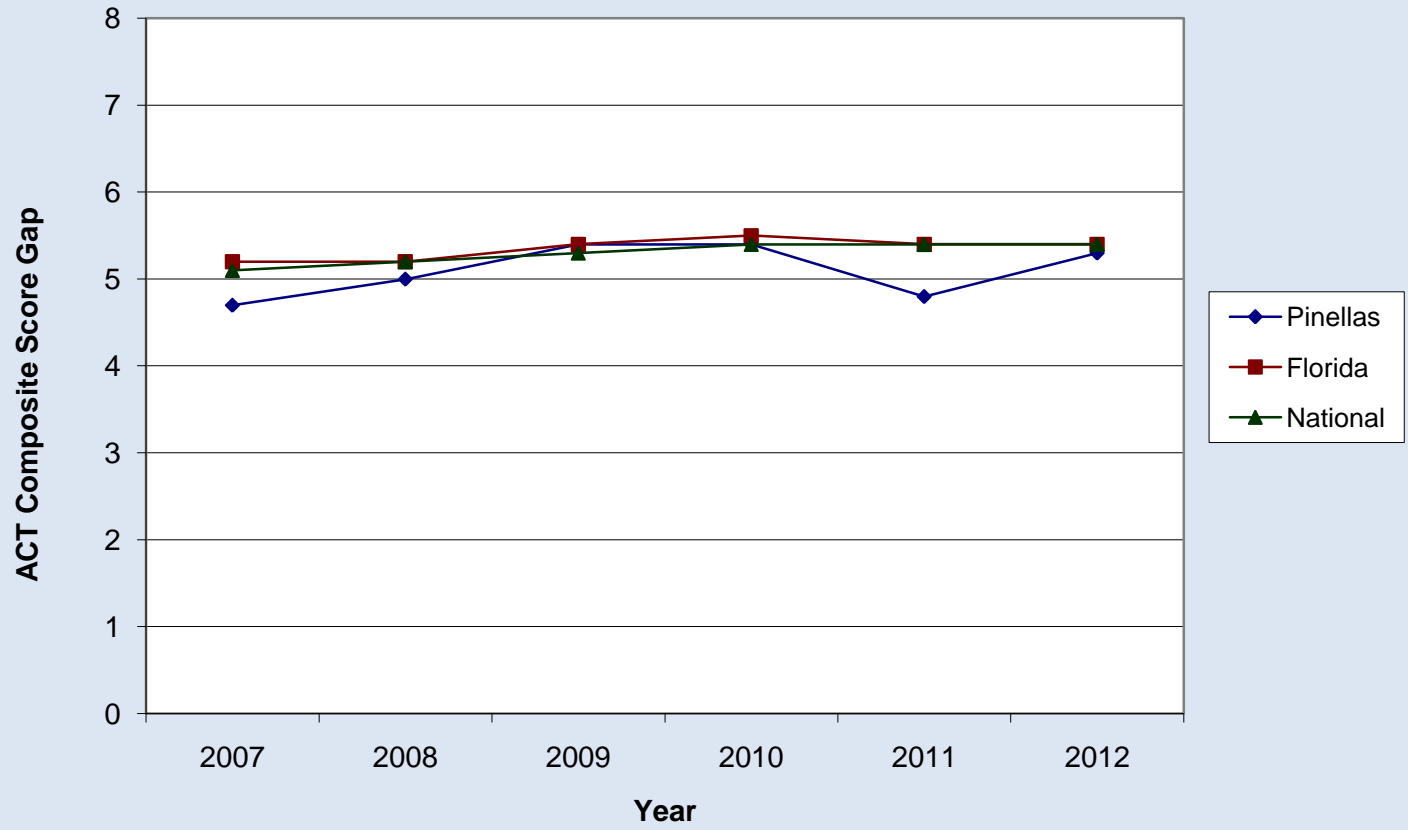
#### Math

	2007	2008	2009	2010	2011	2012
Black	17	17	16.8	17.1	17.2	17.3
White	21.7	21.8	21.4	22	22.1	22.1
All Student	21	21	21	21	21.1	21.1

#### Composite Score

	2007	2008	2009	2010	2011	2012
Black	17	16.9	16.9	16.9	17	17
White	22.1	22.1	22.2	22.3	22.4	22.4
All Student	21.2	21.1	21.1	21	21.1	21.1

### ACT Trends Achievement Gap - Black/White Students



### ACT Trends Black - White Students

