

## PINELLAS

### Critical Reading

	2007	2008	2009	2010	2011	2012
Black	428	427	432	436	430	431
White	515	514	518	524	519	518
All Students	505	502	506	511	507	508

### Math

	2007	2008	2009	2010	2011	2012
Black	417	420	425	423	425	424
White	517	521	525	526	520	522
All Students	506	507	513	512	508	511

### Combined Score

	2007	2008	2009	2010	2011	2012
Black	845	847	857	859	855	855
White	1032	1035	1043	1050	1039	1040
All Students	1011	1009	1019	1023	1015	1019

	2007	2008	2009	2010	2011	2012
Pinellas - Black	845	847	857	859	855	855
Pinellas - White	1032	1035	1043	1050	1039	1040
Florida - Black	861	861	862	864	844	853
Florida - White	1040	1046	1048	1048	1041	1045
National - Black	862	856	855	857	855	856
National - White	1061	1065	1064	1059	1063	1063

## SAT Trends

### FLORIDA

#### Critical Reading

	2007	2008	2009	2010	2011	2012
Black	434	434	434	434	423	430
White	520	522	523	523	520	522
All Student	497	496	497	496	487	492

#### Math

	2007	2008	2009	2010	2011	2012
Black	427	427	428	430	421	423
White	520	524	525	525	521	523
All Student	496	497	498	498	489	492

#### Combined Score

	2007	2008	2009	2010	2011	2012
Black	861	861	862	864	844	853
White	1040	1046	1048	1048	1041	1045
All Student	993	993	995	994	976	984

#### BLACK/W HITE GAP

	2007	2008	2009	2010	2011	2012
Pinellas	187	188	186	191	184	185
Florida	179	185	186	184	197	192
National	199	209	209	202	208	207

## SAT Trends

### NATIONAL

#### Critical Reading

	2007	2008	2009	2010	2011	2012
Black	433	430	429	429	428	428
White	527	528	528	523	528	527
All Student	502	502	501	501	497	496

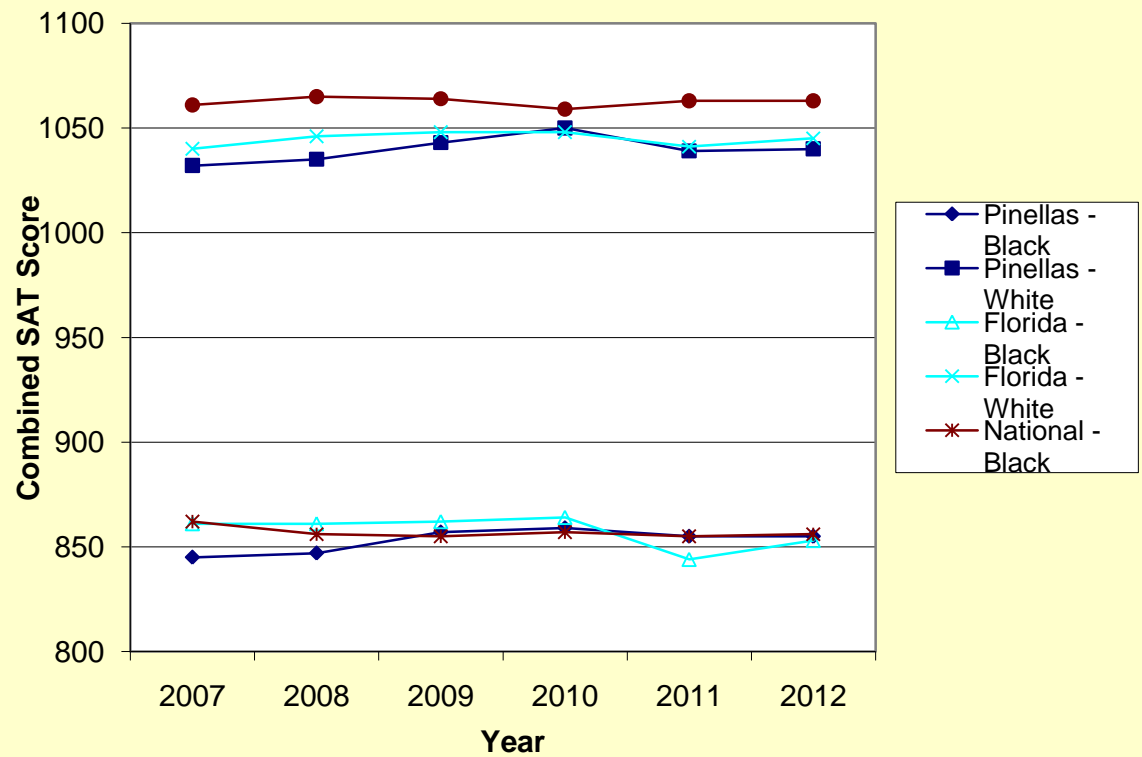
#### Math

	2007	2008	2009	2010	2011	2012
Black	429	426	426	428	427	428
White	534	537	536	536	535	536
All Student	515	515	515	516	514	514

#### Combined Score

	2007	2008	2009	2010	2011	2012
Black	862	856	855	857	855	856
White	1061	1065	1064	1059	1063	1063
All Student	1017	1017	1016	1017	1011	1010

### SAT Trends Black - White Students



### SAT Trends Achievement Gap - Black/White Students

