

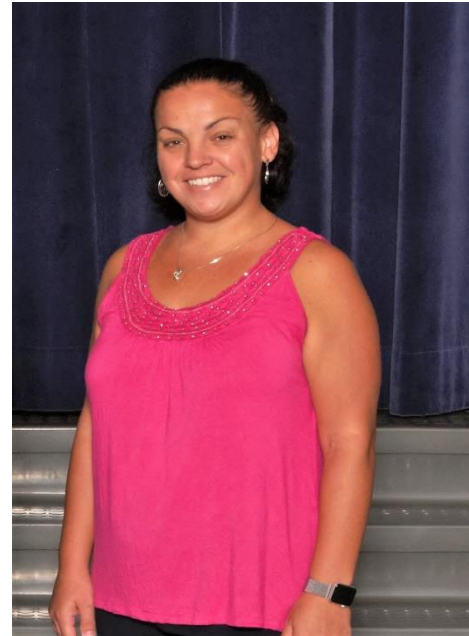
Jamerson 101

Fall 2019

Everything you wanted to know, but
didn't know who to ask!!!

Who's Who?

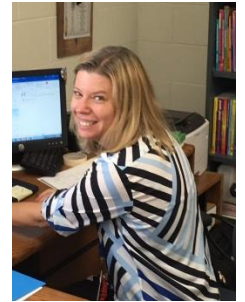
Principal: Mrs. Williams-Macon
Asst. Principal: Mrs. Blackman



Family Community
Liaison:
Cindy Parmentier



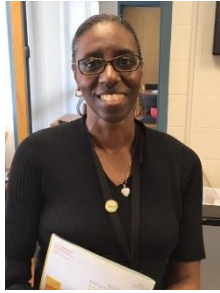
Guidance
Counselor:
Dina Flynt



Magnet
Coordinator/Engineering
Coach:
Deborah O'Hare

Front Office Staff

Jackie Jenkins



Vanessa Bell



Cindy Parmentier



Recent Awards

- ❖ 2018 PTA School of Excellence Award
- * 2017-2021 Magnet School of America- Certified Magnet School (first in Pinellas, Ridgecrest added this year)
- * 2017- Magnet Schools of America- School of Distinction and/or Excellence (last 13 years)
- * 2017- Milken Award Winner- Mr. Hefty
- * 2016- National Elementary STEM School of the Year
- * 2016-Pinellas County- Support Employee of the Year- Miss Val
- * 2016-A 5 Star School from Commissioner's Community Involvement Council
- * 2016-National PTA School of Excellence (only 2 schools in the county)
- * 2015- Florida's Engineering Educator- Ms. O'Hare

Curriculum- Engineering

- * All subjects integrated-
 - * All students, all day
- * Design Challenges
- * Family home challenges
- * Engineering Lab
- * Fab Lab- teachers sign up weekly
- * Clubs throughout the year- Coding, STEM

Name one staff member?

Specials

- * Music- weekly 40 min. class
 - * Ensembles Grades 3-5
- * Art- weekly 40 min. class,
same time as PE
- * PE- 4 days, 40 min. class
 - * Must have Dr's. Note to be
excused from PE

Homework

- * Weekly Basis
- * Review material previously taught
- * Approx. 10 min. per grade, develop independence in older grades
- * Reading 30 minutes every night
- * Sunshine Math- weekly 1 sheet (unless more is requested)

Sunshine Math

- * Enrichment- Problem Solving
- * Independent thinking with encouragement
- * One sheet weekly- teachers adjust level
- * 25 weeks
- * Earn points for rewards, activities

How many minutes are our
scholars required to read every
night?

Recess

- * 20 minutes daily, outside
- * Connected to lunch (20 min. lunch, 20 min Recess)
- * Rainy day plan

Arrival

- * Gates open at 8:15 AM, breakfast is served
- * Parents will drop child off outside of gate
- * First Bell 8:35 AM, Warning Bell 8:43 AM
- * Instruction begins 8:45 AM
- * Tardy- arrival after 8:45 AM, get a pass from the office, must be walked in to office by parent

Pick up

- * Dismissal- 2:45 PM
- * Changing method- Call the office, note in agenda
- * Car circle
 - * Stay in designated lane (left= Kindergarten, right=other)
 - * One way only
 - * Park in LEGAL parking spots only
 - * Cross in crosswalk
- * Late pick up must come into office to sign out

Absences

- * Do not need to call the school if it's just for a day
- * Email through Portal
- * Send in a note/doctor's note for excused absence
- * Trips- should notify the school, not excused absences
- * Excessive tardies/absences- Truancy Intervention Referral

What time should scholars be in
their desks ready to learn?

Early Checkout

- * Disruptive to learning, try to avoid it
- * Early checkout: not between 2:00 PM-2:45 PM
- * Only people on clinic card, must be done in person
- * Student can not be waiting in office

Contact Info

- * If you move you must log on to focus to change your address
- * Give 2 proofs of new address to front office to verify
- * Keep your clinic card up to date... we need to know how to contact you!

PBIS- Positive Behavior Intervention System

Focusing on the positive eliminates the negative

- * Schoolwide expectations
 - * Be responsible
 - * Be respectful
 - * Be safe
 - * Be your best
 - * Be kind
- * Restorative Circles/Class Meetings

PBIS

- * Get in Gear Awards- Teacher given, weekly on announcements
- * Trailblazer Assemblies- 3 times a year
 - * Entire school- students recognized for behavior- Trailblazer or problem solving- Engineer
 - * Family notified so they can attend
- * Sprockets/Learning Earnings- Earned throughout day
 - * “Purchase” from store or online store, big events, popcorn, etc.

Name one PBIS expectation?

Hint: "Be..."

PBIS- Notices

- * Daily Agenda
- * Minor Infractions- between teacher and parent
- * Major Referrals-Involving administration
- * Intervention Committee

Parent Involvement

- * Magnet agreement-partnership between families, classrooms and school
- * School Ambassadors-outreach, support, connection to the communities
- * Involvement- supporting your child, attending events, bringing in new families
- * Utilize the website and Jamerson Facebook pages

In the Classroom

- * Communicate with the teacher: email or note in agenda
- * Attend conferences
- * Observing in the classroom is only done with principal permission; limited to 30 minutes; for a specific purpose

True or False?

All Volunteers must be
registered and approved?

Volunteers

- * ALL volunteers need to be registered and approved
- * Volunteer registration form for new volunteers only (background check)
- * Inactive volunteers must log in
- * SOME volunteers need to have Level 2 clearance (fingerprinted, national background check)

Do not need level 2 if.....

- * Under the direction of a staff member
- * You are volunteering in the, office, classroom, media center, or clinic
- * Most K field trips
- * Helping out at evening events

Level 2 volunteers

You must have level 2 clearance for:

- * 5th grade Kennedy Space Center trip
- * Most field trips in grades 1-5
- * Any other time you are unsupervised with students

Level 2 volunteers

- * If you have been fingerprinted at work within the last 5 years, bring in some sort of proof. Must have expiration date
- * Go to one of the approved vendors
- * Cost is \$40.75- \$48.00 and it is good for 5 years; follows you to other schools

PTA

- * President: Ellen Williams
- * Join- \$5 per person, at least 1 membership per family
- * Fundraisers- 2 per year, Walk for Wellness, Grand Prix Race, etc.
- * T-Shirt Sales
- * Other \$: box tops, My Coke Rewards, Campbell Soup, Kelloggs, Goodshop, Goodsearch, Amazon Smile, etc.
- * Supports community outreach- clothing drives, book drives, etc.

How much is it to join the PTA?

PTA

- * Budget of over \$35,000
- * Funds school/class events
 - * extracurricular clubs
 - * field trips
 - * staff appreciation
 - * Sunshine Math events
 - * Back to School picnic
 - * All Pro Families' breakfast & end of year picnic
 - * Programs... September (Jigglyman), Snow Day, February

SAC

The purpose of a SAC (School Advisory Council) is to assist in the preparation and evaluation of the results of the school improvement plan and to assist the principal with the annual school budget. The SAC also receives special funds designated for the purpose of implementing the school improvement plan.

- * 2018-2019 SAC Officers
- * Chair – Christopher Henderson
- * Vice Chair- Tonya Smart
- * Parliamentarian – Siobhan Gorham
- * Recording Secretary – Michelle Ferrer
- * Corresponding Secretary – Kristin Ottaway

SAC

Why be a member of a SAC?

- * Great opportunity to get directly involved in improving Jamerson Elementary.
- * Excellent way to hear firsthand about the successes of the school.
- * Gain satisfaction from helping to solve some of the most important problems that the school faces.
- * Work with a small group of people whose focus is to improve the school.
- * Meets 6-8 times/year, 3rd Tuesday, 6-7:30 PM
- * Everyone is welcome to join as a voting member (must fill out form) or just attend meetings.

Food

- * Some teachers do nutritious snacks. Check with your child's teacher.
- * No Birthday Celebrations
- * Breakfast: free for all students 8:15-8:35

Lunch

- * Lunch: \$2.00 for students, unless you are on free or reduced lunch
- * Menu posted in newsletter and on website
- * www.applyforlunch.com
- * www.myschoolbucks.com

Eating with your child: Must be on the clinic card

Fridays Only

- * Meet child in cafeteria, not in classroom
- * Only lunch with your child
- * Multi-purpose room only, monitored by staff
- * You can bring food or purchase \$4-\$4.50 for guests

Stay connected!

- * Student agenda-check it and sign EVERY DAY
- * Marquee board
- * Monthly school newsletter
- * School website
- * School Facebook page
- * PTA Facebook page
- * PTA newsletter (quarterly)

Any questions?

- * Thanks for coming!
- * Complete Marketing Survey