

# Health and Safety Precautions, August 2020

## **CONTACT US AT:**

**Garrison-Jones Elem.**  
3133 Garrison Road  
Dunedin, FL 34698

**Phone**

727-469-5716

**Fax:**

727-469-5225

**Principal**

Karen Buckles

**Asst. Principal**

Erica Pollick

**We are on the web!**

[www.garrison-es.pinellas.k12.fl.us](http://www.garrison-es.pinellas.k12.fl.us)

**Like us on Facebook!**

[www.facebook.com/????????????](http://www.facebook.com/????????????)

 Centers for Disease Control and Prevention  
CDC 24/7: Saving Lives, Protecting People™

**Coronavirus Disease 2019 (COVID-19)**

It is our highest priority to provide a safe learning environment for the students and staff at Garrison-Jones Elementary. The CDC guidelines for schools will be followed to the greatest extent possible. Pinellas County Schools continue to work closely with the state and local Health Department and medical experts to monitor the situation and provide updates.

<https://www.pcsb.org/coronavirus>

Visitors and Staff are required to complete self-screening daily.




**BEFORE ENTERING** 

**COMPLETE THE SELF-SCREENING TOOL**

**DO NOT ENTER IF YOU HAVE:**

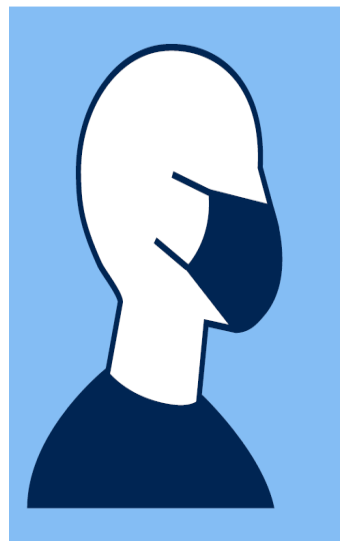
- Tested positive for COVID-19
- A COVID-19 test that is pending
- Been told by a medical professional that you likely have COVID-19
- Someone in your household with COVID-19
- Had close contact with anyone in the past 14 days who has been diagnosed with COVID-19
- Symptoms of fever, cough and/or shortness of breath





**Schoolwide:**

- Increased sanitation, day & night
- Hand sanitation stations installed throughout
- One-way directional patterns throughout campus
- Social distancing, 6' to the great extent possible
- Minimized travel on campus
- Bottle filling stations installed, water fountains disabled
- Additional signage
- Visitor restrictions



**All employees, essential contractors and registered visitors should wear face coverings/masks while in areas where they may have interactions with others and when social distancing is not possible.**



## Arrival and Dismissal

- Parents who bring their student to and from school will use the car circle for arrival and dismissal. Parents will not be permitted to park and walk students on campus.
- Pre-K parents will drop their student in the car circle to be escorted by a staff member.
- **Car riders** will be staged for dismissal 6' apart or to the greatest extent possible.
- **Bus riders** and **van riders** will be staged for dismissal in the café.
- Mrs. Poth, Mrs. Caterson, Ms. Pina, Ms. Dunn, and Mr. Toscani will be dismissed from the farthest north gate at 2:15.
- Mrs. Shaw, Sra Torres, Mrs. Muthig and Sra. Heil students will be released at 2:15 in the south car circle.
- Kindergarten students will be released at 2:30 in the north car circle.
- 1<sup>st</sup> grade students will be released at 2:30 in the south car circle.
- 2<sup>nd</sup> grade and 3<sup>rd</sup> grade students will be released at 2:50 in the north car circle.
- 4<sup>th</sup> grade and 5<sup>th</sup> grade students will be released at 2:50 in the south car circle.
- Families with multiple aged students should use the car circle during the time of dismissal for the **youngest student**.
- Parents of **students who walk home** will be stage near the sidewalk of Garrison Road. Walkers will be dismissed at 2:20.



## Cafeteria

- Seating will be 6' apart for lunch to the greatest extent possible
- Plexi-glass barriers installed
- One-way traffic patterns, one door to enter, one door to exit
- Students will be served by cafeteria attendants.
- During breakfast, "grab and go" bags will be an option
- The stage may be used for seating
- The lunch schedule may be expanded to accommodate social distancing



## Clinic

- Symptomatic students will be held in an isolated room
- Contact tracing and direction will be provided by the Health Department in collaboration with the Pinellas County Schools Health Services Department.

## Classroom Modifications

- Seating for all students will be 6' apart to the greatest extent possible.
- To maximize space, non-essential furniture has been removed
- Surfaces are cleared for frequent sanitizing
- Small group instruction occurs with limited numbers
- Student personal items will not be shared (ex; pencils, scissors, glue sticks)
- Increased hand sanitizing before and after touching common spaces or shared materials
- Hand washing techniques will be taught, re-taught and monitored as needed.



