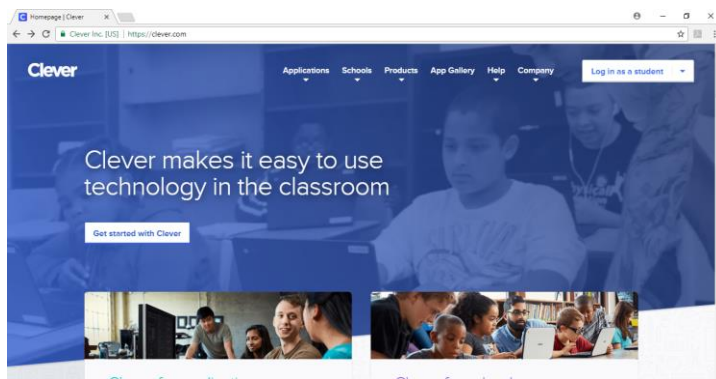


How to Access Istation and ST Math at Home using Clever

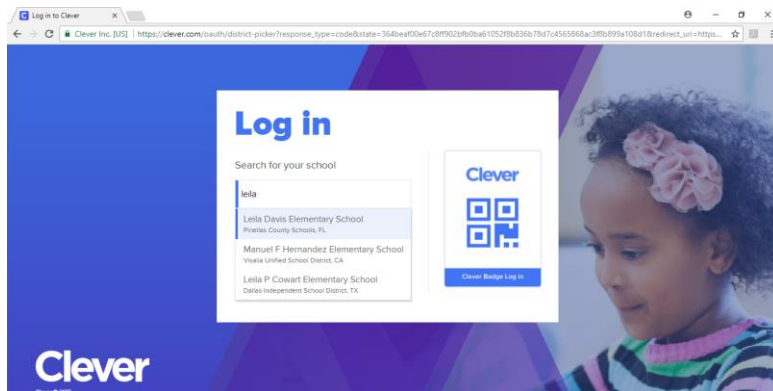
Istation on Computer

You must have the Istation program downloaded to your computer in order to open it. Istation is not a web based program and therefore requires you to download it. When you try to launch Istation if you have not downloaded the program it will prompt you to do so

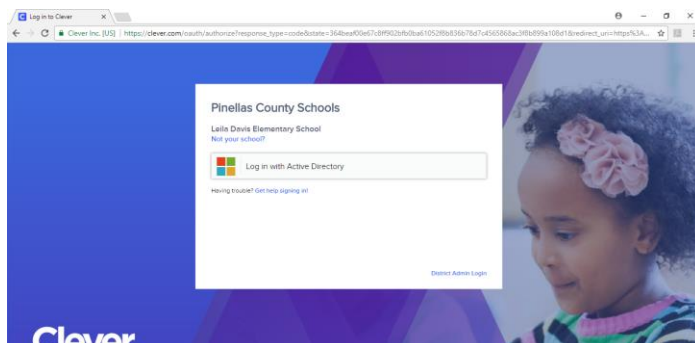
1. Open a web browser (I tested it with both Chrome and Firefox) and go to www.clever.com
2. On the top right of the screen click on 'Log in as a student'



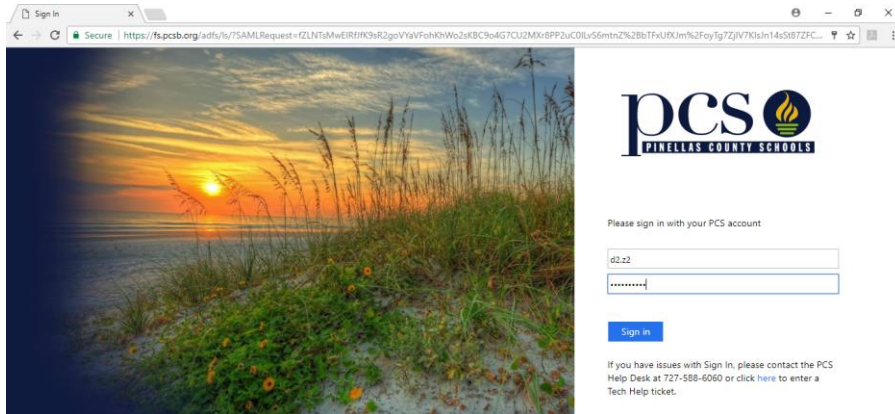
3. Start typing in Leila and you will see our school listed. Click on Leila Davis Elementary



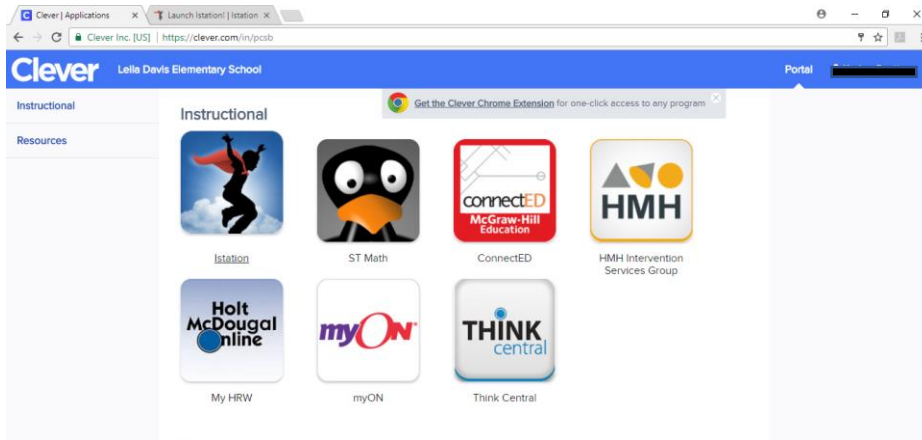
4. Click the Login with Active Directory button



5. Use your student's username and new password. (In most grade levels the new password has changed to a capital s followed by a period and student number) example S.12345678

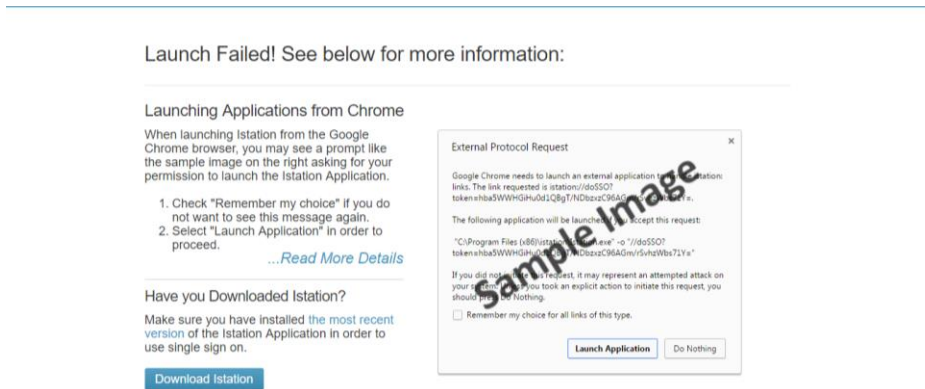


6. Once the clever portal screen has opened, you can click on the Istation program

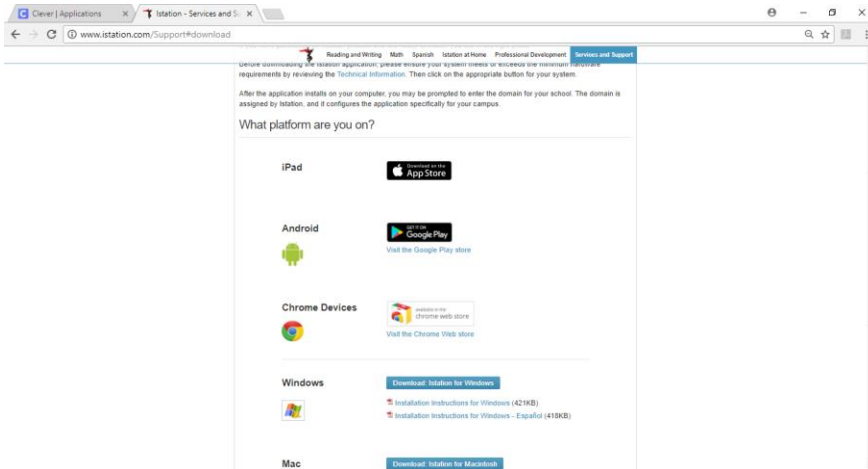


7. If your program launches skip to step number 13

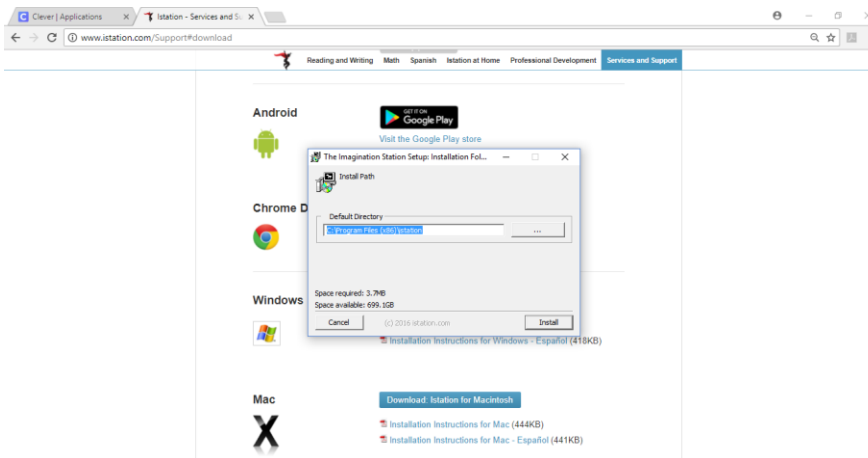
If you get a message that says "Launch Failed! See below for more information" that means that the program is not installed. Click the blue Download Istation link on the screen for more help.



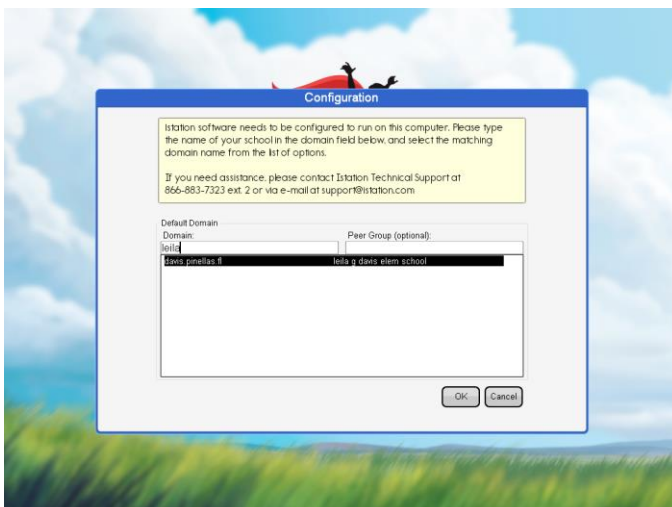
- Choose the appropriate download link. You can install through Goggle Play, Apple App Store, Windows, Mac Devices, and Chromebooks



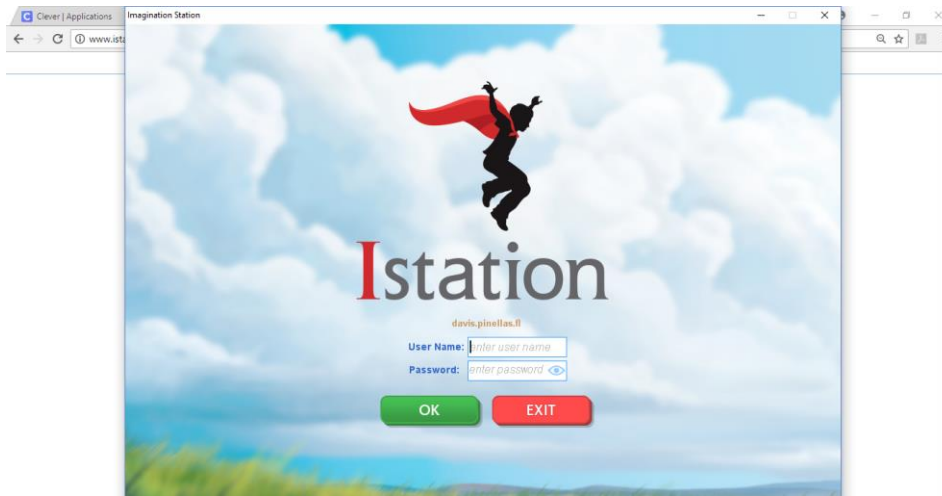
- Follow the install steps.



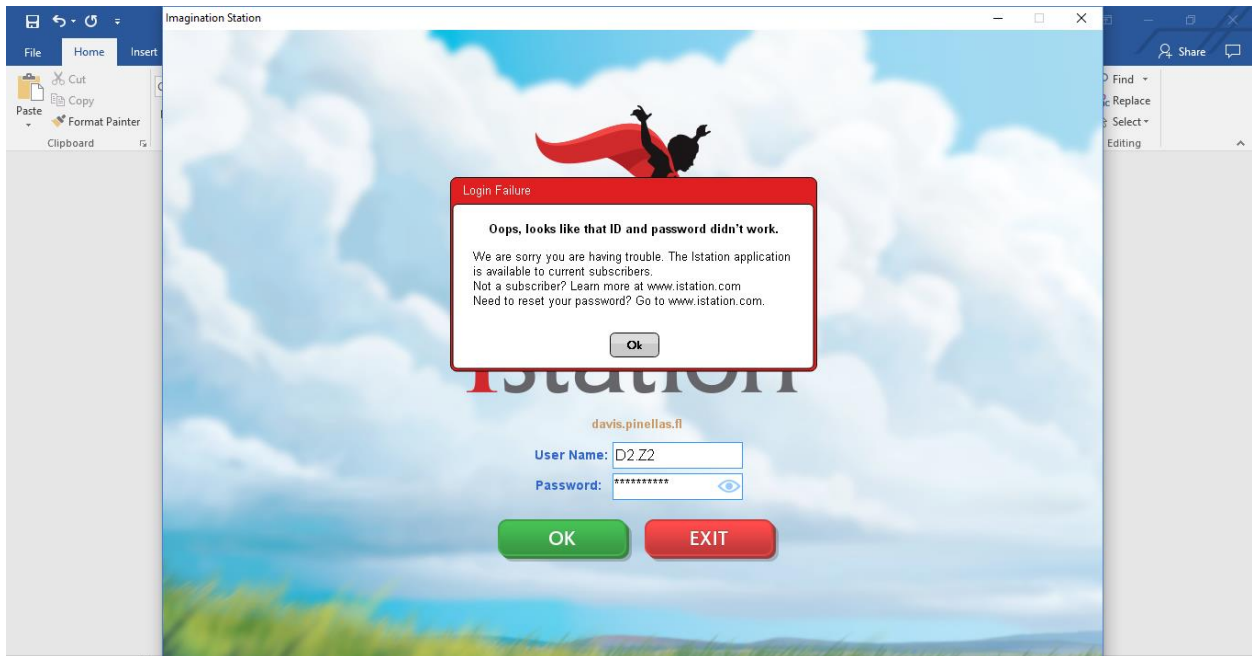
- Once installed it will launch the Istation program. You will need to associate the program to the correct domain. The easiest way to do this is to start typing leila. Click on the davis.pinellas.fl and click OK



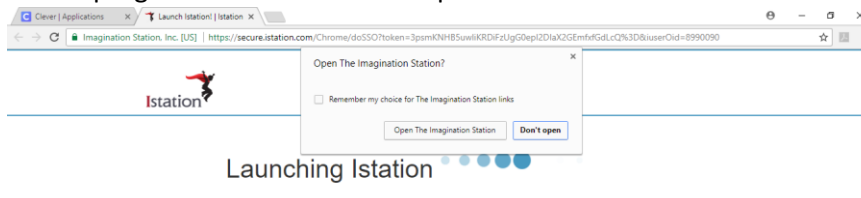
11. At the sign in screen you should see the davis.pinellas.fl domain listed in red right under the words Istation. If for some reason, the wrong domain is there type CONFIG in both the username and password boxes and click OK. This will allow you to reset your domain.



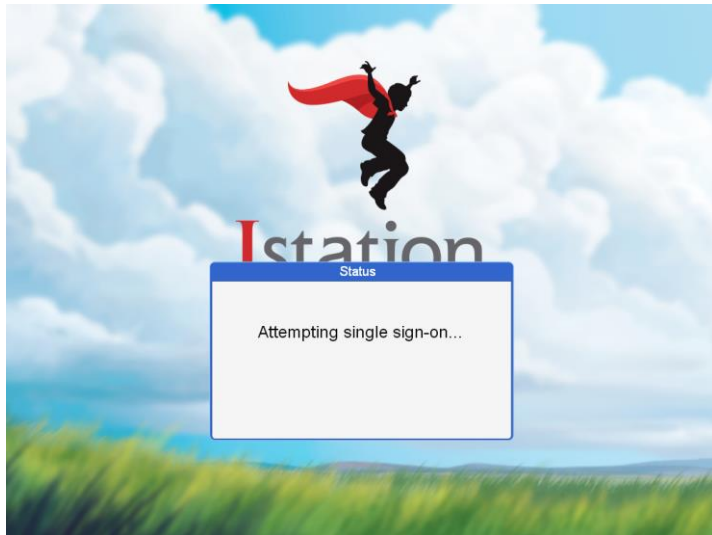
12. Once your domain name is set you CANNOT log in from this screen. You will get an error message that says “oops, looks like that ID and password didn’t work” You must go back to the clever screen and click Istation again like you did in Step 6



13. When Istation launches correctly you will get a message box that prompts you to open url, launch program etc. Follow that step and click the correct box



14. A screen will appear that says, "Attempting single sign-on..." This may take a few moments



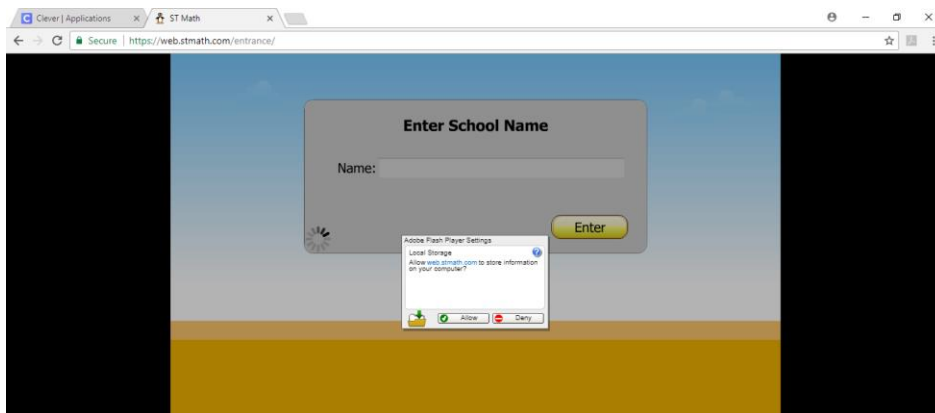
ST Math on Computer

Follow steps 1-7 above. This time click on the ST Math Icon

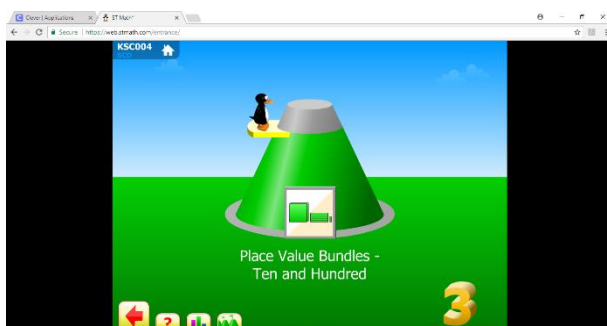
Click on Jiji the Penguin (Be sure to click on the to daytime Jiji not the one with a close up of his face)

ST Math should launch and sign in

You may have to click Allow for the Flash Player Setting



You will then be ready for ST Math at home!



Istation on iPad or Tablet

Using Istation on an iPad or Samsung tablet follows the same basic steps listed above. You must have the App already installed through the App Store. Then follow the same steps above by going to the internet and going to www.clever.com

One troubleshooting tip for an iPad or tablet is to make sure the App is up to date. I have found that on the ipads at school that I had to manually update the app to get it to launch through Clever. If all else fails try deleting the App and re-installing it.

If you try to just click on the App itself and enter username and password, it will not work. You must go through Clever.

ST Math on iPad or Tablet

Again, you must go through Clever. Make sure the App is up to date. I have noticed that the ipads at school will show a connection error message when the App was out of date. After updating the App, it launched the program through Clever