



BAY POINT ELEMENTARY
MAGNET SCHOOL

BROADCAST

September-Septiembre 2011 Volume XVI, Issue 1

Delores Milton, Principal

Barbara Hawkins, Assistant Principal

Sara DePerro, Magnet Coordinator

5800 22nd Street South, St. Petersburg, Florida 33712-5797

School Phone: 552-1449 Office Hours 8:00 AM - 3:15 PM

www.baypoint-es.pinellas.k12.fl.us



Dr. John A. Stewart, Superintendent
(727) 588-6000 * www.pcsb.org

Rita Vasquez, Asst. Superintendent Region 4
(727) 507-4493

Administrators Note

Dear Parents,

Thanks to the efforts of everybody, we are off to a great beginning. However, there are two areas we need your help with. The Magnet Commitment states students are to attend school promptly and regularly with limited absences and tardies. School starts at 8:35 A.M. This means students should be in their seats and ready for instruction. A second concern is tardies because of breakfast. The serving line will close at 8:30 A.M. Only those students arriving after that time due to a late bus will be allowed into the cafeteria for breakfast. Please help us give your child all that they deserve by getting them to school on time.

The first cycle of assessments is almost complete. Please schedule a conference with your child's teacher in the next month to review the data. We encourage you to review your child's agenda and ask them questions about school daily.

Thank you for your support,

Mrs. Delores Milton, Principal



Calendar:

Check the web for updates:

<http://www.baypoint-es.pinellas.k12.fl.us/calendar.htm>

September-Septiembre

2nd Picture Day

Casual Friday

5th Labor Day, No School

8th Guitar Club Open House, 6:30 pm

9th Grandparents Day—Come for Lunch

14th Father's Walk to School Day, 8:15 am

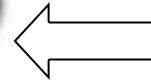
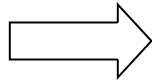
23th Pro-Ed Day No School

26th - 30th Book Fair

28th - 23th Kindergarten to Fire Station

29th PTA AstroSkate Party, 6pm

Access your student's grades, attendance record and more using your parent ("p.") PCS Portal password. See Mrs. Tucker if you have any questions.





Volunteers can log in hours from any computer by going to Portal and logging in using your volunteer ("v.") password. Ms. Petelle will assist you if you have difficulty.

Bay Point Elementary *Magnet School's mission is to promote highest student achievement in a safe learning environment by utilizing an integrated system of learning with an emphasis on math, science, technology and foreign language.

5 Star * "A" Grade * Golden School

Please Note...

- ♦ **Teacher e-mail addresses** are accessible on our web page at the Faculty link. Click their name to open.
- ♦ **Teacher web pages** may be  found on Moodle. Students must log in using their password.
- ♦ Some teachers have off-site pages which may be found by clicking the blue dot  next to their name at the Faculty link
- ♦ **Uniforms** are mandatory and are to be worn every day. Check the school website for more information.
- ♦ **The PTA sells** colorful T-shirts with the school logo. The order form may also be found at the school website.

Safety is a Priority

These measures are in place to keep your child safe. Though the staff may know you well, please help us by cooperating:

- ♦ **Present your driver's license** each time you enter the school. Registered volunteers sign the log by the computer.
- ♦ **All visitors and volunteers** are asked to wear an ID.
- ♦ **Enter the school through the office** after signing in. Do not walk through the office hall.
- ♦ **All other gates are locked** during school hours. Please exit through the front office, not the side gates.
- ♦ **Remember to sign out.**

In School,
On Time,
Every Class,
Every Day



8:35 am

Who's Who in the Office

Our administrators, the Principal, **Mrs. Delores Milton**, Assistant Principal, **Ms. Barbara Hawkins**, and Magnet Coordinator, **Ms. Sara DePerro**, are located in the main building.

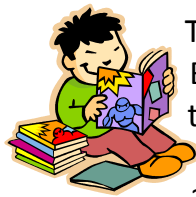
You may find it useful to get to know some of the other members of the Bay Point family who are located in the Front Office:

- ♦ **Ms. Kymerly Tetro** is the Guidance Counselor.
- ♦ **Mrs. Nancy Wohlgemuth** is the Principal's secretary/bookkeeper and the office manager.
- ♦ **Ms. Cindy Petelle** works with Ms. DePerro as Magnet Secretary, and as Family & Community Liaison. She will assist you with any questions about volunteering or donating to the school.
- ♦ **Mrs. Annie Tucker** is our Data Management Technician and she will assist you with any questions you have regarding enrollment, or your child's records.
- ♦ **Mrs. Linda Stamos**, receptionist, answers your questions when you call or come in to the office
- ♦ Teacher assistants include **Mrs. Tracy Grant**, **Ms. Kelly D'Louhy**, **Mrs. Mary Lou Smith**, **Mrs. Mitchell** and **Mrs. Eunice Morales**.

Facts at your fingertips

The district Communications Office has compiled a handy guide at:
https://www.pcsb.org/images/stories/Communications/publications/Media_Guide/media_guide_7-28-11.pdf

The Book Fair is Coming



The Scholastic Book Fair will be to Bay Point September 26–30. Each class has an assigned buying time to visit the fair. Look for the book fair flier coming home soon. It contains information about your child's buying day and how to shop at the fair. The book fair is a great opportunity to take care of your gift list—stock up now!

Label Your Child's
Personal Belongings

School Hours

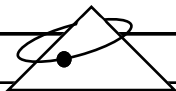
8:15 AM Gates Open
Breakfast served
8:35 AM—2:50 PM
Monday, Tuesday,
Thursday, Friday
8:35 AM—1:35 PM
Early Release, Every Wednesday
3:15 PM School Closed

Office Hours

8:00 AM—3:20 PM
Office Phone: 727-552-1449
Dial "0" for the Front Office

School Website:

www.baypoint-es.pinellas.k12.fl.us
TIP: Bookmark this page in your browser!



Guidance Corner

Ms. Kym Tetro

Responsibility

The Character Trait for the month of September is Responsibility. To be responsible means doing your best and taking ownership over your words and actions. In order to help students understand the importance of carrying out the different character traits, it is important to have discussions at home about what it means to be responsible. When you catch your child being responsible around the house, praise him or her for taking ownership for their actions. Take the time to discuss the following dinner dilemma to practice what it means to be responsible.

Dinner Dilemma

Situation: Sue is on a team that is doing a research project on water conservation. Sue feels she is doing most of the work.

Dilemma: On one hand Sue has the responsibility to make sure her team makes a good grade. On the other hand it is not Sue's responsibility to do all the work.

Discussion: What advice do you have for Sue?

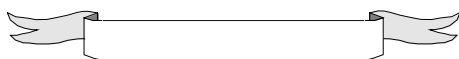
"None of us can hope to get anywhere without character, moral courage and the strength to accept responsibility." —Thomas Watson



Book Fair

September

26-30th



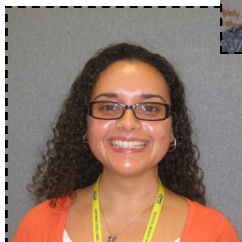
Have You Seen These New Faces On Campus?

Please join us in welcoming our new teachers:

Ms. Herens—
Kindergarten



Ms. Russo—
5th Grade



Ms. Canchani—
2nd Grade

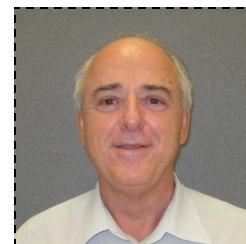
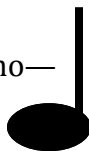


Ms. Henderson—
3rd Grade

Ms. Jessee—
Art



Ms.
DeCosmo—
Music



Mr. Andolina—
5th Grade

Problem With the Bus?

Call Transportation at 587-2020



Artwork for Education

PTA Fundraiser

Your child's art on a full color
4.5" x 6" custom greeting card!

The boxed set of 12 cards will make excellent gifts!

Contact:

Dawn Smith

dsmith3@tampabay.rr.com

Lorrie Ashley

lt2003@tampabay.rr.com

BPE 2011-2012
Parent-Teacher Association

Co-President

Mike Jefferis * Carmen Pupo

VP of Programs

Shanika Sanders * Tiffany Spoor

VP of Activities

Mari Czyszczon * Jason Grant *
Tracy Grant

VP of Membership

Janet Lusignan * Stacy McCain

VP of Fundraising

Lorrie Ashley * Dawn Smith

Treasurer

Tim Sonberg

Secretary

Lynn Guinagh

Committee Chairs

Hospitality: Kristen Cohen *
Lisa Livingston-Rice

Merchandise/Shirts: Rose
Kramer * Jen Suereth

Reflections: Kelly D'Louhy *
Jen Suereth

Web Master: Brennan Guinagh

Keep up with the latest
PTA news at:

WWW.BPEPTA.ORG



[HTTP://WWW.FACEBOOK.COM/
PAGES/BAY-POINT-ELEMENTARY-
PTA/153952011294066](http://WWW.FACEBOOK.COM/PAGES/BAY-POINT-ELEMENTARY-PTA/153952011294066)

Parent University

*Saturday, September 10th
8:00 am to 12:30 pm*

*USF St. Petersburg—Campus
Activities Center
131 6th Avenue South*

- ◆ *Child care provided*
- ◆ *Career Awareness*
- ◆ *Money for College*
- ◆ *Social and Health Services*
- ◆ *City Services—after school*
- ◆ *Pre-K*
- ◆ *Special Education Services*
- ◆ *Pinellas Virtual School*



**PTA Ice
Cream Social
Monday,
September 19th**

Ice Cream Social and
General Meeting
at 6:00 PM

*Join us for the General Meeting
and enjoy some
Ice Cream at the social!*

Donating for "Free"

Here are some ways to donate to school without it costing you a cent!

- ◆ Clip Box Tops for Education (\$300 so far this year!)
- ◆ Collect *Sweetbay School Dollars* through November
- ◆ Use these portals when you shop on-line:
www.schoolstore.com
www.btfe.com
- ◆ Designate BPE if you use a Target Red Card

**PTA
Astro-Skate
Family Night**

Sep. 29th
6:00-8:00pm

\$5 person



Welcome Back Volunteers!

...Ms. Cindy Petelle

Bay Point Elementary Magnet School has been awarded the Golden School Award and the State of Florida Five Star School Award thanks to the outstanding support of our parents!

There are many ways to contribute to the students at BPE:

- ◆ Help in classrooms—we always need reading tutors
- ◆ Take a shift at PTA events like the Fall Festival or campfire
- ◆ Share your skills at the Great American Teach-In on Nov 17th.
- ◆ Adopt a classroom or program. (Our Science Lab, Art and Music departments could use your help too)
- ◆ Contribute to classroom wish lists (boxes of tissues, etc.)