



BROADCAST

**BAY POINT ELEMENTARY
MAGNET SCHOOL**

Delores Milton, Principal
Barbara Hawkins, Assistant Principal
Sara DePerro, Magnet Coordinator
5800 22nd Street South, St. Petersburg, Florida 33712-5797
School Phone: 552-1449 Office Hours 8:00 AM - 3:15 PM
www.baypoint-es.pinellas.k12.fl.us



Dr. John A. Stewart, Superintendent
(727) 588-6000 * www.pcsb.org
Rita Vasquez, Asst. Superintendent
Region 4 (727) 507-4493

Volume *XVI*, Issue 5 * 2012

Administrator's Note

...Mrs. Delores Milton, Principal





Parents please take time to visit the BPE website. There is a slide presentation designed to help you understand the changes that have been made to the FCAT test. The link for information about FCAT 2.0 is :

<http://www.baypoint-es.pinellas.k12.fl.us/news.htm>

There is no way of getting around the fact that changing the "cut scores" will result in **what will appear** to be drops in student achievement when our students take the test this spring.

Be aware that this is simply the **appearance** of a drop in student achievement. Our students likely will perform about the same or perhaps a little better on this year's test. Simply due to the fact that students will have to earn more points to attain grade level, it may look like we are experiencing dips in achievement, but that's **not** the reality.

Our district is not alone in experiencing this change. Every district in the state is going through the same thing.

FEBRUARY * Calendar of Events * FEBRERO				
Monday-lunes	Tuesday-martes	Wednesday-miércoles	Thursday-jueves	Friday-viernes
		1	2 Groundhog Day 	3 Casual Friday 5000 Role Models
6 100th Day of School Library: Cairns, Gomillion, Wolf, White, Henderson	7 Firearm Safety: 3rd	8	9 Begin Magnet Acceptance Period MOFA: gifted	10 More Health-Bones, gr 2 MOFA: gifted
13 SAC 3:30pm PTA Bd 6:00pm	14 	15	16 End Magnet Acceptance Period	17
20 President's Day 	21	22 More Health-skin cancer, gr 4	23	24 No Classes
27	28 Florida Writes, gr 4	29 Leap Day 	<i>After School Clubs:</i> Club Olé-1 st , 3 rd Th YAC-2 nd , 4 th Tues Guitar, Beg.-Mon Guitar, Int.& Adv.-Th	<i>Next Month:</i> 6 th 100th Day 10 th Author Diane Shore 24 th No School 28 th Florida Writes

"This month's character trait is self-motivation"

PTA Reflections
...Ms. Harrington & Mrs. D'Louhy


Congratulations to these students whose projects were sent on to the state competition:

Cammie Peebles * Josh Nguyen

And to these students who also participated in the art contest:

Cory Diaz, Mary Margaret Blackett, Karlei Milbratz, Andrew Blackett, Merritt Smith, Bryson Maddox, Andrea Gómez-Rodriguez, Sarah Blackett, Jonathan Owens, Christelle Marc, Lucas Clayton and Amita Singh

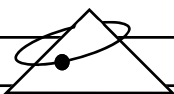
PTA CAMP BPE
AT BOYD HILL
3130 31ST ST. S.
ON SATURDAY,
FEBRUARY 4TH
5-8PM



Congratulations
Mr. Levesque
\$1725 SPLASH Grant
for outdoor classroom

*5 Star * "A" Grade * Golden School*

Bay Point Elementary Magnet School's mission is to promote highest student achievement in a safe learning environment by utilizing an integrated system of learning with an emphasis on math, science, technology and foreign language.



FLORIDA WRITES

FEBRUARY 28TH—4TH GRADE

Students in Fourth Grade will take the Florida Writes test at the end of the month. Please make sure your child arrives at school on time, well rested and having eaten a good breakfast!

BPE PTA Growing Together

...Mrs. Pupo, PTA Co-President

I don't know if you are aware of all the "little things" you do to make our school special through the PTA. In December alone, your PTA helped with the cost of the butterflies and cake for Emma Harrison's special celebration, and you helped with the Polar Express Day by providing hot chocolate, marshmallows, and bells, as well as volunteering to make the day a success. You also purchased a multipoint server to enable multiple stations to be connected to one computer in our computer lab. Finally, your PTA helped with the Winter Concert, providing phenomenal sound to hear the little angels singing. That is a lot for one month! In January we had a fun night planned at Bayside Gymnastics. You all make Bay Point Elementary a school to be proud of!

Now looking forward, the famous Camp BPE will be held on February 4th.

Don't forget Bids For Kids coming up in M a r c h . Wait until you hear about all the great things that are going to be auctioned.

You won't want to miss that event!

And if you haven't joined PTA...please do so. Be a part of a fantastic group of people who strive to make BPE the best school around!

"PTA BIDS FOR KIDS"

Silent Auction, Raffle, and Dinner
Thursday, March 8, 2012
Bay Point Elementary Cafeteria
5:30 pm – 8:00 pm

We need auction items! Contact **Lorrie Ashley** at 727-430-4893 or via email LT2003@TAMPABAY.RR.COM

Noticias Olé

...Ms. Nilsa Gómez

In January, Bay Point students celebrated *El Día de los Reyes Magos* (The Three Wise Men Day). This is a cultural experience where students will learn how Hispanic families celebrate this important Holiday as well as review the Spanish vocabulary learned so far.

The Spanish team appreciated the wrapped candy donations for this celebration that took place the first week of January .

¡Muchas Gracias y Felices Fiestas!

Magnet Acceptance Period February 9th—16th

PARENTS OF FIFTH GRADE and INCOMING KINDEGARTEN STUDENTS! If you applied to a magnet or any other program YOU MUST LOG BACK IN TO THE STUDENT RESERVATION SYSTEM (SRS) TO ACCEPT ANY INVITATIONS. Use your parent portal ID to log on at www.pcsb.org. You will lose your seat if you do not log on to accept.

Math & Science Connection

Here is an easy activity you can do at home with your child.

MATCHING GAME: Put out a pile of nuts, bolts and washers, Have him tape one of each to an index card. Then, he can sort the hardware by piling each type on its matching card. Or put a different coin (penny, nickel, dime quarter) in each cup of an empty egg carton. Give him a handful of change to sort into the correct sections.

Guidance Corner

...Ms. Tetro

The character trait for the month of February is Tolerance. Tolerance means respecting the individual differences, views, and beliefs of other people. Please take the time to utilize the dinner dilemma below with your child:

SITUATION: Sue was in her guided reading group. Everyone was taking turns reading aloud. Some in the group were slow and cautious readers.

DILEMMA: On one hand Sue became impatient for her turn. On the other hand Sue knew she should be tolerant toward all readers.

DISCUSSION: What advice do you have for Sue?

Thank You For Adopting A Class!

Jim & Lorrie Ashley
Mrs. Mclean

Rick & Dawn Smith:
Mr. Dodge
Ms. Pierson

Rex Rentals & Realty, Inc.
The Ottaviani's
Ms. Jamieson
Mrs. McLean

Beth Schwebke
Ms. Russo

When You Shop These Sites They Donate \$ to BPE!

www.schoolstore.com
www.btfe.com