

College of Education ORIENTATION / INFORMATION SESSION



ELITE EDUCATOR PROGRAM

St. Petersburg College

St. Petersburg College
Tarpon Springs Campus
600 Klosterman Rd, Tarpon
Springs, FL
727-341-4772

Become an Elite Educator with Pinellas County Schools

Our new Elite Educator Program – a partnership between St. Petersburg College and Pinellas County Schools – is changing the way teachers learn to teach. This program prepares you to teach grades K-6 and gives you an endorsement in ESOL (English to Speakers of Other Languages) and Reading. Designed for recent high school graduates, this program lets you hit the ground running by tailoring general education classes to equip you to teach a variety of subjects.



We want Pinellas County to have the best teachers in the country, and we want you to be one of them.

Are you ready? Apply today.

Dr. Michael Grego, Pinellas County Superintendent of Schools

Dr. William D. Law Jr., President St. Petersburg College

Why is this different?

- Students will be admitted in cohorts and will take all their classes together.
- Students will have a coach who will mentor and advise them throughout the whole the program.
- Students will have monthly seminars on effective teaching during the four year program.
- Students will assimilate themselves in the classroom through extensive field placements from the beginning of the program.
- General education classes will be taught by faculty who will assist future teachers in closing the gap between content attainment and delivery of content to learners.
- During the first two years, students will take, in addition to the FL mandated prerequisite teacher education courses, a series of courses designed specifically for educators. Existing teacher education programs do not offer these courses until the third and fourth year.
- Students will be better prepared in all subjects, especially math and science, to work with all students, including Exceptional Students and English Language Learners.
- Students will take courses in child and adolescent development, teaching students with exceptionalities and curriculum integration and will have opportunities to implement the strategies they learn beginning the first year.

If you successfully complete the Elementary Education degree program in four years, you will receive:

- Employment: A job with Pinellas County Schools upon completion of a PCS internship.
- Paid internship: Monetary incentives upon completion of a PCS internship.

Admission Requirements

To qualify for the Elite Educator Program you must have:

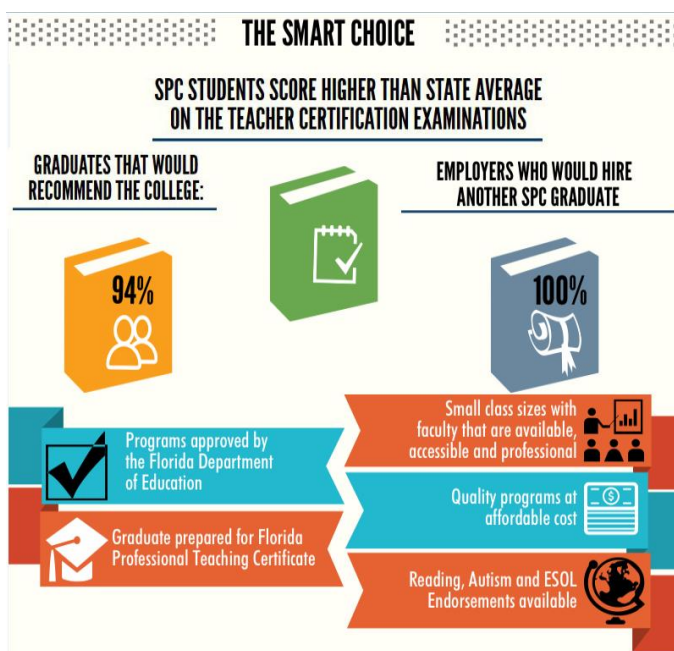
- 3.0 high school GPA unweighted
- One of the following test scores:
 - SAT – 1000 Math and Reading combined score
 - ACT – 19
 - PERT (Reading 110, Writing 110, Math 114)
- Two reference forms from teacher, guidance counselor or community leader
- A successful candidate interview
- You must also sign a pre-contract agreement

If you successfully complete the Elementary Education degree program in four years, you will receive:

- Employment: A job with Pinellas County Schools upon completion of a PCS internship.
- Paid internship: Monetary incentives upon completion of a PCS internship.

Checklist to Apply

- ☐ Complete an [SPC Application online](#) and pay the non-refundable fee.
- ☐ Call 727-712-5888 or 727-712-5410 so we can connect your application with the cohort for the Elite Educator Program
- ☐ Complete a Pinellas County Schools Reference form included in this packet.
- ☐ Complete the [New Student Orientation](#).
- ☐ Submit official, unopened (sealed) high school transcript(s) or GED transcripts.
- ☐ Complete [placement testing](#) and all college preparatory work if required.



Elite Education Program

IN THE NEWS

Published in the
Tampa Bay Times
Wednesday,
March 2, 2011



Ponce de Leon Elementary honors Pinellas teacher of the year Tracy Staley

Pinellas County 2011 Outstanding Educator Tracy Staley got a hero's welcome when she stepped from a limousine as she arrived for work Wednesday morning at Ponce de Leon Elementary in Clearwater.

Staley, a 28-year-old math and science teacher with five years on the job, was crowned Tuesday in a red carpet gala at a packed Ruth Eckerd Hall.

"I'm here today because I've been supported my entire life, but I know that's not the case for all my students," she said as she accepted the award. "That's why I want to teach. I want to be that one person who tells my students 'I love you, I know you can succeed, and I'm going to show you how to succeed.'"

Staley, a graduate of St. Petersburg College, began teaching at Sandy Lane Elementary in 2006 and moved over to Ponce De Leon a year later.

St. Petersburg College offers one of Florida's exemplary teacher preparation programs through its College of Education. If you love learning and want to share your passion for helping students discover their potential, consider SPC's College of Education:

- Programs approved by the Florida Department of Education
- Quality programs at affordable cost
- Graduate with Florida teacher's certificate
- Curriculum qualifies you to teach English to Speakers of Other Languages (ESOL)
- Small class sizes with faculty that are available, accessible and professional
- Employing districts rate SPC graduates' performances as "outstanding"

Katelyn Pilsbury, Florida's Exceptional Student Education 2013 Rookie Teacher of the Year



Katelyn Pilsbury is a full-time Autistic Spectrum Disorder kindergarten teacher at Plumb Elementary School in Clearwater.

"I learned so much in my final internship," Pilsbury said. "That was when I really knew I was ready to be a teacher and have my own class."

All College of Education students at SPC are given extensive experience in public schools including diverse placements in elementary, middle and high schools. The role veteran educators play in coming alongside new teachers like Pilsbury is priceless.

Elite Educator Program – St Petersburg College

B.S. Elementary Education

Reference Form:

Student Name _____

Reference Name _____

Reference Phone number or Email _____

In what capacity have you known the applicant? _____

How long have you known the applicant? _____

Please rate the applicant on the following characteristics: 5 (high), 1 (low)						
TRAIT	5	4	3	2	1	NOT OBSERVED
Cooperative						
Mature						
Respectful						
Positive						
Dependable						
Self-Starter						

Additional Comments: _____

Signature

Title

Date

\$\$ SCHOLARSHIPS \$\$

T.E.A.C.H. scholarship

The program provides scholarships for early care educators and center directors to work towards earning an Associate's degree or credentials in early childhood education. It is funded by the Agency for Workforce Innovation Office of Early Learning and involves a three-way partnership for the sharing of expenses by the caregiver receiving the scholarship, the sponsoring child care center or family child care home and T.E.A.C.H.

STEP UP Scholarship

STEP UP Scholarships are available to all Early Childhood professionals in Pinellas County who are interested in pursuing an Associate's degree in Early Childhood Education at St. Petersburg College. Since its inception in 2006, the STEP UP Scholarship program has assisted over 300 Early Childhood professionals to attend early childhood courses at St. Petersburg College.

Autism Spectrum Disorders Endorsement Support Program

Provides up to \$1200 per course for tuition support through annual funding from the State Personnel Development Grant, Florida Department of Education, Bureau of Exceptional Education and Student Services under the Individuals with Disabilities Education Act, Part D.

Florida Fund for Minority Teachers

Offers a \$4000 scholarship to full-time students. Scholars are selected on the basis of qualities that would indicate their potential to become good teachers.

Accreditation Assistance Program from the ELC of Pinellas

The program is funded by Juvenile Welfare Board and assists centers located in targeted areas of St. Petersburg and Clearwater with limited access to accredited child care programs. This exciting project will assist centers through the NAEYC accreditation process.

Centers of Excellence in Elementary Teacher Preparation

This funding will cover 2 courses per year for up to 100 students. This scholarship will be available FALL 2015.



For more information:
Please call Pam Wilkins
727-712-5888 or 727-712-5410
or visit us on the web at spcollege.edu/elite