




March 20, 2012

PROPOSED

ORGANIZATIONAL CHART

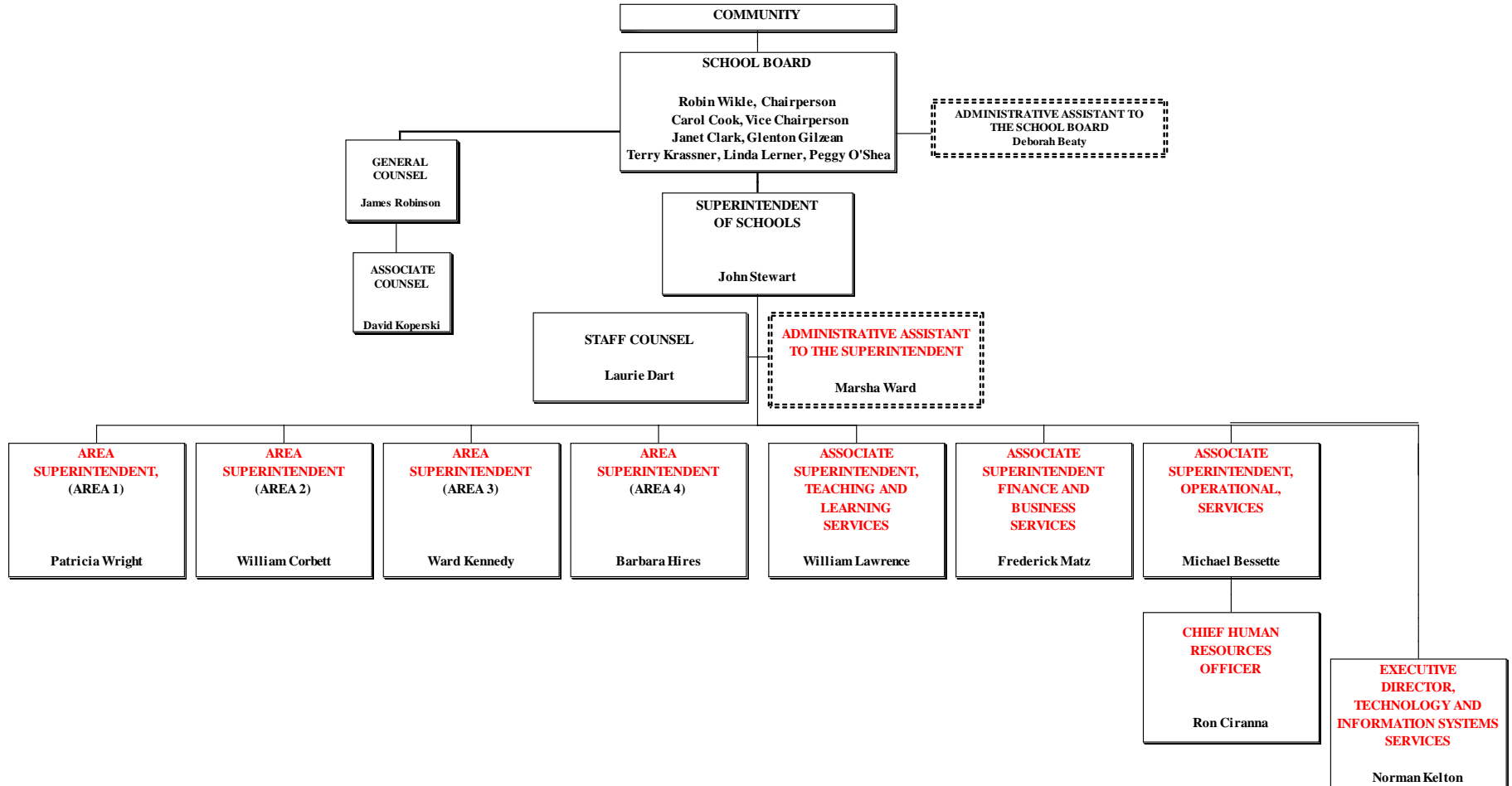
(Exempt Salaried Employees)

 SOLID Boxes indicate Administrators

 Dashed Boxes indicate P/T/S

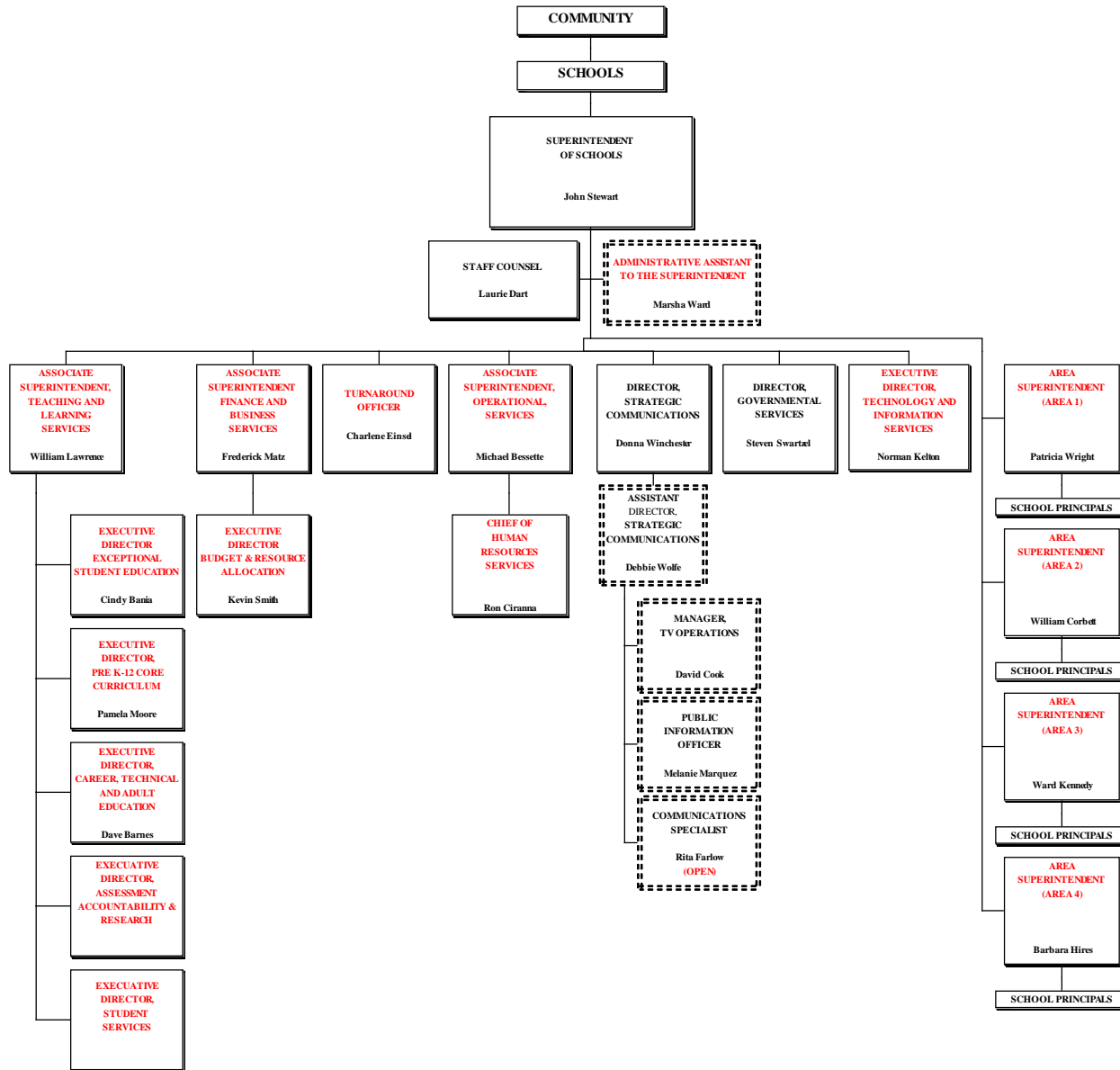
ORGANIZATIONAL STRUCTURE OF PINELLAS COUNTY SCHOOLS 2012-13

PROPOSED - Recommendation

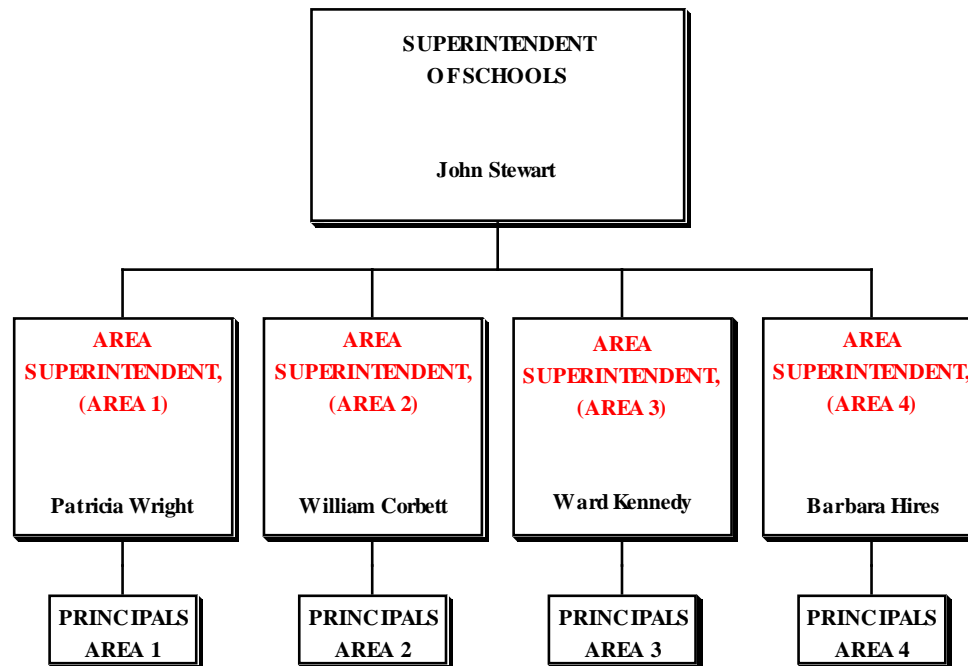


SUPERINTENDENT OF SCHOOLS

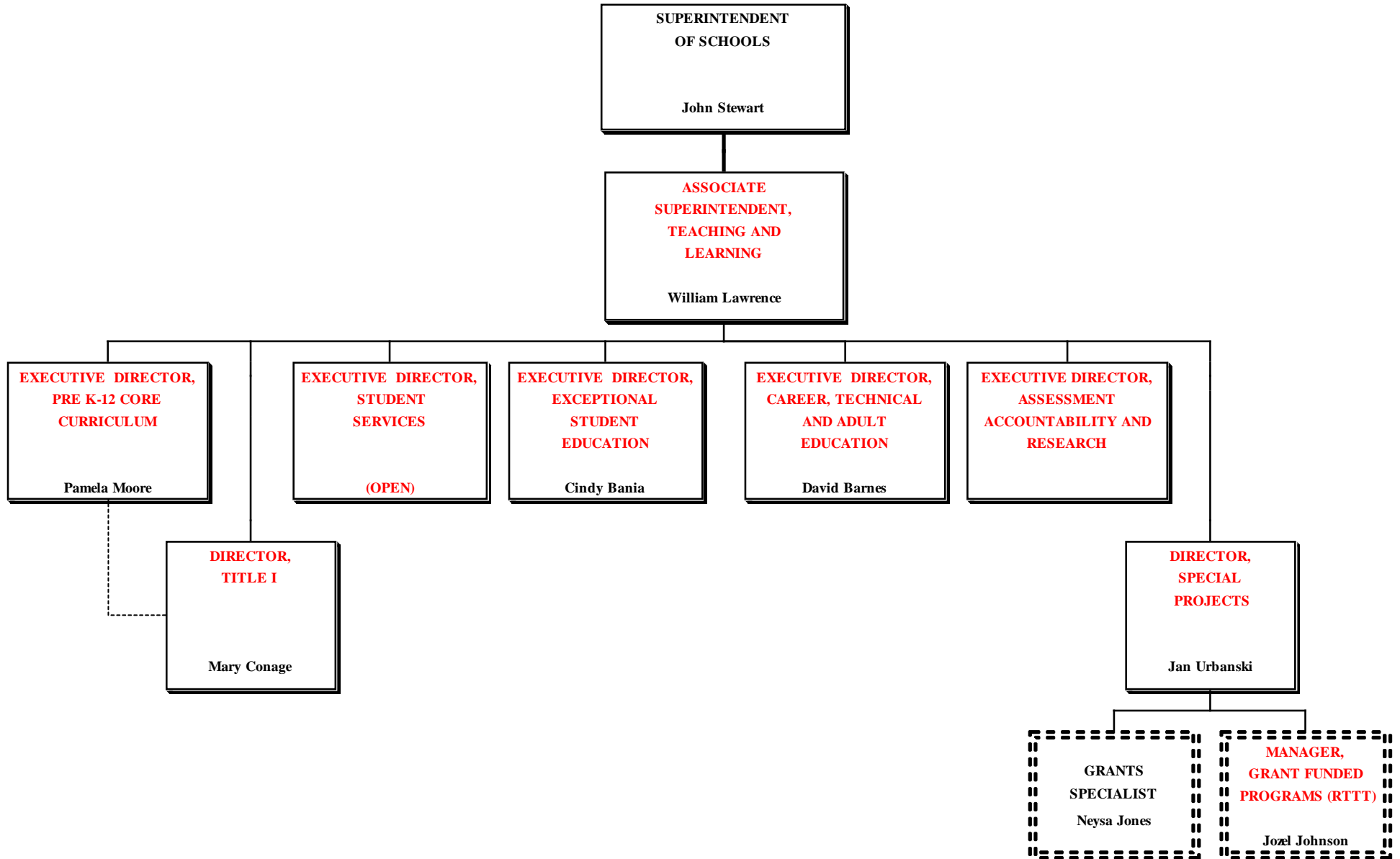
PROPOSED - Recommendation



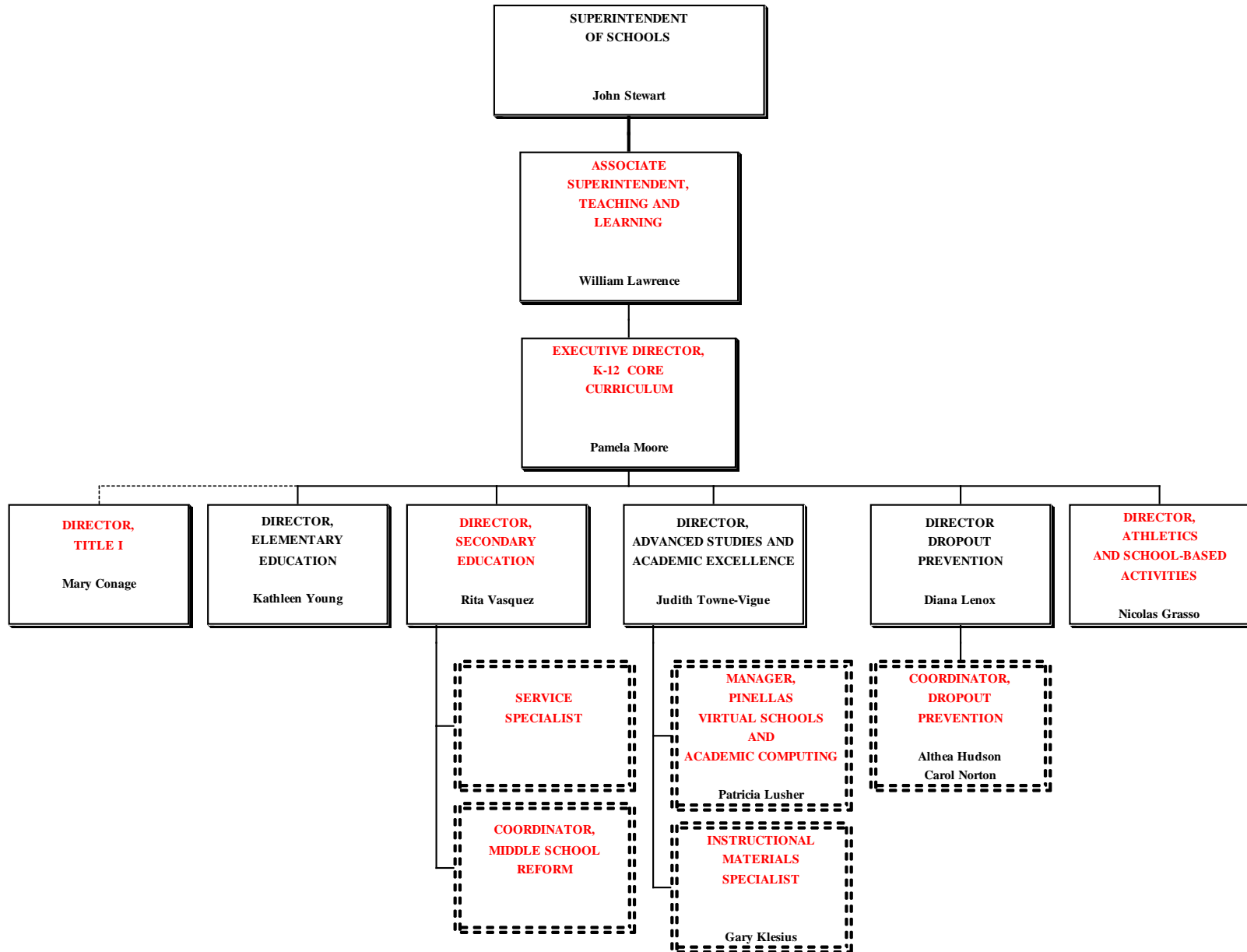
AREA SUPERINTENDENT PROPOSED - Recommendation



ASSOCIATE SUPERINTENDENT, TEACHING AND LEARNING PROPOSED - Recommendation

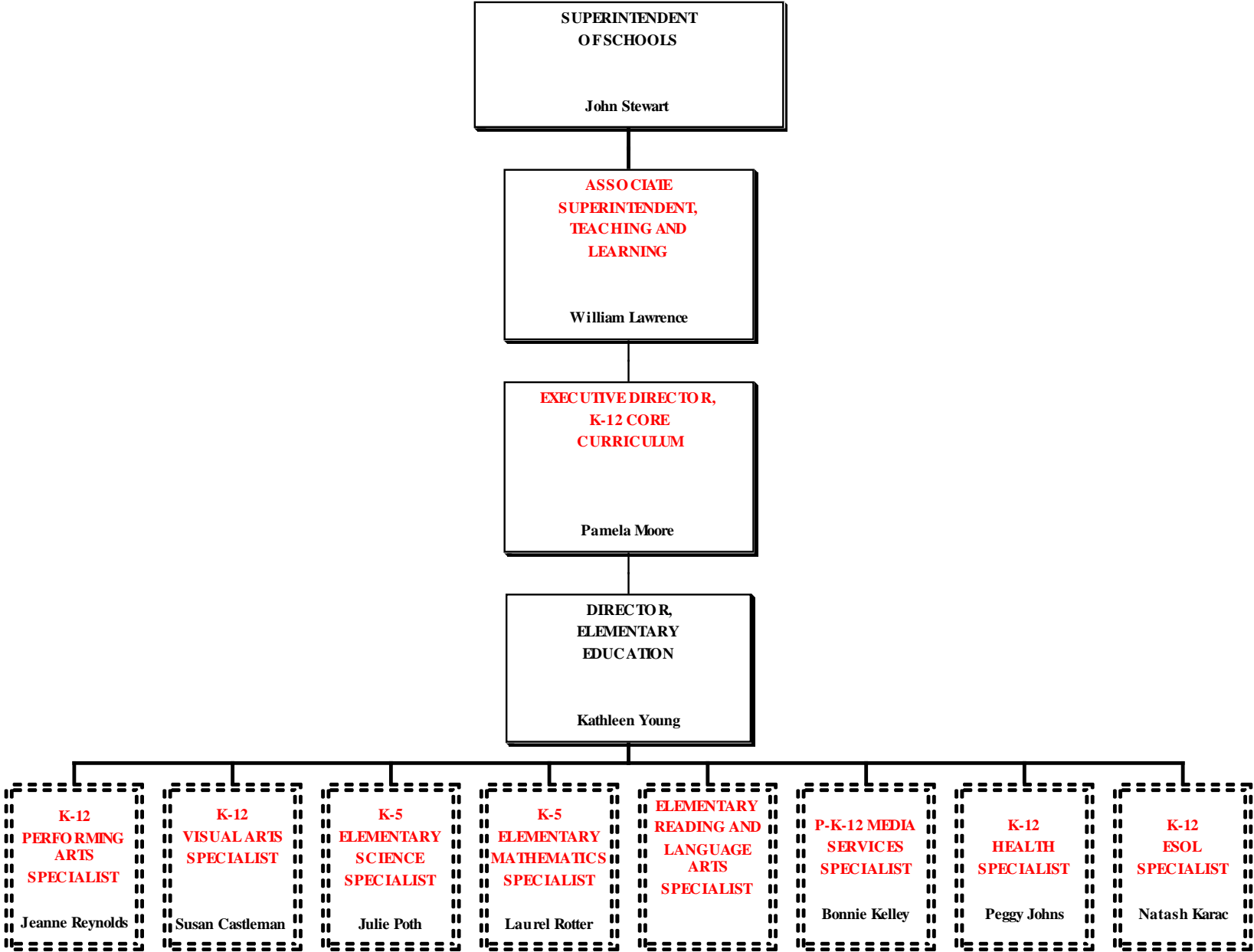


ASSISTANT SUPERINTENDENT, K-12 CORE CURRICULUM PROPOSED - Recommendation

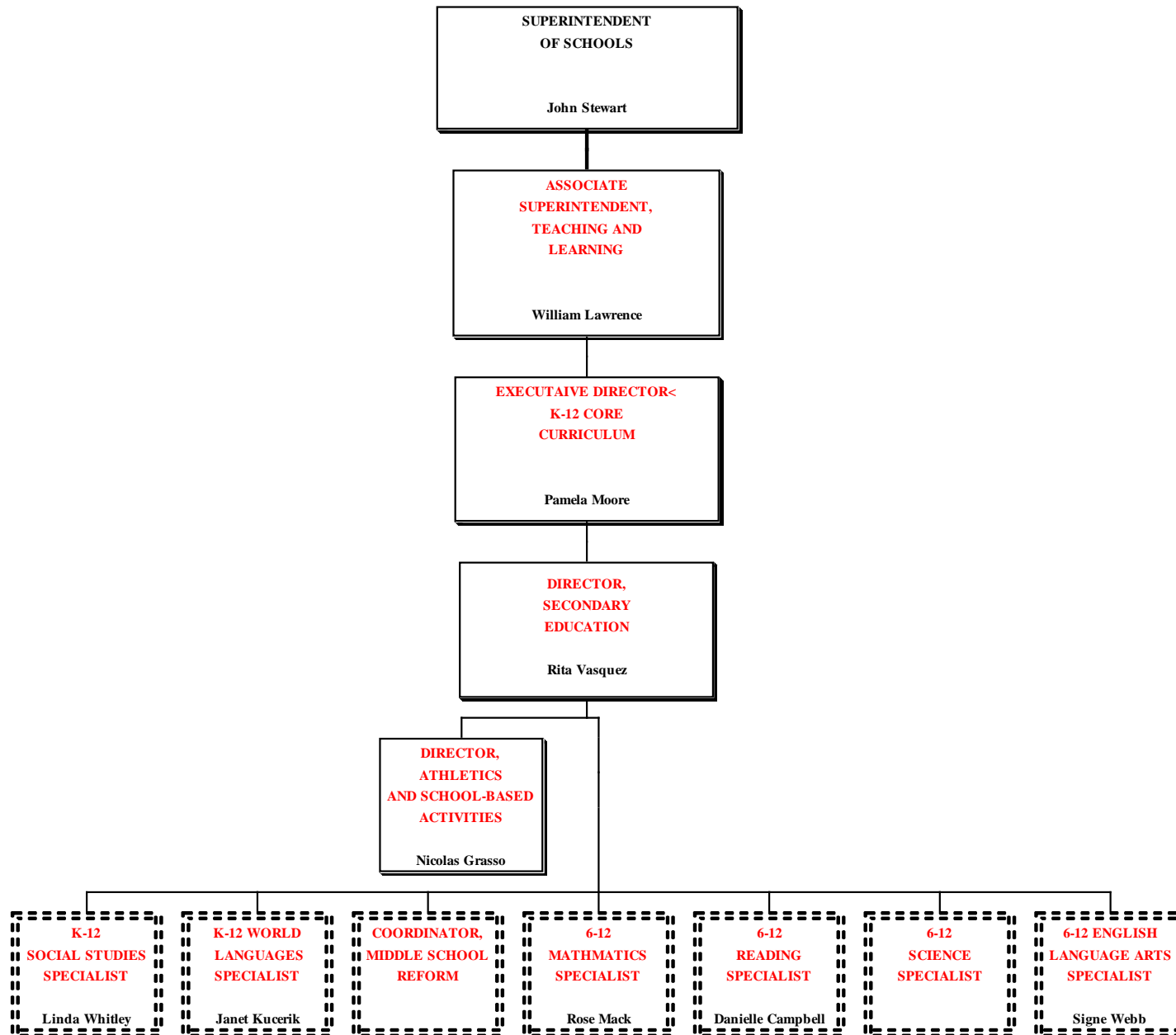


DIRECTOR, ELEMENTARY EDUCATION

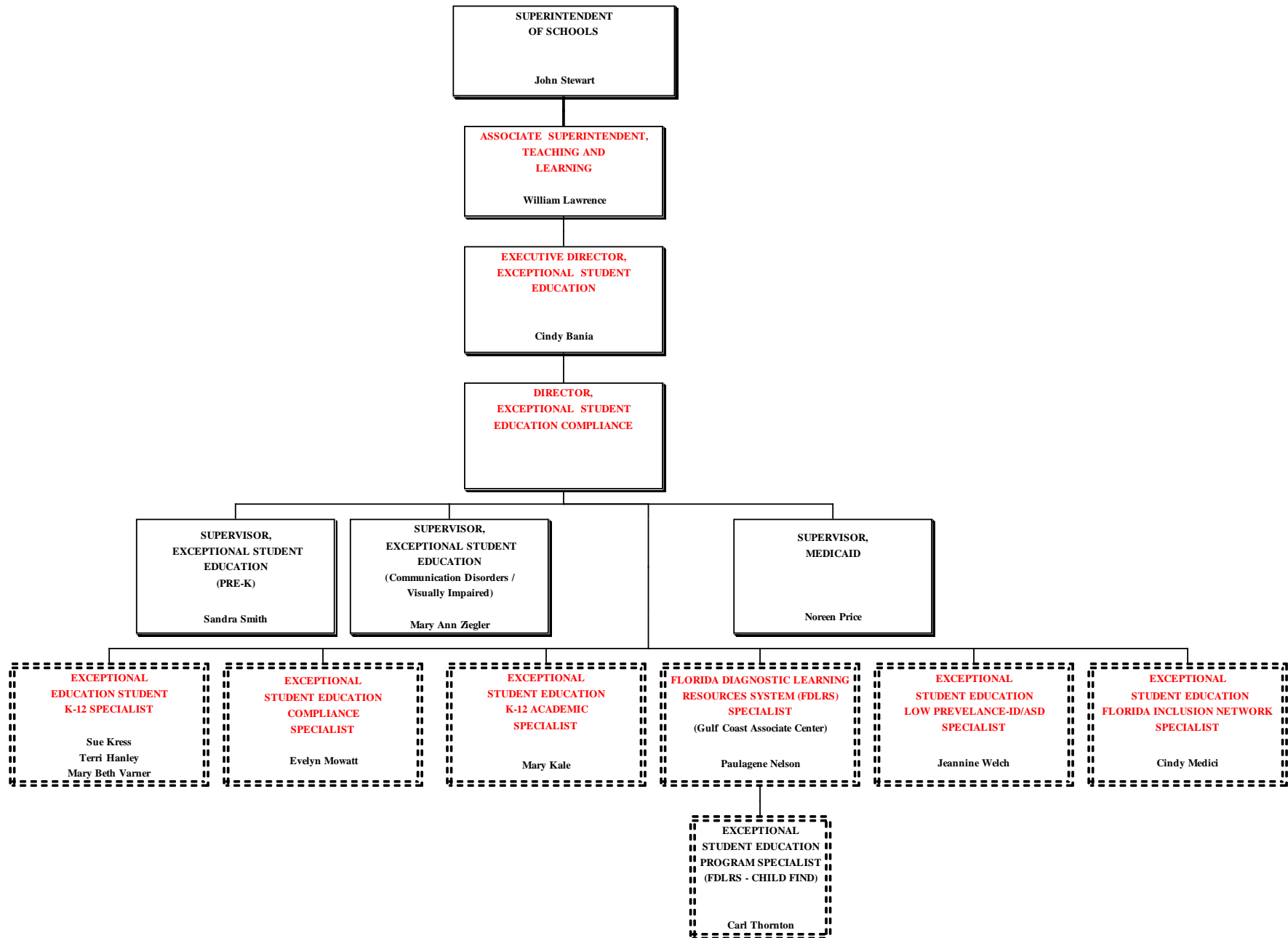
PROPOSED - Recommendation



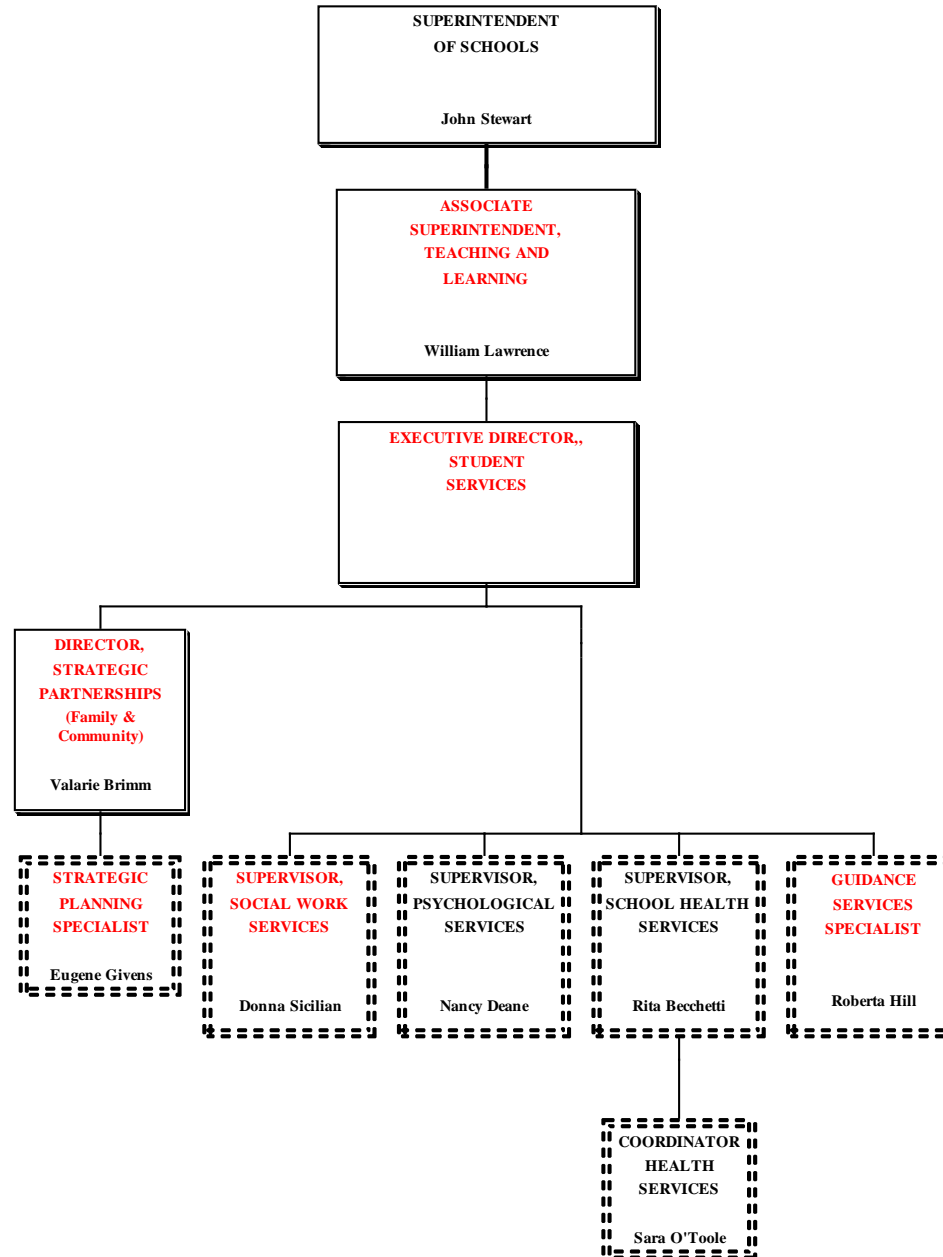
DIRECTOR, SECONDARY EDUCATION PROPOSED - Recommendation



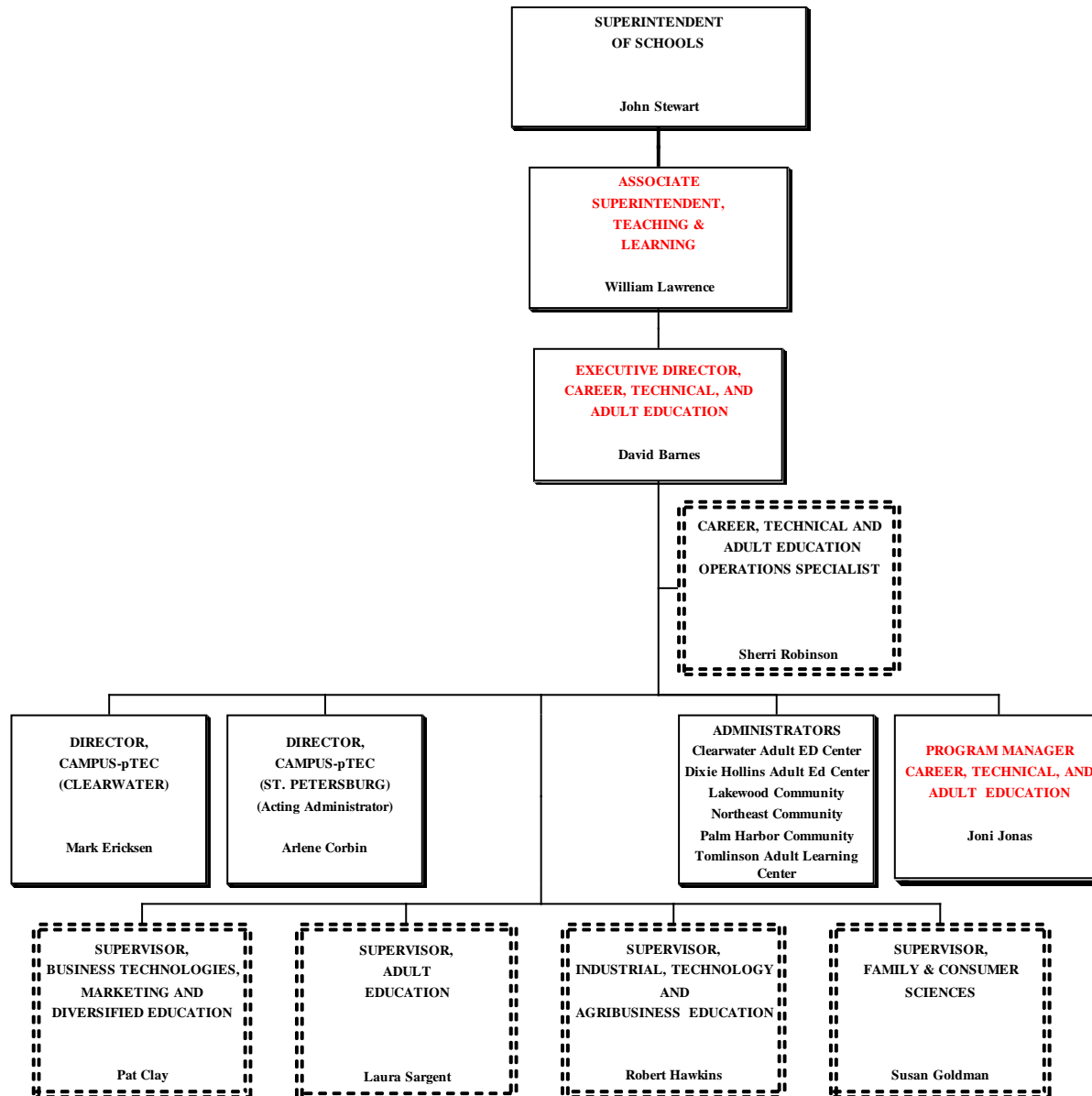
EXECUTIVE DIRECTOR, EXCEPTIONAL STUDENT EDUCATION PROPOSED - Recommendation



EXECUTIVE DIRECTOR, STUDENT SERVICES PROPOSED - Recommendation



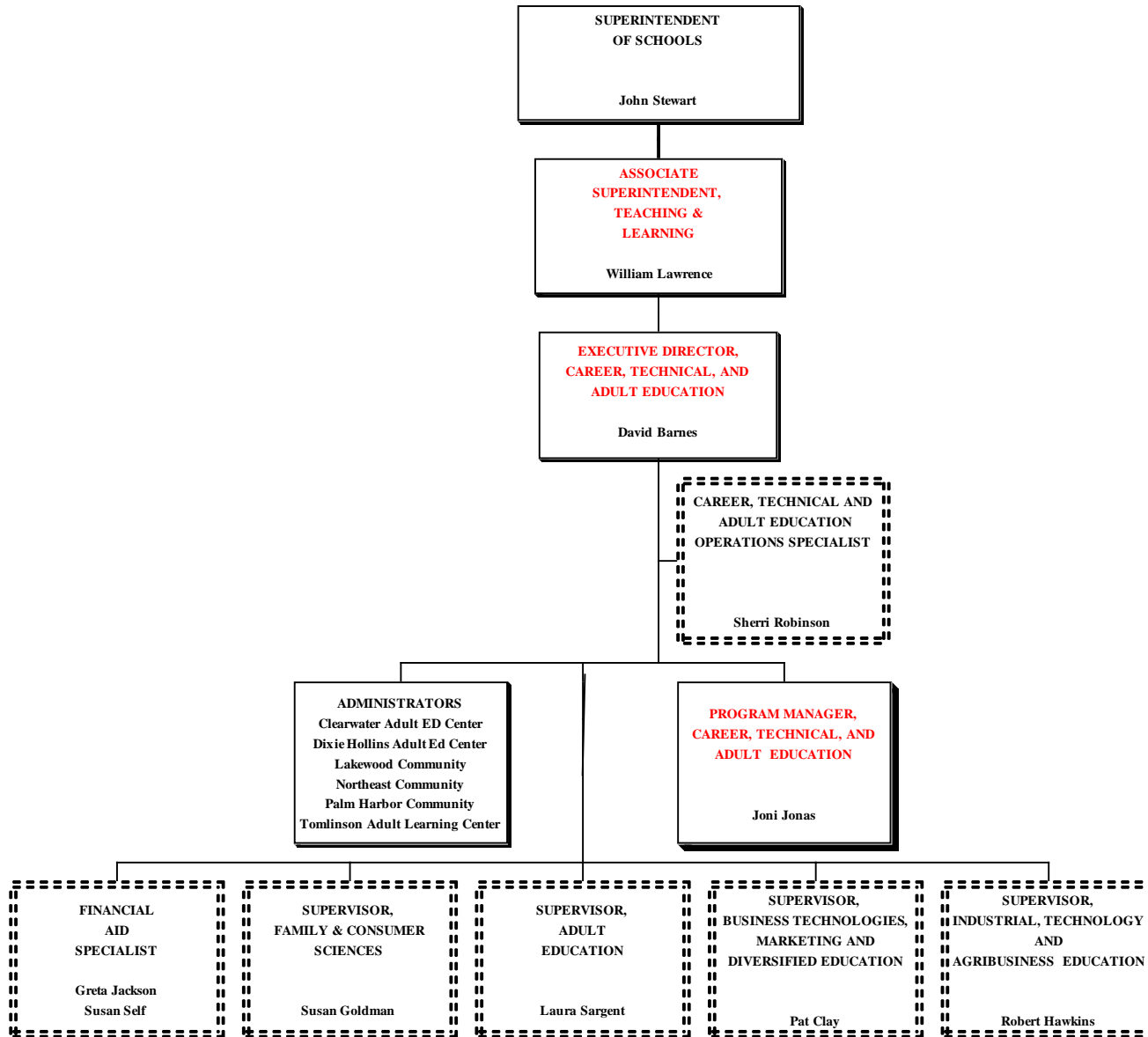
EXECUTIVE DIRECTOR, CAREER, TECHNICAL AND ADULT EDUCATION PROPOSED - Recommendation



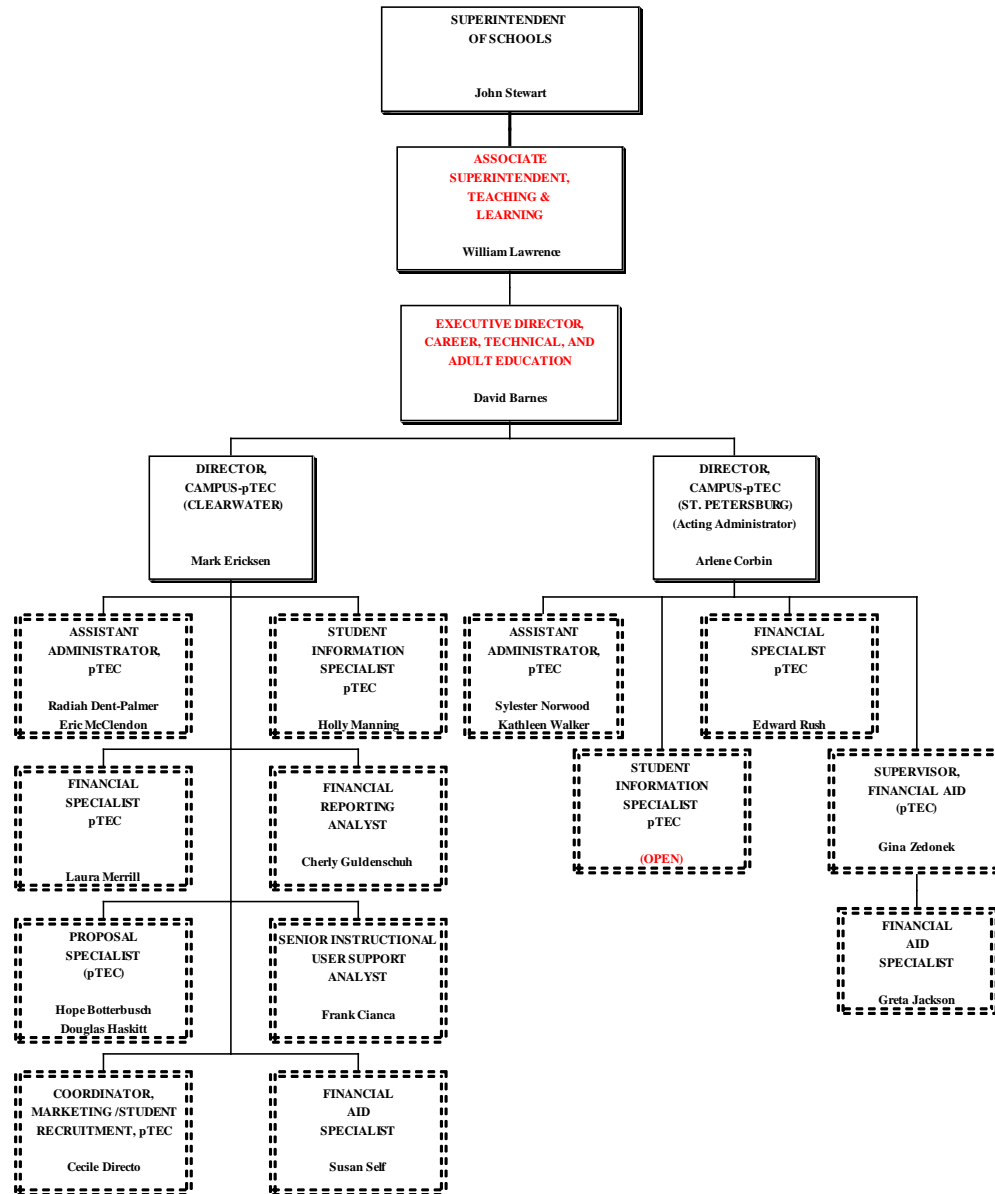
EXECUTIVE DIRECTOR, CAREER, TECHNICAL AND ADULT EDUCATION

CTAE

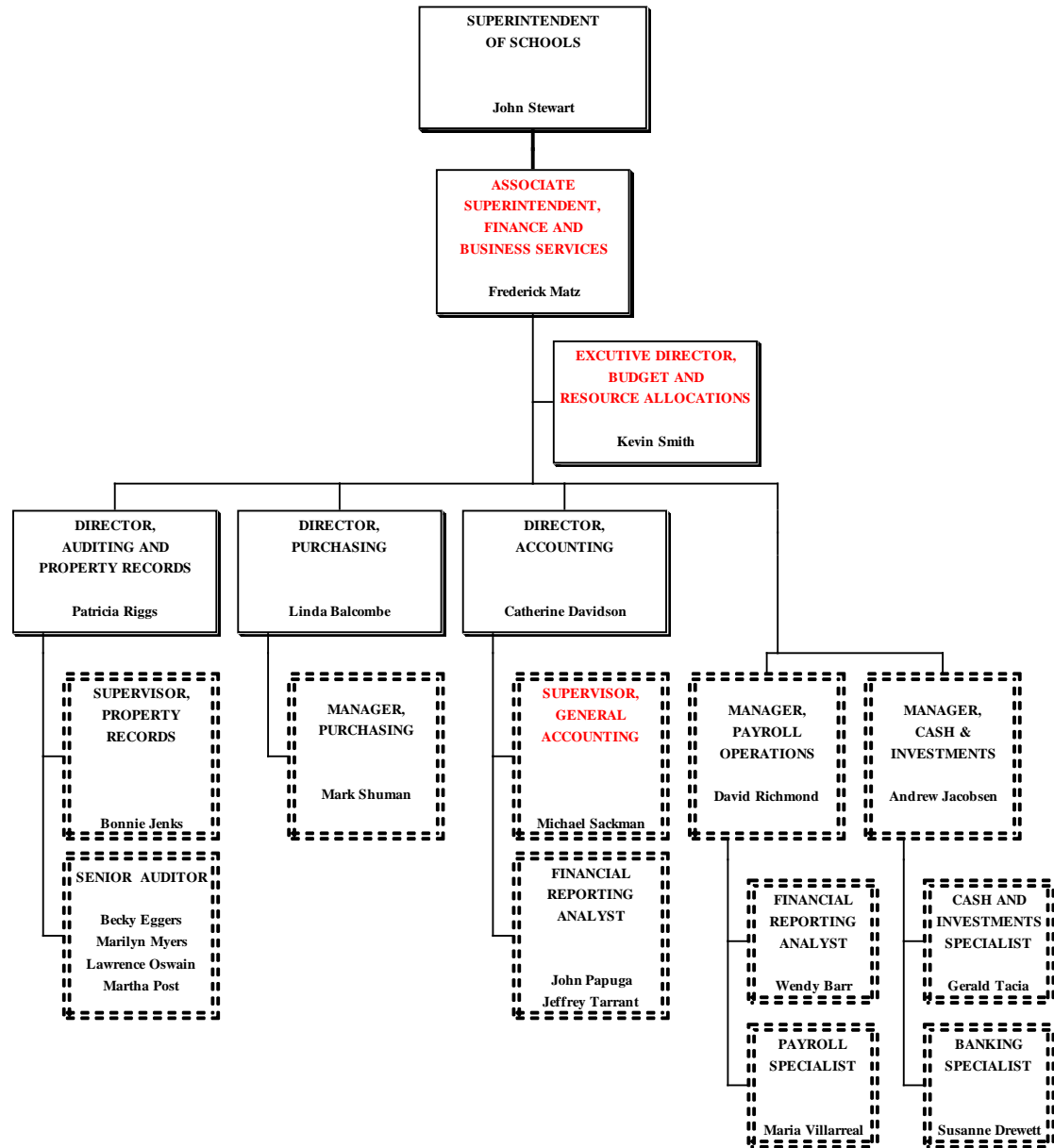
PROPOSED - Recommendation



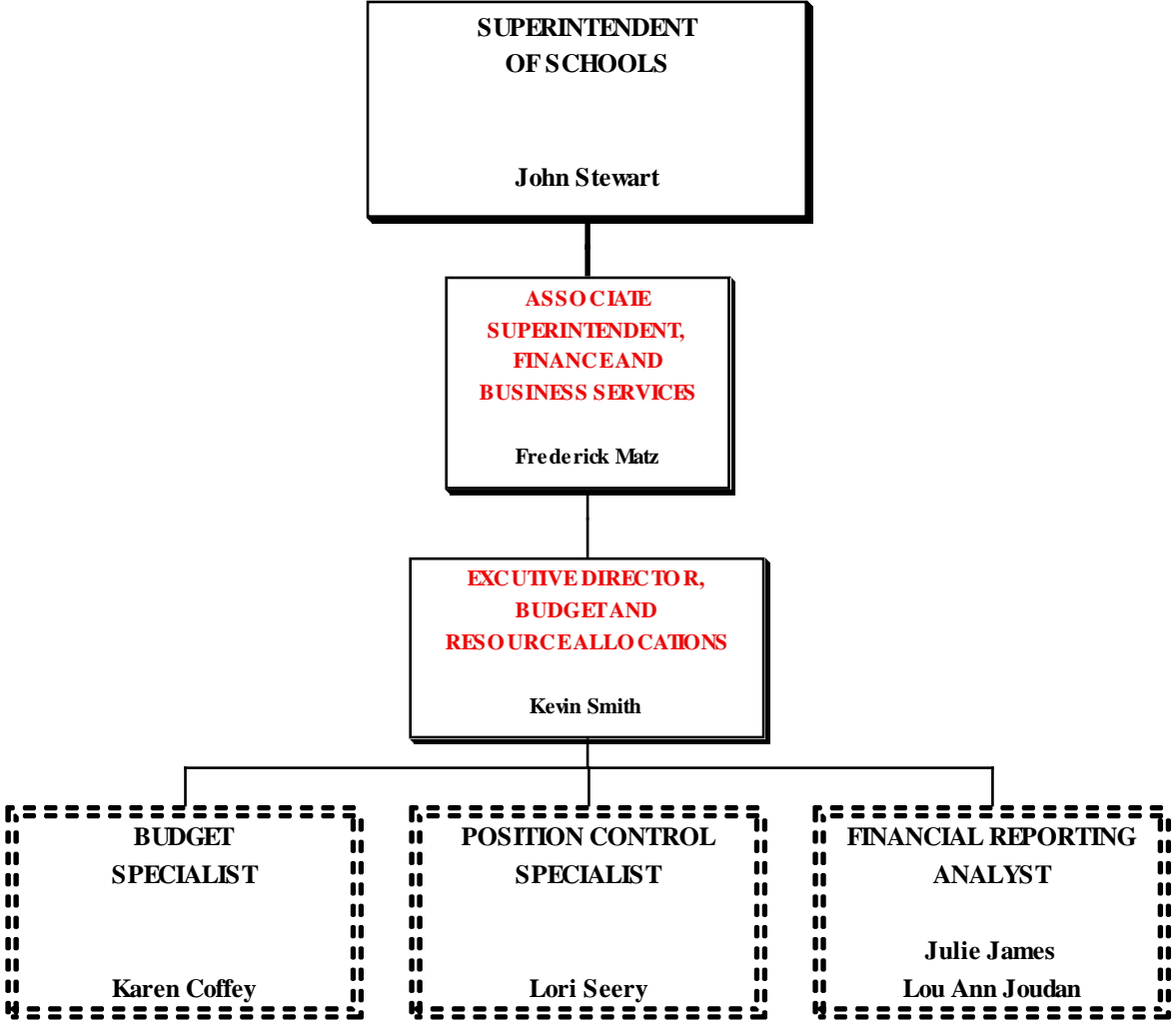
EXECUTIVE DIRECTOR, CAREER, TECHNICAL AND ADULT EDUCATION pTEC PROPOSED - Recommendation



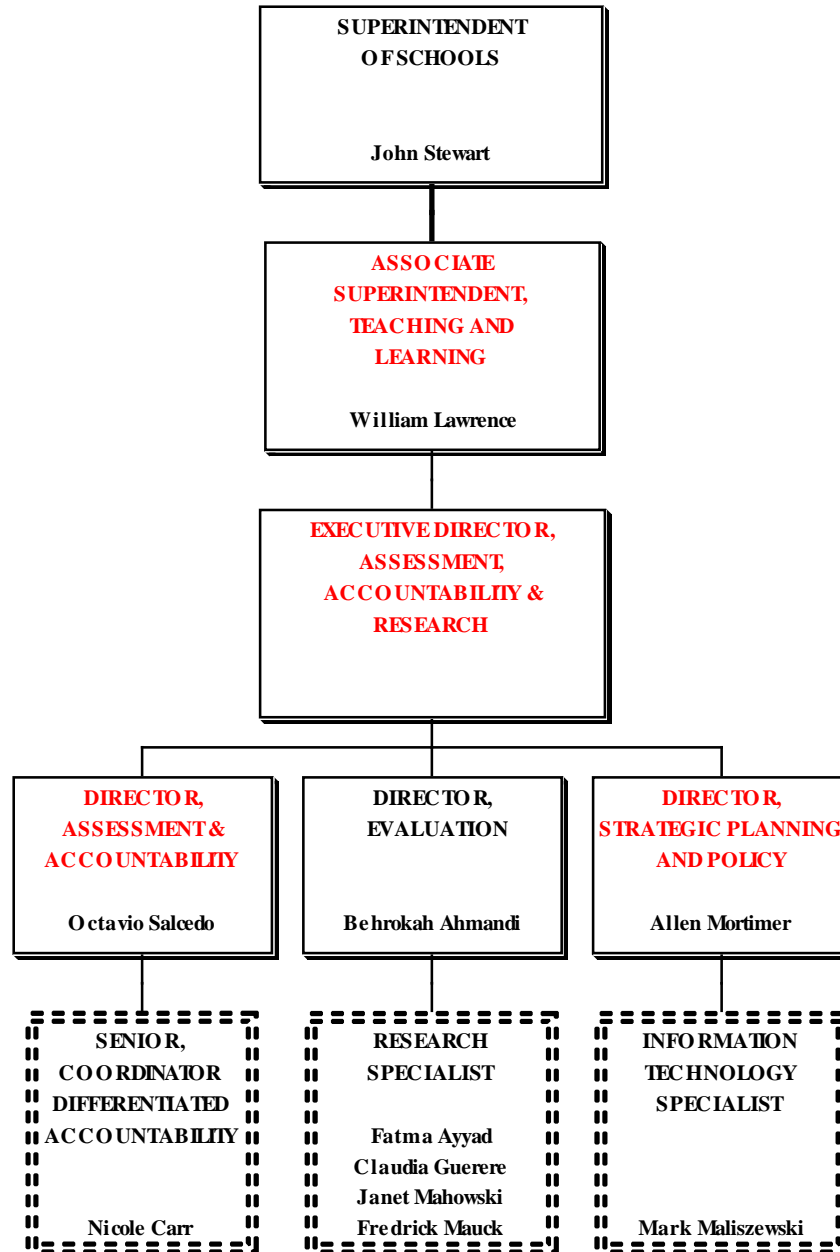
ASSOCIATE SUPERINTENDENT, FINANCE AND BUSINESS SERVICES PROPOSED - Recommendation



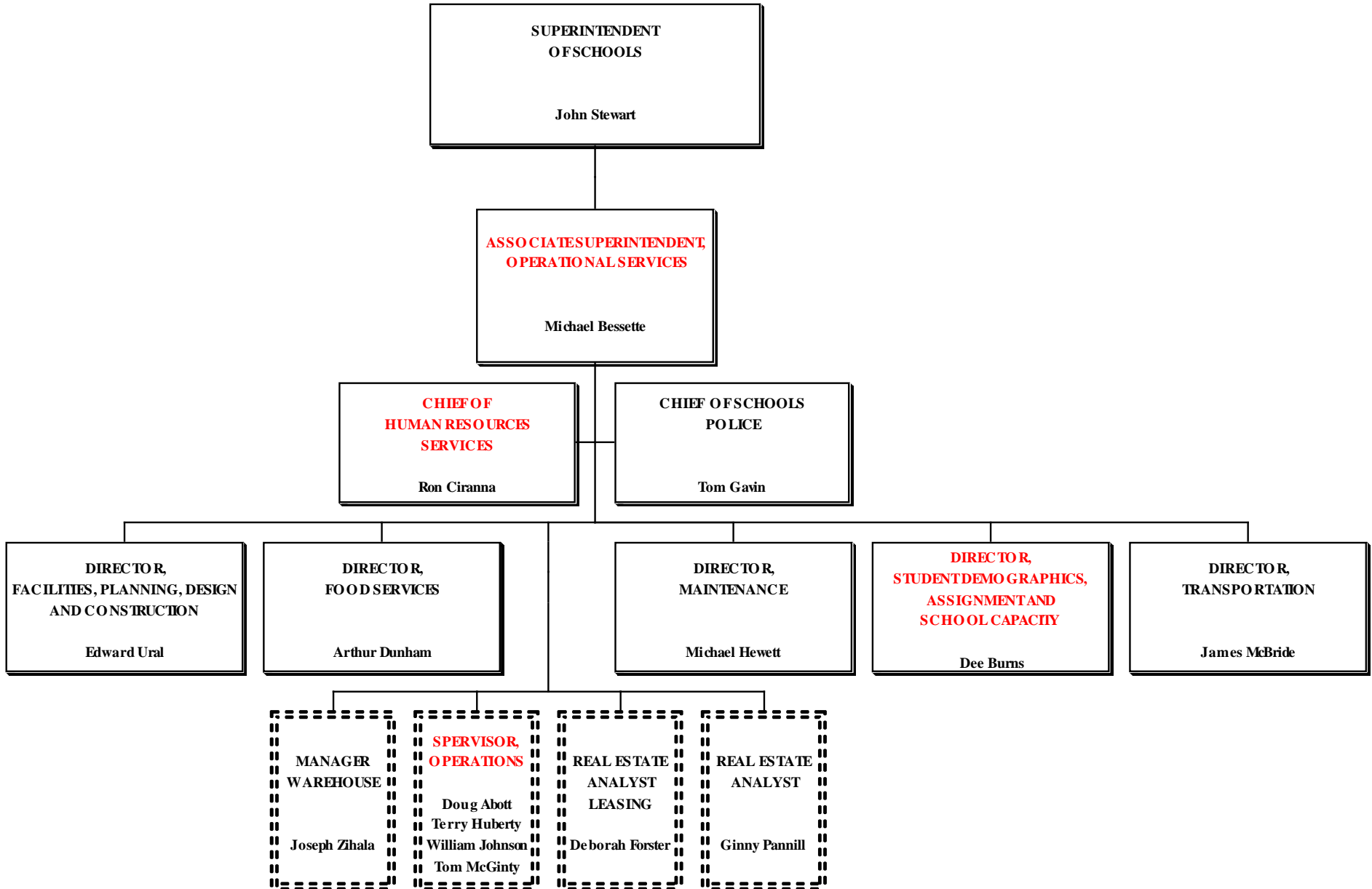
**EXECUTIVE DIRECTOR, BUDGET & RESOURCE ALLOCATIONS
PROPOSED - Recommendation**



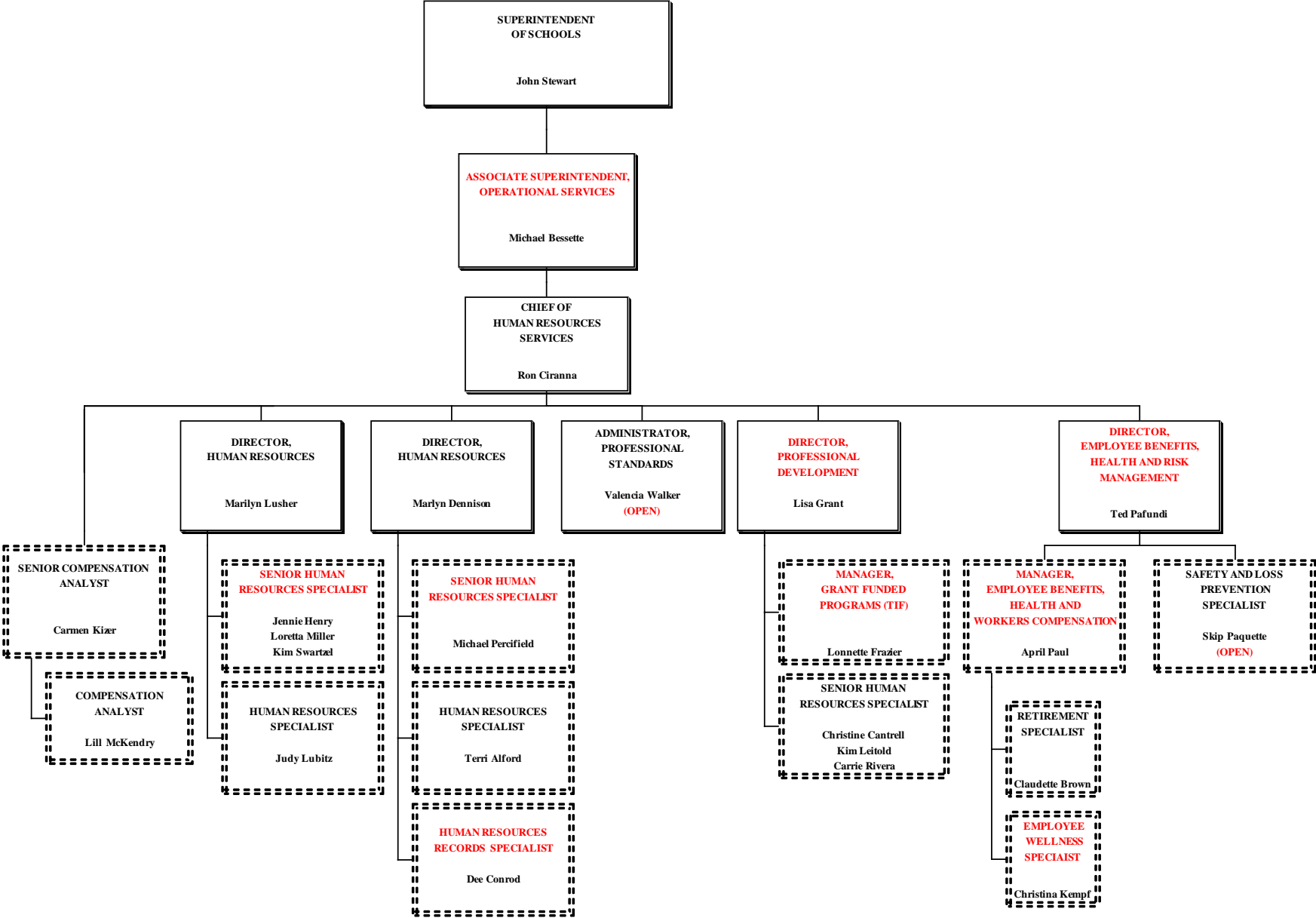
EXECUTIVE DIRECTOR, ASSESSMENT, ACCOUNTABILITY AND RESEARCH PROPOSED - Recommendation



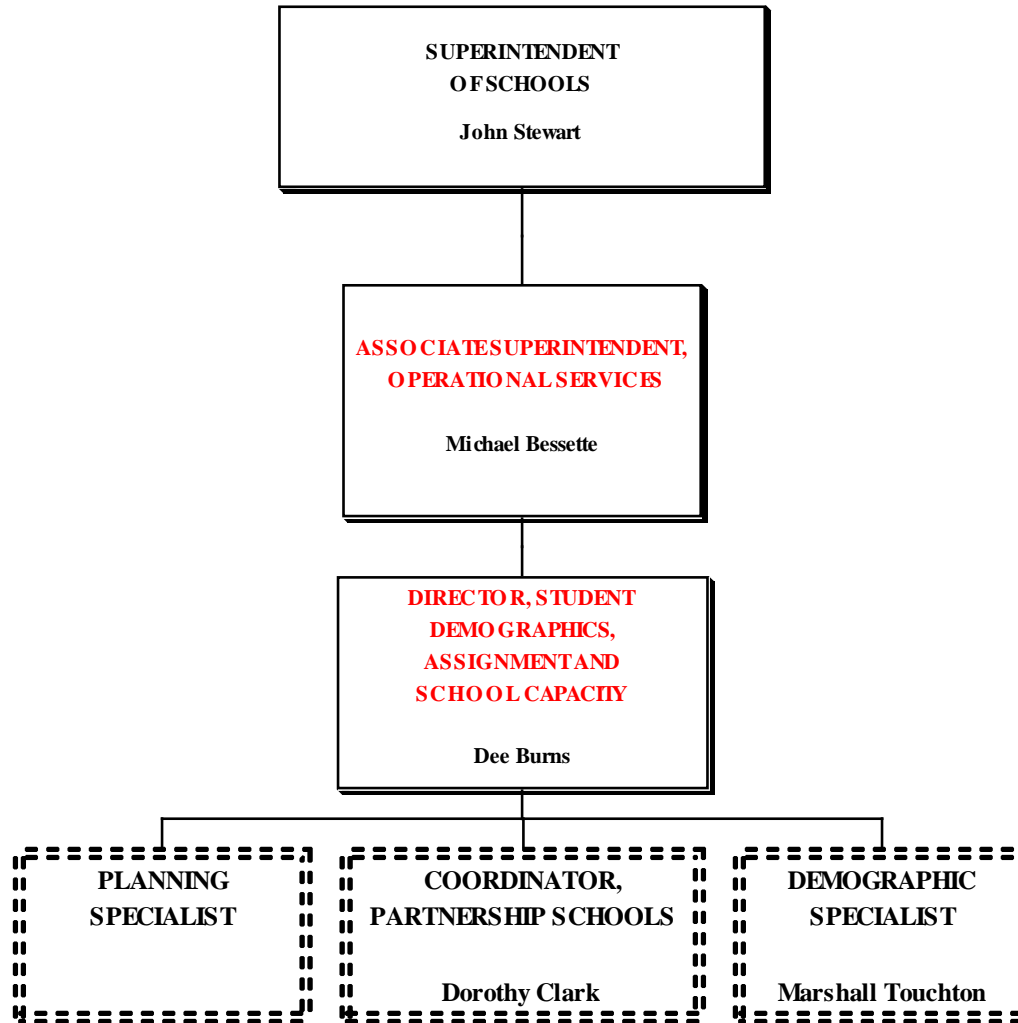
ASSOCIATE SUPERINTENDENT, OPERATIONAL SERVICES PROPOSED - Recommendation



CHIEF OF HUMAN RESOURCES SERVICES PROPOSED - Recommendation

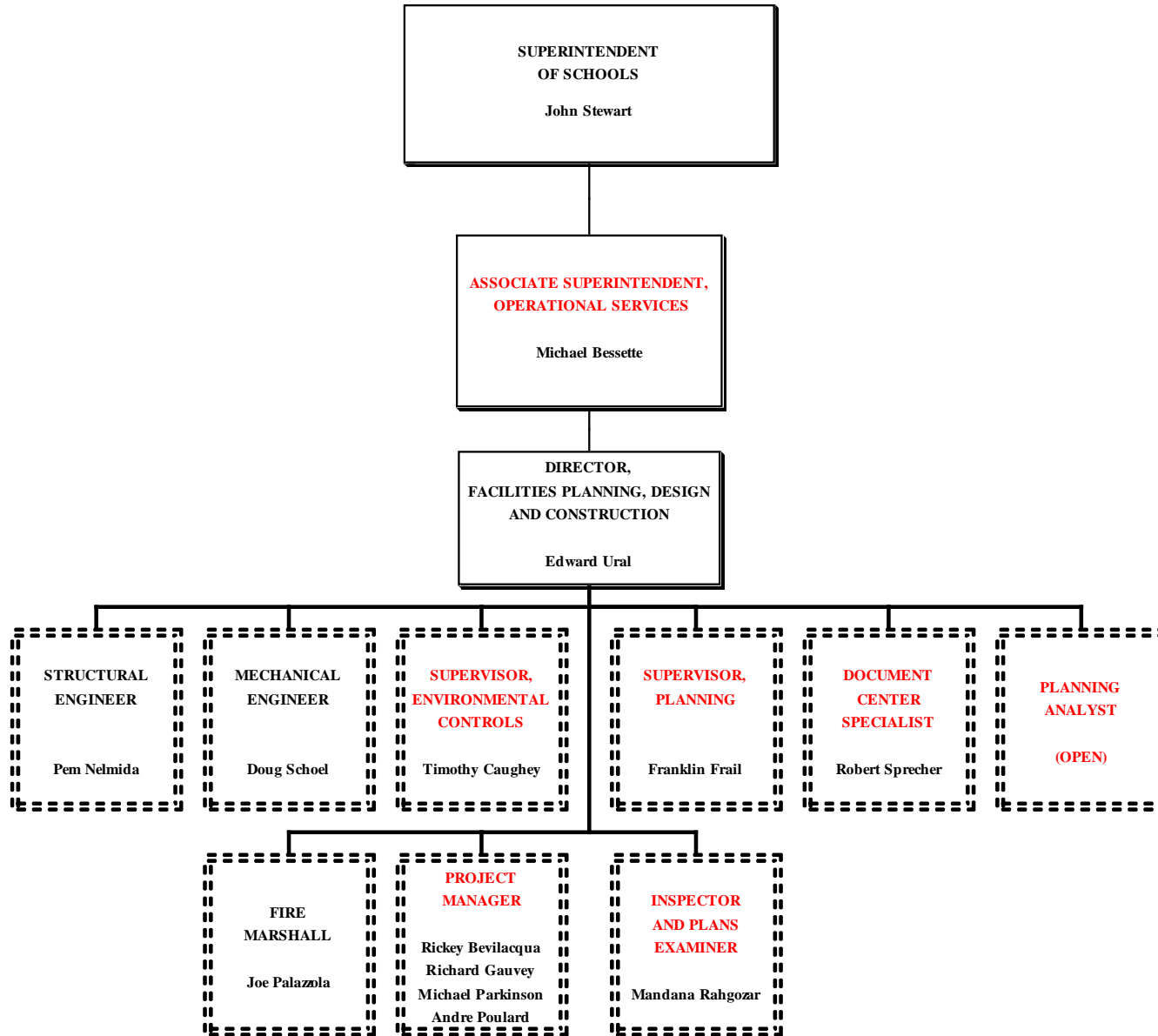


**DIRECTOR, STUDENT DEMOGRAPHICS, ASSIGNMENT AND SCHOOL CAPACITY
PROPOSED -Recommendation**



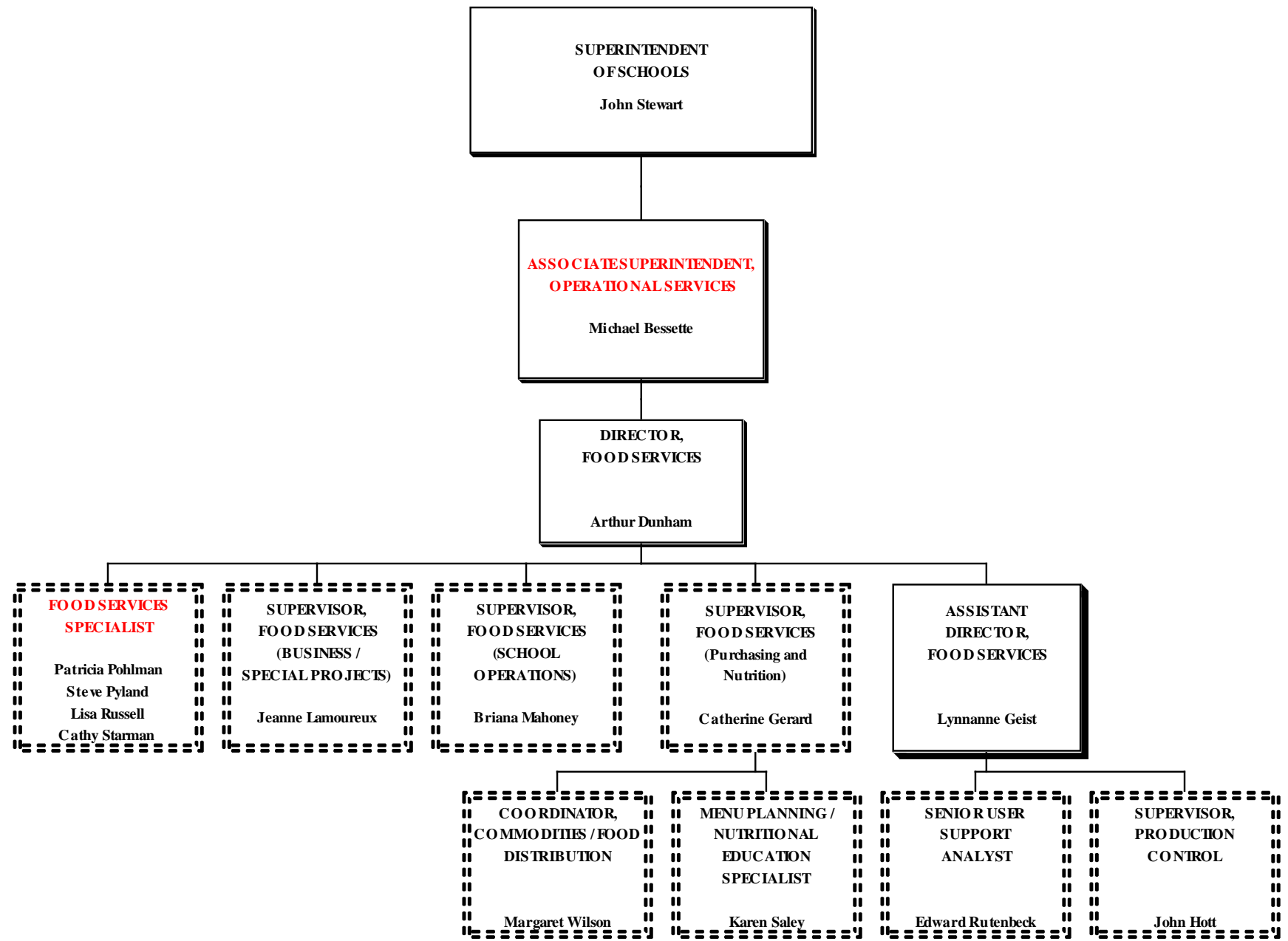
DIRECTOR, FACILITIES PLANNING, DESIGN AND CONSTRUCTION (FACILITIES)

PROPOSED - Recommendation

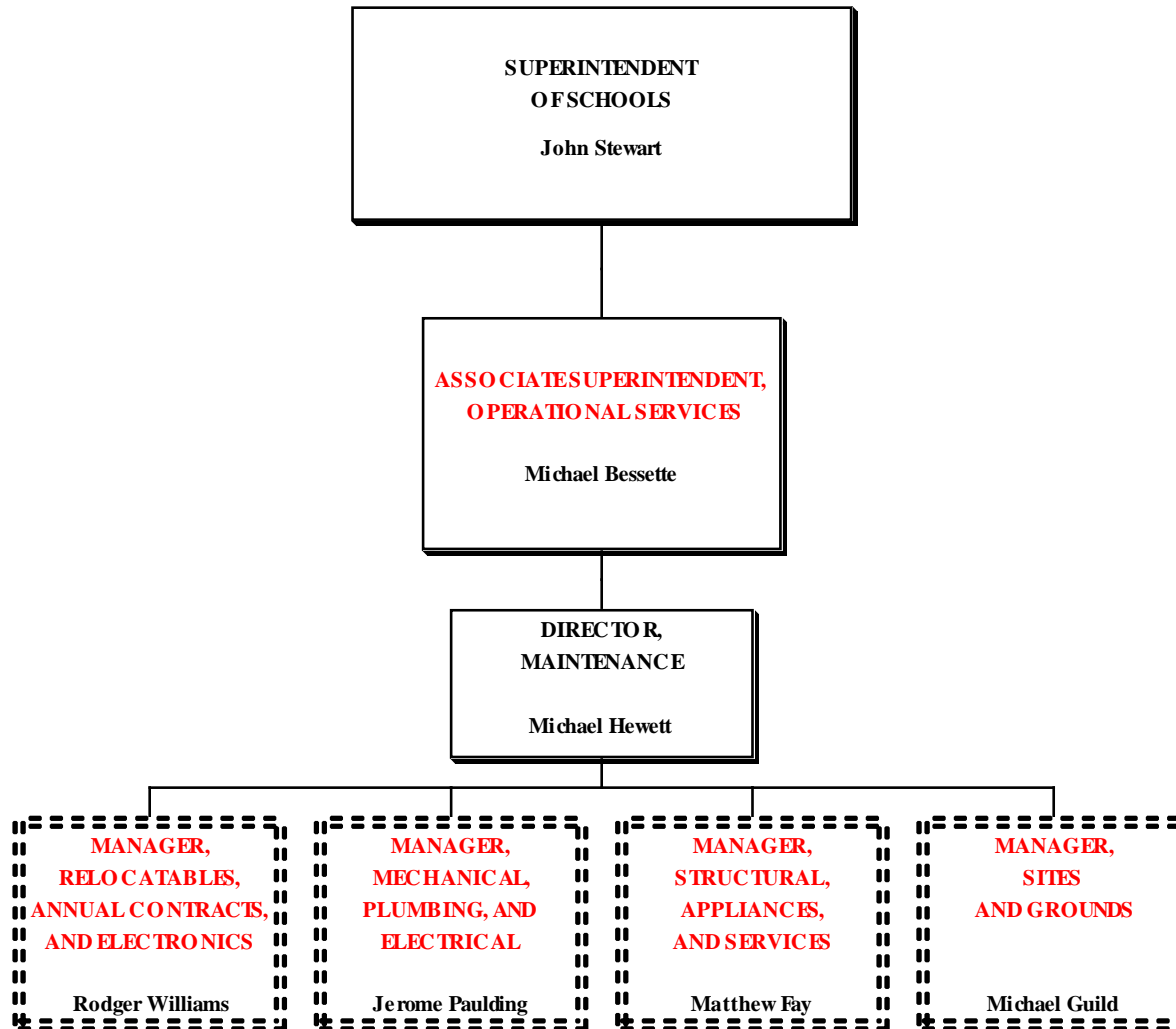


DIRECTOR, FOOD SERVICES (OPERATIONS)

PROPOSED - Recommendation

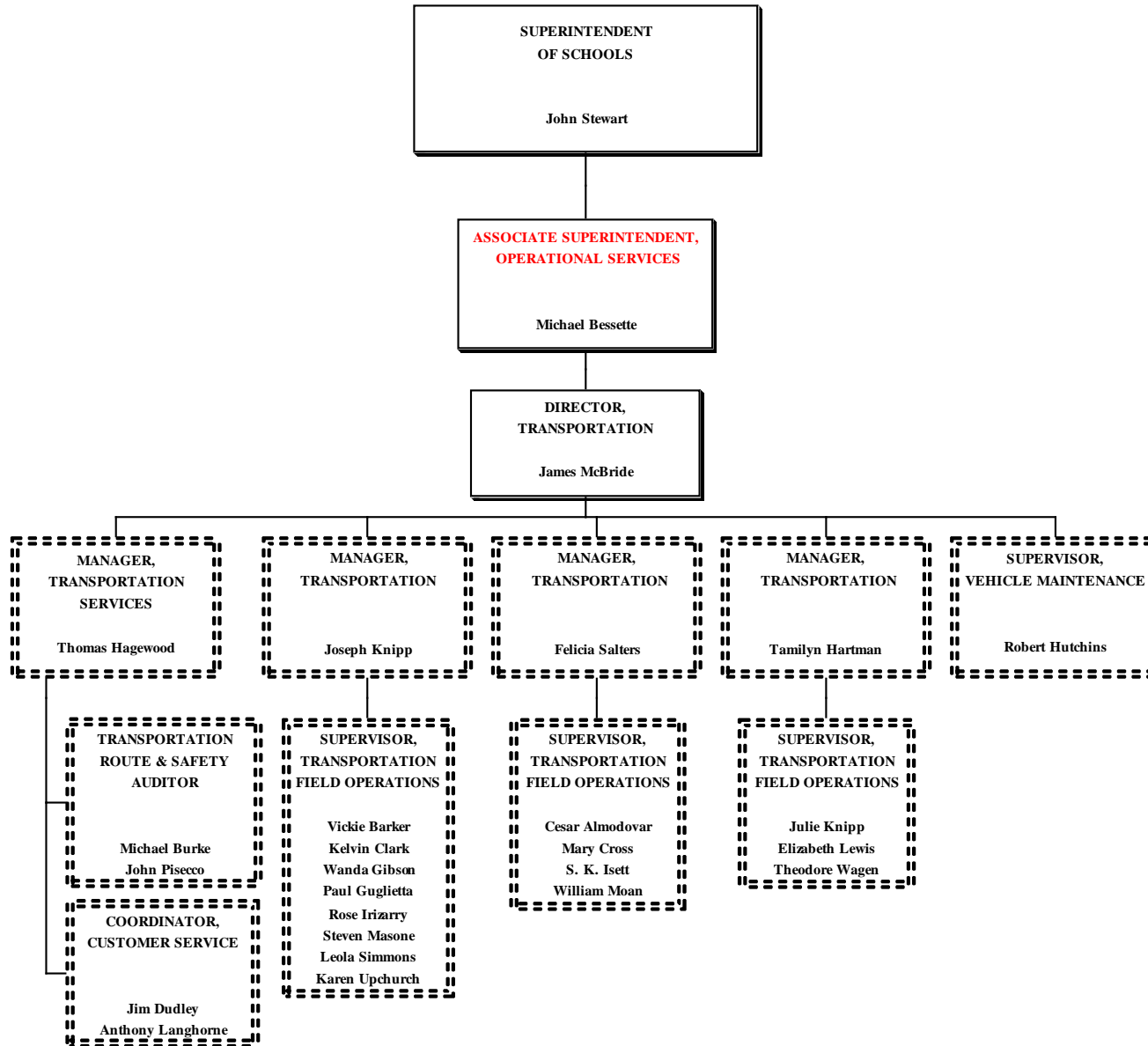


**DIRECTOR, MAINTENANCE
(FACILITIES)
PROPOSED - Recommendation**

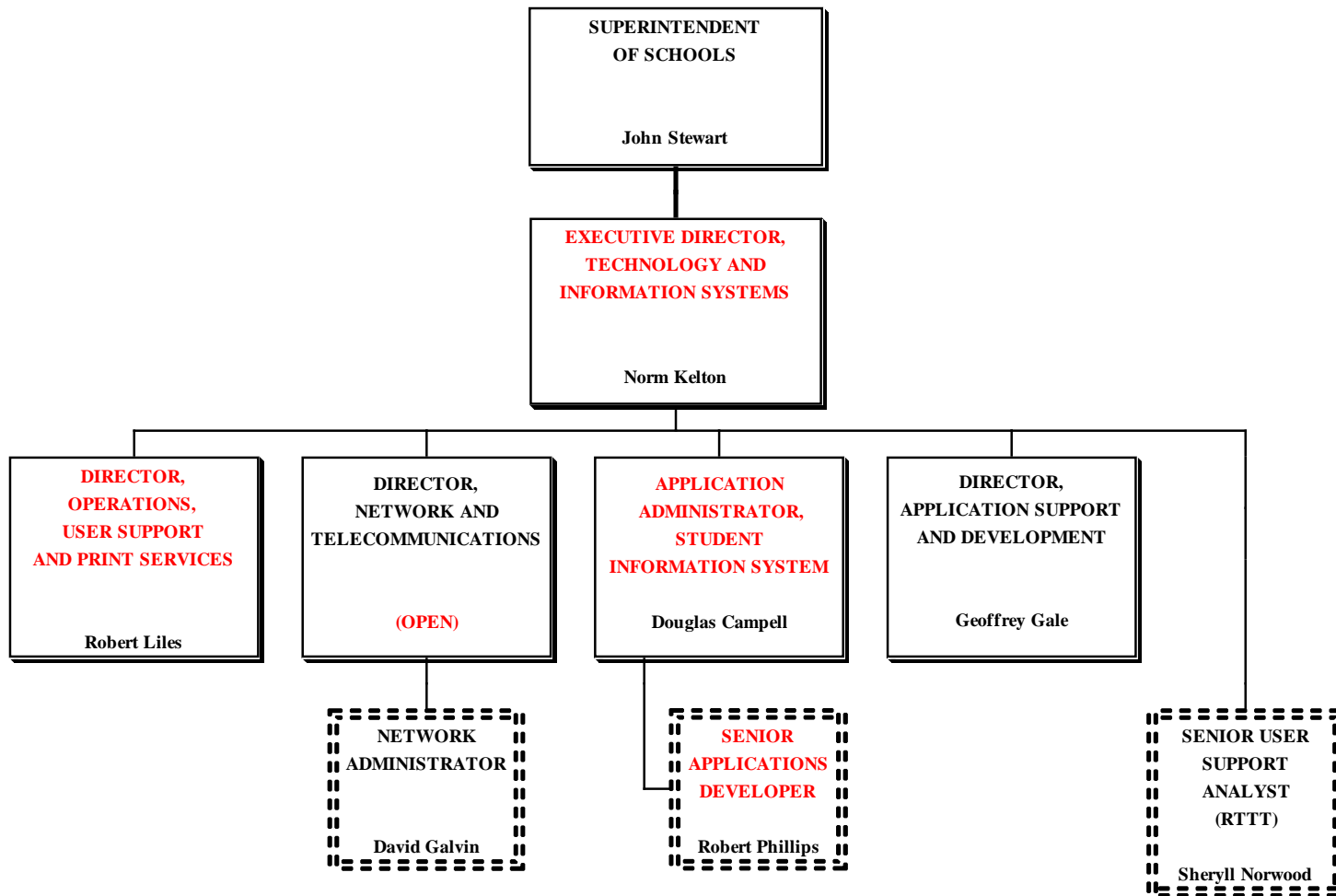


DIRECTOR, TRANSPORTATION (OPERATIONS)

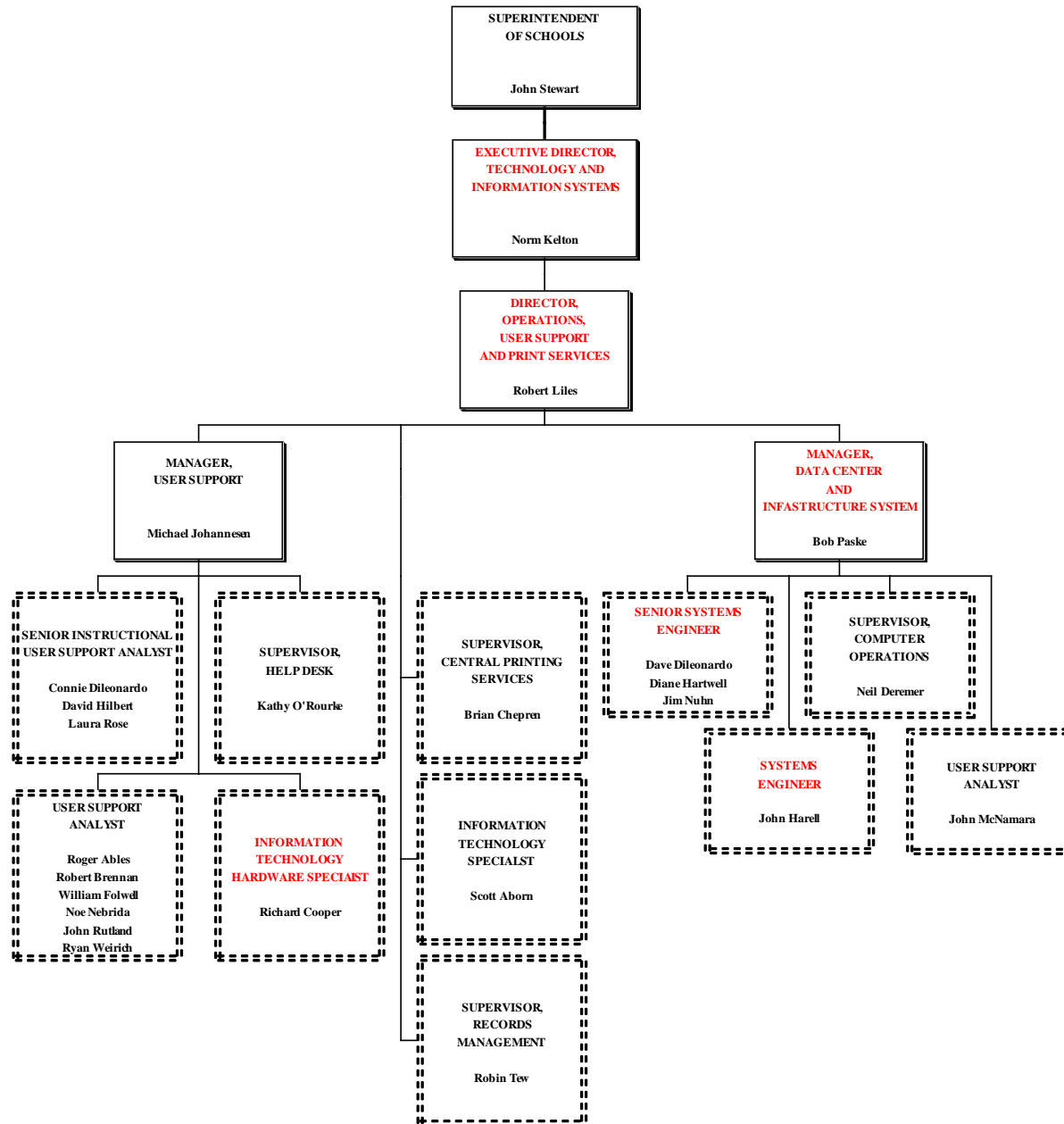
PROPOSED - Recommendation



EXECUTIVE DIRECTOR, TECHNOLOGY AND INFORMATION SYSTEMS PROPOSED - Recommendation

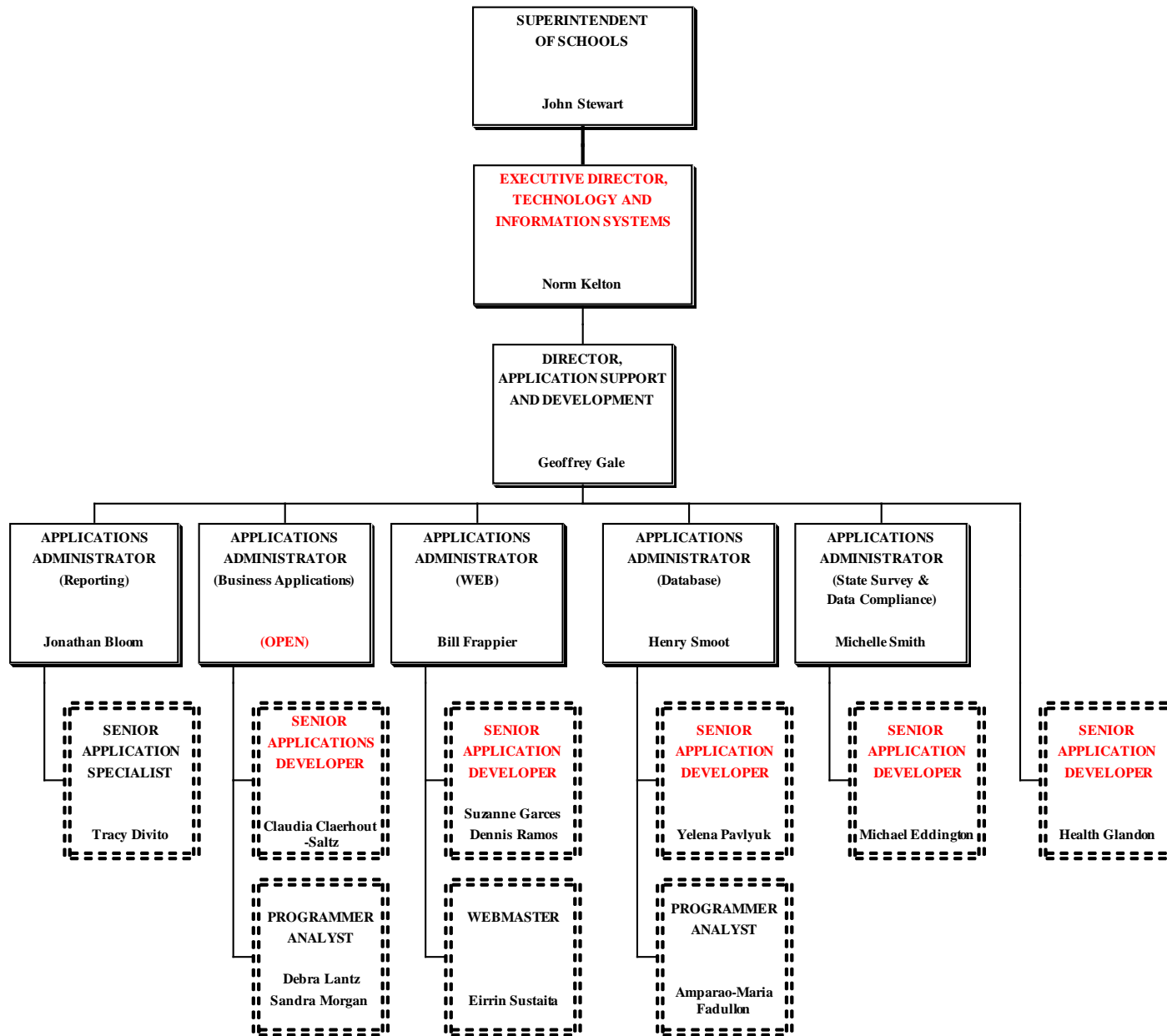


DIRECTOR, OPERATIONS, USER SUPPORT AND PRINT SERVICES PROPOSED - Recommendation



DIRECTOR, APPLICATION SUPPORT AND DEVELOPMENT

PROPOSED - Recommendation



Produced By

Pinellas County Schools

Human Resources

Compensation

301 - 4th Street SW

Largo, FL 33770