

It's time to start school!

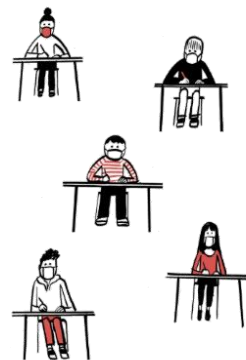


Whether you have chosen to come to the school building or learn online, we are excited to have our scholars back with us for another year of learning. While things will be different this year, we will adjust to the changes and be better than ever! Please see our webpage at <https://www.pcsb.org/ridgecrest-es> for teacher contact information and be sure to listen out for the parent messenger calls and emails from Principal Graham.



Families that are doing **MyPCS** for the first 9 weeks, please reach out to your assigned teacher first for any support with Canvas or technology issues. For those of you who have chosen to return to the school building, please read the following procedure changes for the new school year.

- School will start on August 24. Our times will continue to be 8:45 to 2:55. **The campus opens for scholars at 8:15.** Due to social distancing, scholars will no longer be able to congregate in the front of the school. **Therefore, parents may not drop scholars off before 8:15.** The R'Club and YMCA has before and after care for those that need it. These programs open at 6:30 am.
- Upon arrival at 8:15, scholars will go directly to class. We will have three stations available for scholars who want breakfast at the car circle, bus gate and the walkers gate. It will be a grab and go breakfast that scholars will eat in their classroom. Breakfast service will conclude at 8:45. Any student who arrives after 8:45 will receive a tardy slip and proceed to class.
- Masks – Scholars and staff will be required to wear a mask. The school will provide reusable cloth (washable) masks and lanyard for each student. I suggest that your child have their own mask for the first day of school that they feel comfortable wearing. Any child not wearing a mask will be provided one. Classrooms have been set up to maximize distance from one another. The expectation is masks are to be worn at all times. PreK and VPK have some modifications.
- Specials Classes – Scholars will continue to have art, music and PE weekly along with recess. Social distancing will be practiced and monitored and no equipment sharing will be permitted.





- Lunch – Lunch is FREE this year for all scholars. Lunch will be eaten in the cafeteria and Wigfall Hall for spacing and distancing. Reminders are visible and provide directions for moving safely in the cafeteria. Hand sanitizer will be on hand as well as plexiglass dividers on each table. Weather permitting and supervision available, scholars may be allowed to eat outside.



- Daily Learning – teachers will cover all the state standards required of each grade level. We are not changing the curriculum. Scholars will still be provided the high-quality instruction you have come to know from Ridgecrest. Scholars will still receive direct and small group instruction and modified ways of collaborating safely.



- In case of emergencies, please ensure that you have the correct contact information on file to stay informed about what's occurring at your child's school and in the district. Parents and guardians can receive phone calls, as well as opt in for emails and text messages. Get updated at [pcsb.org/contactinfo](https://www.pcsb.org/contactinfo).

- Parents may go to <https://www.pcsb.org/mypcsonline> to learn more information about online learning, how to correct simple technical issues, and find other valuable resources. We highly recommend ALL families check out these resources and familiarize themselves with Canvas. Face to Face classes will be using it as a resource as well if were necessary to move all students to MyPCS online.

Parent/Family Information

Parent/Family Canvas Training	Parent/Family Canvas Login
Resources	Technical Support
Take a Tour of MyPCS Online	



The Clinic – **If your child is not feeling well, please keep them home.** If a student gets sick during the school day, our nurse will assess your child as in the past and consult with you. If a student exhibits illness beyond the normal stomachache or minor injury, we will request that you pick your child up. **I strongly encourage you to make back-up plans for pick up and provide the front office with several people for us to contact on your behalf.** Scholars will be isolated if they exhibit Covid -19 symptoms and will only be released to a parent or designee. **They will not be able to be released to an aftercare program or on a bus**

- Cleaning – We have developed a cleaning schedule that allows for daily cleaning/disinfecting of the school building and high touch surfaces throughout the day. Supplies will be provided in each classroom to allow for the cleaning of workspaces by scholars if they choose. These supplies will be non-irritant chemicals that do not require a PPE. Frequent handwashing will be embedded into the day as well as access to hand sanitizer when needed.
- Visitors – For the first 9 weeks, **we are not allowing any visitors on campus that do not have essential business for the operation of the school.** Unfortunately, this means that we cannot allow parents or families to visit for lunch. Volunteer opportunities and mentoring will all be done online at this time. For more information about how you can still be involved in the school, please contact Sharon Johnson at JohnsonShar@pcsb.org. Also, all extracurricular activities have been suspended for the first 9 weeks. This does not include after school tutoring. More information will be coming soon about the Extended Learning Program or ELP.



- First week of school – We will have staff to help your child out of your car and to their class. The same is true for our bus scholars. **PLEASE do not park and walk your child in unless you are in PreK/VPK and kindergarten for the first three days.** (see Dismissal for parking location info) We kindly ask that you use the carline to drop off your child. I know this is scary for our first- time scholars and not the way we normally do things. However, we will have plenty of adults to help your child to class.

- PreK Drop Off and Pick Up will be at the cafeteria front doors. You will see several adults there to welcome your child to school. PreK parents may park and walk their child to the cafeteria doors. Thank you everyone else for observing this rule all year long.
- Dismissal – Please be patient as we try to release the children as safely and efficiently as possible with social distancing. Like the start of every school year, dismissal can seem a bit chaotic. As your principal, I truly appreciate everyone’s smile and understanding. Please remain in your car or behind designated signage. Again, it will be more efficient if you use the car circle and not park and walk up for everyone’s safety and social distancing. Car riders will be dismissed from inside building 8 by teachers. Walkers will be dismissed from walker gate in front of the school. This includes park and walk ups. If you must park, you cannot park in the bus drive. You may only park next door at the YMCA at the side or rear of the building **ONLY!** Please be sure to adhere to this, as they let us use their parking as a courtesy. Also, please do not park on neighborhood streets. Pinellas County Sheriffs will be on hand to support traffic control.

- For more information on PCS Re-Opening, please click this link to the plan <https://www.pcsb.org/domain/11723>



Thank you for your support and entrusting Ridgecrest to educating your scholar. Stay safe and let’s have a great year.

Ms. Graham, Principal and Mrs. Nguyen, Assistant Principal