

Using ST Math[®] at Home

Instructions for using ST Math at home.



1 Pick Your Device

Computer

Works on Macs, PCs, and Chromebooks.
Requires 1GB of RAM (2GB recommended), and a high-speed Internet connection.

Access

Go to www.stmath.com and click on Jiji the penguin.



or

Tablets

Supported Devices:

- iPad 2 or newer running iOS 5.0 or higher
 - Kindle Fire
 - Full-size tablet running Android 3.1 or later
- A high-speed internet connection is required.

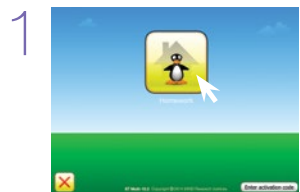
Access

Download the ST Math: School Version app.

- iTunes Store (iPad)
- Google Play (Android)
- Amazon (Kindle Fire)

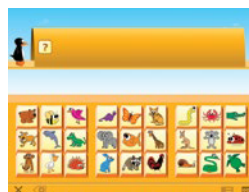


2 Play ST Math



Click on the **Homework** button.

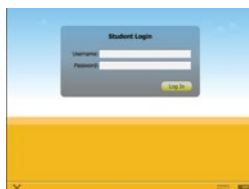
2 Picture



Enter your **password**.

or

Text



Enter your **text login**.



Type in your school name and press **Enter**.

3



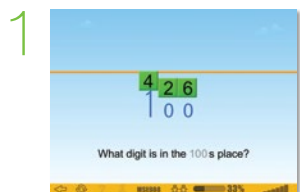
Begin playing assigned homework.

Tip: If there is no Homework assigned, access the previously played content by clicking on **Replay Games** button.

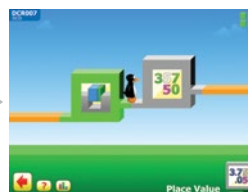
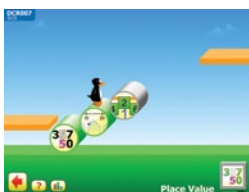
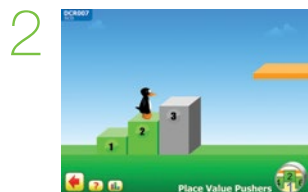


3 Exit ST Math

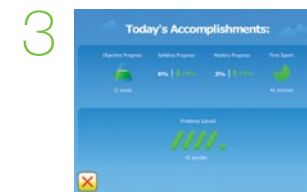
Important: Students should use the following process in order to save their work.



Select the button.



Keep selecting the button until you get to the Today's Accomplishments screen.



Select the button.