

# Lake St. George Elementary

2022-2023



We are excited to have all our students back with us for another year of learning. We are also excited to share that our full school Meet the Teacher event will be held on Tuesday, August 9th.



## Some other important dates to remember:

**Meet the Teacher:** August 9<sup>th</sup> 2:00-3:00pm (all grades)

**First Day of School-**August 10<sup>th</sup>

**School time:** 8:45am-2:55pm

**Open House-** August 24<sup>th</sup> - PreK – 2<sup>nd</sup> grade, 6:00-7:00pm

August 31<sup>st</sup> – ASD, 3-5<sup>th</sup> grade, 6:00-7:00pm

**No School-** September 5<sup>th</sup>, Labor Day

**Who is my child's teacher?** Available in Portal on Focus now.

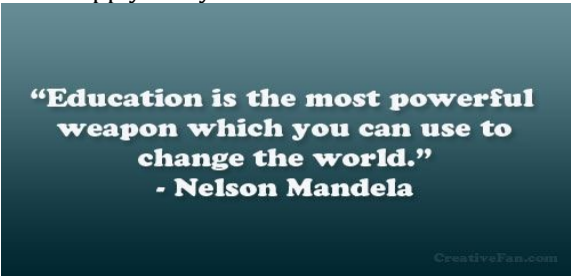
## **Student Placement**

A great deal of time, effort and thought has gone into the process of student placement for the 2022-2023 school year.

Careful consideration was given to your child's placement. Classrooms have been balanced academically and socially. Our class lists are structured to provide equitable class sizes at each grade level, as well as the best way to meet the needs of all learners based on academic performance. Moving students is difficult without causing imbalances and inequities, ESE support, ESOL support, Gifted support are all thought of when making classes. With that, we will not be taking class change requests or moving students. Thank you so much for being positive with your child and helping him or her understand that it is impossible to place all students with a preferred best friend or teacher. ALL our staff works hard to make school a positive experience for ALL students. We are eagerly looking forward to enriching your child's life. Thank you for understanding that it can take a few weeks for a child to acclimate to a new grade, peer group and teacher.

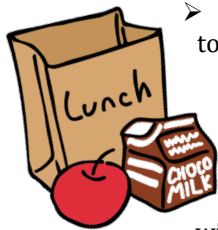
---

- **School will start** on August 10<sup>th</sup>. Our times will continue to be 8:45am to 2:55pm. The campus opens for students at 8:15am. Students may not arrive before 8:15am as there is no supervision. The YMCA has before and after care for those that need it. Their phone number 727-789-5815 if you would like more information to register. Seats are on a limited basis so you will want to apply today.



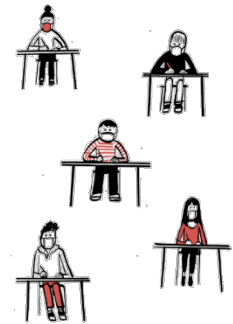
- **Arrival:** Upon arrival students will be directed to the cafeteria for breakfast or to sit in cafeteria until 8:30. At 8:30 they may go directly to class. Breakfast will stop being served at 8:50am so that our staff can begin preparation for lunch. For safety reasons we are limiting our points of entry to the front of the school where the flag pole is and the back bus entrance. Those are the only 2 areas to enter or exit the building during arrival and dismissal. An employee will be stationed at both points of entry.

➤



- **Masks** – Masks are no longer required though students may continue to voluntarily wear them if they wish.

➤ **Lunch**- Most of our students will eat in the cafeteria and we will continue to maximize space for safety. Families may once again join **their child only** for lunch **on Fridays** at our outside picnic tables; but they must come during their child’s designated lunch period as students will not be pulled out of learning to have lunch. Please be sure you have an ID, and all visitors must be on the child’s card. If you click on the blue link below, it will take you to the application for free/reduced lunch. It’s great for the school if all children apply. The link will also guide you to the area you can put money on your child’s account.



- [Food and Nutrition / Food and Nutrition Department](#)

- Food Service Department - View printable and interactive lunch and breakfast menus and apply for school lunch programs.

- [www.pcsb.org](http://www.pcsb.org)

## 2022-2023 School Year Meal Prices:

Meal	Paid Cost	Free/Reduced Cost
Student Breakfast	\$0.00	No charge
Elementary Lunch	\$2.25	No charge
Secondary Lunch	\$2.75	No charge
Adult Breakfast	\$2.25	-
Adult Lunch	\$3.50	-

- **Daily Learning** – teachers will cover all the state standards required of their grade level. Students will be able check out books, work on projects and collaborate with their peers. Your child will receive small group instruction and still have access to our computer lab and science lab materials.



- **The Clinic** – If your child is not feeling well, please keep them home. If a student gets sick during the school day, our nurse will assess your child as in the past and consult with you. If a student exhibits illness beyond the normal stomachache or “boo-boo”, we will request that you pick your child up. I strongly encourage you to make back-up plans for pick up and provide the front office with several people for us to contact on your behalf. Each day parents will be asked to assess their child’s health before bringing them to school. Students with any of the following symptoms should not come to school:
  - Temperature above 100.4/chills
  - Vomiting or gastrointestinal issues
  - Chronic cough/shortness of breath
  - Loss of taste or smell
  - In general, if your child is not well, they should stay home.
- **Dismissal** – Students will be dismissed at 2:55. Pre-K parents will continue to pick up their students from the NW side of the building. Each child will be given a car tag sign, please display it on your dashboard for easy viewing of our staff to be able to call for your child. All families should pull up all the way to the end of the car circle. **New this year, we are cracking down on car circle pickup, if we don’t know you and you do not have our car sign, we will have you pull up and show id and check your name to our files. Your name MUST be on the child’s car permittable pickup. I’m sure you understand the need for safety first.** Children are not permitted to run out to the parking area to meet their families; if you choose to park, your child must be walked across in one of our designated crosswalks by an adult. Please do not call for your child to cut across our traffic lanes. That is an accident waiting to happen. We will stop them. Please be sure you are following the traffic patterns. Pull your car forward leaving no spaces between to ensure we can load the maximum number of students. This works very much like loading a roller coaster. All cars get filled and then the group moves forward, and we repeat the cycle. Please be patient the first few days of school as we help our new families adjust and make sure that all students get to their proper dismissal location. The line goes quicker when everyone is following the rules including following the traffic pattern and remaining in your car. It does get better!!
- **Extra Info:** We have several students with special safety needs that need extra support at dismissal. We dismiss these 20 students a little bit early. The teachers of these students have discussed their dismissal with these families specifically. Because they leave early you may see them “cut the line” of the car circle. They are allowed to go to the front of the car circle and load. The students are gone by the time our car circle begins. However, this ruffles some feathers of parents who line up at 2:00. Thank you for your patience.
- **Special Note:** Please do not have your student walk to meet you at an off-campus location if they are a car rider. If a student leaves campus and then you are not there, they are not permitted to return to campus to wait for you. It is safer for them to remain on campus and that you follow our car line dismissal process. If you designate them a walker, then they must leave campus as a walker.
- **Visitors** – Visitors are permitted on campus for designated purposes (i.e., parent conferences, family events, volunteering, etc.). For security reasons though, families are still not permitted to walk their child to their classroom.



➤ **First week of school** – We will have adults to help your child out of the car and to their class. The same is true for our bus students. However, the first 3 days of school we will allow you to park and walk your child to class. After the first 3 days, PLEASE do not park and try to walk your child in. We kindly ask that you use the carline to drop off your child. I know this is scary for our first-time students, but I promise we will have plenty of adults to help your child to class. Hopefully you will be able to join us for our “Meet the Teacher” event on Aug. 9<sup>th</sup> so that you can see where they will be learning ahead of time.

- **PreK Arrival and Dismissal-** will be in the PreK parking lot located on the northwest side of the building. You will see several adults there to welcome your child to school. VPK parents may park and walk their child to the entrance doors as you will be required to sign your student in (this must be done by an adult). You will receive additional directions and special PreK car tags from your child’s teacher when you arrive about where to pick them up that afternoon. Only PreK students and siblings are to use this parking area. PreK dismissal will continue to be in the back NW parking lot. Thank you everyone else for observing this rule all year long for the safety of our youngest learners.
- **Labels-** Label everything! Backpack, pencil box, notebooks, shirt collar, headphones, water bottles/cups, etc. Many times, we have students who don’t know their last name. It is extremely helpful to have your child’s name on everything. Also, your name and phone number should be written in your child’s backpack.
- **Construction-**As you may have noticed we have construction on CR 95 at Langstaff and Orchard Highlands. For the next few weeks we have asked the Sheriff’s department to be present helping us with safety.

Thank you to all who are helping prepare for the new school year. Your commitment to ensuring that Lake St. George Elementary remains a celebrated and successful school is awe-inspiring. I eagerly look forward to greeting students and families again. It remains an honor and privilege to serve as your principal. Please stop by and say hello. Together, I know we will make this school year one of growth and achievement for all children.

Sincerely

Mrs. Monika Wolcott

Principal