

Service Technology 1 | Master Automotive Technology | Diesel Systems Technician | Nails Specialty | Diesel Maintenance Technician | Cosmetology | Facials Specialty | Applied Cybersecurity | Technical Service Technologies | Barbering | Accounting Operations | Web Development | Child Care Development & Programming | Network Support Services | Building Trades & Construction | Early Childhood Education | School Age Professional Certificate | Electricity | Electronic Systems | Cabinetmaking | Computer-Aided Drawing & Modeling | Heating, Ventilation, Air-Conditioning | Heating, Ventilation, Air-Conditioning/Refrigeration 1 | Plumbing | Central Sterile Processing | HVAC/R) 1-IET | Interior Decorating Services | Phlebotomy | Practical Nursing | Emergency Medical Technician | Medical Coder/Biller | Professional Culinary Arts & Hospitality | Baking & Pastry Arts | Fundamental Foodservice Skills | Machining Technologies | Jewelry Design and Repair | Stage Production | Television Production | Welding Technology - Advanced | Public Works | Automotive Collision Technology Technician | Master Automotive Technology | Commercial Technology 2 | Commercial Class B Driving | Marine Systems Technician 1 | Diesel Systems Technician 2 | .NET Application Development | Nails Specialty | Technology (CSIT) | Medical Administration | Security | Child Care Center Operations | Early Childhood Education | Building Trades & Construction Design Technology | Systems Integration



Something For Everyone.
Training Makes It Work.



Clearwater
727.538.7167

PINELLAS TECHNICAL COLLEGE 

Getting started *is Easy.*



Take the State Literacy Test or provide a Qualifying Exemption



Apply for Financial Aid



Meet with a School Counselor and a Financial Aid Advisor

Terms typically start in August, October, January, March, & May.

FINANCIAL AID Application Steps and Resources

Financial aid to help cover the cost of a Pinellas Technical College education is available to those who qualify. This aid includes Federal and State Grants, and Scholarships.

- Complete the FAFSA application at www.fafsa.gov
Federal School Codes:
005605 (Clearwater Campus)
013917 (St. Petersburg Campus)
- Veterans, and other eligible students, may use their Veterans (VA) benefits, including the Montgomery GI Bill and Post 9/11 Bill
- Other Sources include Florida Prepaid and the Florida Bright Futures Scholarship

MISSION

“Provide students the opportunity to develop national workplace competencies to fill the needs of business and industry.”

VISION

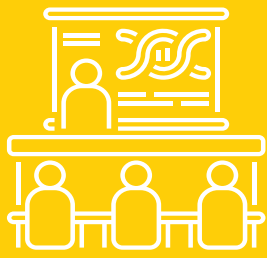
“To be our communities’ first choice for workforce education.”

MORE INFORMATION:

Clearwater | 727.538.7167

Mon – Thu 7:00 am – 9:30 pm | Fri 7:00 am – 5:45 pm





Programs

For specific admission requirements and course content, refer to www.myptc.edu. Certificate of Completion is awarded when state requirements are met for program.

■ ARTS & AUDIO/VISUAL

Stage Production

CLW

Dive into the dynamic behind-the-scenes world of Music and Stage Production with our hands-on program led by our experienced instructor. With small class sizes, our program is designed to transform you into a skilled Audio, Video, & Lighting Equipment Technician, empowering you with innovative technical and creative skills for the evolving industry.

Length: 300 hrs (approx 6 mos)

Tuition: \$876 Other: \$337 (bks, equip & fees; estimate)*

■ AUTOMOTIVE & TRANSPORTATION

Master Automotive Service Technology 1

CLW

Obtain the skills of an entry-level technician in the automotive industry through hands-on practical experience in maintaining, troubleshooting, replacing and repairing brake systems, steering & suspension, electrical systems and engine repair.

Length: 1050 hrs (approx 11 mos)

Tuition: \$3,066 Other: \$7,299 (bks, equip & fees; estimate)

Master Automotive Service Technology 2

CLW

Obtain the skills of an entry-level technician in the automotive industry through hands-on practical experience in engine performance, automatic and manual transmissions and automotive HVAC. Students must complete Automotive Service Technology 1 or demonstrate mastery of the program outcomes prior to enrollment in Automotive Service Technology 2.

Length: 750 hrs (approx 8 mos)

Tuition: \$2,190 Other: \$1,941 (bks, equip & fees; estimate)

Diesel Maintenance Technician

CLW

Are you interested in learning how to service and maintain commercial heavy-duty vehicles? Our training program covers basic skills and proper shop safety, air braking systems, and preventative maintenance inspections. With this program, you will gain high-quality abilities that can help you secure employment in the heavy-duty repair industry.

Length: 600 hrs (approx 6 mos)

Tuition: \$1,752 Other: \$7,217 (bks, equip & fees; estimate)

Diesel Systems Technician 1

CLW

Kickstart a successful career in the diesel industry with our Diesel Systems Technician 1 Program, delivering 1050 hours of comprehensive training, including job safety and soft skills, to ensure you meet the critical demand for skilled technicians. By providing ASE certification and partnering with leading organizations for employment, our program paves the way for graduates to secure entry-level positions like Truck/Trailer Mechanics Helper and Marine Mechanics Helper, among others

Length: 1050 hrs (approx 11 mos)

Tuition: \$3,066 Other: \$1,335 (bks, equip & fees; estimate)

Diesel Systems Technician 2

CLW

Elevate your diesel industry career with our Diesel Systems Technician 2 Program, offering advanced instruction in diesel engine preventative maintenance, hydraulics, and heating/air conditioning techniques through a blend of classroom, lab, and real-world readiness training based on FLDOE curriculum frameworks. This program meticulously prepares students for industry entry, emphasizing essential skills and concepts while tracking progress through competencies and task sheets to ensure comprehensive skill development.

Length: 750 hrs (approx 8 mos)

Tuition: \$2,190 Other: \$947 (bks, equip & fees; estimate)

Marine Service Technologies

CLW

Begin a career in the field of marine mechanics as a service writer or outboard engine, stern drive, inboard gas or diesel technician.

Length: 1350 hrs (approx 14 mos)

Tuition: \$3,942 Other: \$6,974 (bks, equip & fees; estimate)

■ BEAUTY

Barbering

CLW

This program is designed to prepare students for a master Barber license. The curriculum includes theoretical instruction and hands-on practical training. Students will gain experience in a variety of barbering techniques, such as using clippers, shears, clipper over comb, shears over fingers, shampooing, facials, beard trimming, as well as color and chemical services.

Length: 900 hrs (approx 10.5 mos)

Tuition: \$2,628 Other: \$3,114 (bks, equip & fees; estimate)

■ BUSINESS & INFORMATION TECHNOLOGY

.NET Application Development & Programming

CLW

Prepare for employment as a software developer. Learn about creating dynamic websites, iOS and Android phone apps and computer software.

Length: 1050 hrs (approx 11 mos)

Tuition: \$3,066 Other: \$1,051 (bks, equip & fees; estimate)

Accounting Operations

CLW

Prepare for a career in a financial business environment. Training in QuickBooks and related software will be used to enhance workplace productivity.

Length: 900 hrs (approx 9 mos)

Tuition: \$2,628 Other: \$1,081 (bks, equip & fees; estimate)

Applied Cybersecurity

CLW

Prepares students for employment with analytical and technical coursework in ethical hacking, information security management, network defense, computer forensics, risk management, cloud computing, and cyber ethics to foster critical thinking. These measures are used to protect organizations from the growing threats of infiltrations and cyberattacks.

Length: 750 hrs (approx 8 mos)

Tuition: \$2,190 Other: \$1,102 (bks, equip & fees; estimate)

Computer Systems and Information Technology

CLW

In this course, students learn about computer hardware, software, networking protocols, basic routing concepts, and cybersecurity. Additionally, they prepare for the A+, Network+, and Security+ certification exams.

Length: 900 hrs (approx 9 mos)

Tuition: \$2,628 Other: \$1,670 (bks, equip & fees; estimate)

Medical Administrative Specialist

CLW

Prepare for a career as a medical administrative specialist with the necessary knowledge and skills. Content includes keyboarding, computer applications and the use of technology for medical office procedures and tasks.

Length: 1050 hrs (approx 12 mos)

Tuition: \$3,066 Other: \$2,257 (bks, equip & fees; estimate)

Network Support Services

CLW

Learn to troubleshoot complex computer network issues. Prepare to earn certifications CompTIA Network+, Cisco Certified Systems Technician (CCST), Cloud Essentials+, and CompTIA Security+.

Length: 1050 hrs (approx 11 mos)

Tuition: \$3,066 Other: \$1,240 (bks, equip & fees; estimate)

Web Development

CLW

Craft sophisticated web solutions with a focus on modern web technologies. Our program delivers in-depth training in front-end and back-end development, including HTML, CSS, JavaScript, and PHP. Students are equipped with the skills to build responsive and accessible websites, preparing them for industry-standard certifications and dynamic careers.

Length: 1050 hrs (approx 11 mos)

Tuition: \$3,066 Other: \$1,628 (bks, equip & fees; estimate)

CHILD CARE

Child Care Center Operations

CLW

Learn how to operate a day care center by developing competencies required for the Florida Child Care and Education Program Director Credential.

Length: 45 hrs (approx 5 weeks)

Tuition: \$132 Other: \$129 (bks, equip & fees; estimate)*

CONSTRUCTION & DESIGN

Cabinetmaking

CLW

Gain the quality skills and craftsmanship to obtain a position in the cabinetmaking industry by developing skills in the design, layout, and construction of cabinets, furniture, and millwork.

Length: 1200 hrs (approx 12 mos) Tuition: \$3,504 Other: \$2,112 (bks, equip & fees; estimate)

Electricity

CLW

Prepare for employment as an electrician. Content includes basic safety and code, circuits, diagramming, all phases of residential wiring circuits and installation, pipe bending, transformers, motor controls, and data and fiber cabling.

Length: 1200 hrs (approx 12 mos) Tuition: \$3,504 Other: \$2,262 (bks, equip & fees; estimate)

Electronic Systems Integration and Automation

CLW

Prepare students for employment in a variety of occupations in the Electronics Technology Integration Industry (Limited Voltage). Learn basic safety, all phases of cable installations and equipment for communications, CCTV, networking, access control, alarm, audio, video, automation, low voltage lighting, rack and home theatre systems.

Length: 750 hrs (approx 8 mos)

Tuition: \$2,190 Other: \$2,786 (bks, equip & fees; estimate)

Heating, Ventilation, Air-Conditioning /Refrigeration (HVAC/R) 1 - IET

CLW

This versatile program caters to GED and ESOL students, immigrants, and English language learners. It aims to enhance proficiency in English, Mathematics, and Employability, thereby empowering students to find gainful employment in the HVAC/R industry. The curriculum encompasses a wide range of technical subjects, such as designing, testing, repairing, heating, ventilation, air conditioning, and cooling (HVAC) systems.

Length: 750 hrs (approx 8 mos)

Tuition: \$2,190 Other: \$2,920 (bks, equip & fees; estimate)

Interior Decorating Services

CLW

Experience a "hands-on" approach using design tools, materials and CAD software used in the industry. Prepare for a career as a kitchen and bath designer, color-consultant, home-staging designer and interior decorator.

Length: 1050 hrs (approx 11 mos)

Tuition: \$3,066 Other: \$2,758 (bks, equip & fees; estimate)

HEALTH SCIENCE

Phlebotomy

PHI

This class is designed to prepare students to become a professional phlebotomist, primarily drawing blood. After completion of the program a student may sit for the American Medical Technologist's exam to become a Registered Phlebotomy Technician (RPT).

Length: 165 hrs (approx 4 mos)

Tuition: \$481.80 Other: \$564 (bks, equip & fees; estimate)*

Phlebotomy-IET

PHI

This class is designed to prepare students to become a professional phlebotomist, primarily drawing blood. After completion of the program a student may sit for the American Medical Technologist's exam to become a Registered Phlebotomy Technician (RPT). This versatile program caters to GED and ESOL students, immigrants, and English language learners.

Length: 165 hrs (approx 4 mos) Tuition: \$481.80 Other: \$564 (bks, equip & fees; estimate)*

Practical Nursing

CLW

Train in the administration of treatments and medication in the care of the ill while gaining the skills and knowledge to successfully pass the State Licensing Exam and become a Licensed Practical Nurse.

Length: 1350 hrs (approx 15 mos)

Tuition: \$3,942 Other: \$3,586 (bks, equip & fees; estimate)

HOSPITALITY

Baking & Pastry Arts

CLW

Learn about making breads, bakery goods, creams/mousses, chocolate and sugar applications. Formal dining desserts and dessert displays. Prepares students for pastry cook/baker and pastry chef/head baker.

Length: 600 hrs (approx 6 mos)

Tuition: \$1,752 Other: \$2,190 (bks, equip & fees; estimate)

Fundamental Foodservice Skills

CLW

Train in essential culinary techniques, ingredient knowledge and kitchen safety. Program focuses on hands-on learning, encouraging creativity and innovation while emphasizing the importance of mastering the fundamentals.

Length: 600 hrs (approx 6 mos)

Tuition: \$1,752 Other: \$2,230 (bks, equip & fees; estimate)

Professional Culinary Arts & Hospitality

CLW

Prepare for a variety of positions in the culinary industry including dining room operations, beverage management, steward, utility cook, breakfast cook, line cook, and pastry baker.

Length: 1200 hrs (approx 12 mos)

Tuition: \$3,504 Other: \$3,250 (bks, equip & fees; estimate)

MANUFACTURING

Advanced Composites

CLW

This course will provide students with the foundational composite skills needed for prepreg lamination, vacuum infusion, adhesive bonding, and precision assembly. Students will learn composite layup, core fabrication, vacuum bagging, oven curing mold preparation, sanding, trimming with power tools, adhesive mixing, adhesive bonding, vacuum infusion, precision measurement, cosmetics, and non-destructive inspection.

Length: 600 hrs (approx 6 mos)

Tuition: \$1,752 Other: \$785 (bks, equip & fees; estimate)

Machining Technologies

CLW

Prepare for employment as a machinist/toolmaker. Learn Blueprint reading/measurement techniques and set up and operate lathe/grinder, milling machine, electrical discharge machine and computer numerically controlled machine (CNC) operator/programmer.

Length: 1500 hrs (approx 15 mos)

Tuition: \$4,380 Other: \$1,825 (bks, equip & fees; estimate)

Welding Technology

CLW

Prepare students for certification and employment as a welder in the fabrication and repair industry, as well as the construction industry, using Shielded Metal Arc Welding (stick), Gas Tungsten Arc Welding (TIG), Gas Metal Arc Welding (MIG), Flux-Core Arc Welding (FCAW) using varies thickness and materials.

Length: 1050 hrs (approx 11 mos)

Tuition: \$3,066 Other: \$2,764 (bks, equip & fees; estimate)

Welding Technology – Advanced

CLW

Prepare for certification and employment as an advanced welder in emerging welding industries, using Shielded Metal Arc Welding (SMAW), pipe fitting fabrication techniques, and advanced Gas Tungsten Arc Welding (GTAW) skills.

Length: 750 hrs (approx 8 mos)

Tuition: \$2,190 Other: \$2,523 (bks, equip & fees; estimate)

** Ineligible for Federal financial aid.*



CLW

Pinellas Technical College – Clearwater Campus

6100 154th Ave N, Clearwater, FL 33760

727.538.7167

PHI

Pinellas Technical College – Clearwater Campus

Pinellas High Innovation

1220 Palmetto St, Clearwater, FL 33755

727.298.1616 ext 2316

OPPORTUNITY

Starts Here.

Clearwater Campus

6100 154th Ave N,
Clearwater, FL 33760
727.538.7167



myptc.edu

Since 1962...

Pinellas Technical College's emphasis is on post-secondary education, focusing on over 40 exciting career areas and nearly 60 programs.

Pinellas Technical College also offers continuing education courses, life enrichment courses, and commercial training services through the Office of Workforce Innovation.

The Pinellas Technical College experience is rich with relevant, stimulating, and challenging career and technical education. Our network of more than 250 business and industry partners serve as advisors for our programs, ensuring they are preparing students for the needs of the current and future work force.

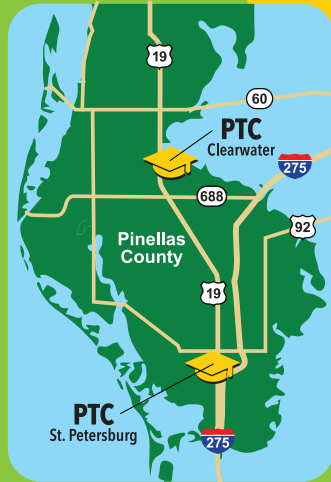
Each campus is individually accredited by the Council on Occupational Education and the Southern Association of Colleges

and Schools. Pinellas Technical

College is an alliance member of the Commission of International and Trans-Regional Accreditation. Most Pinellas Technical College programs are also individually accredited or approved by one or more professional accrediting bodies and licensing and certification agencies.

PTC has been a leader in providing career and technical education via distance learning. Through first-class training and support from our highly skilled faculty and staff, graduates are prepared to compete in a global job market.

We are committed to providing quality educational opportunities to meet our students' needs and the needs of business and industry. Employers throughout the Tampa Bay area recognize our Pinellas Technical College graduates as having the qualities, skills, and knowledge necessary for success on the job now and in the future.



Offering students first-rate career and technical education on both our Clearwater campuses.



Pinellas County Schools | www.pcsb.org | *The School Board of Pinellas County, Florida prohibits any and all forms of discrimination and harassment based on race, color, sex, religion, national origin, marital status, age, sexual orientation, or disability in any of its programs, services, or activities.*



ACCREDITATION:

Council on Occupational Education | www.council.org
7840 Roswell Road, Building 300, Suite 325
Atlanta, GA 30350 | 770.396.3898 | 1.800.917.2081

Cognia Global Commission | www.cognia.org
9115 Westside Parkway, Alpharetta, GA 30009
1.888.413.3669 (US) | 1.678.392.2285 (Intl)