

# FOLLOW YOUR PASSION

Whether your calling is in a clinical or nonclinical setting at {partner name}, you can make a difference and impact the future of healthcare through an online degree program from Walden, an accredited institution.

**WALDEN UNIVERSITY**  
EDUCATION FOR GOOD®

Explore more than 100 degree and certificate programs that can help set you on the path to achieving your career goals.

## AREAS OF STUDY INCLUDE:

### » Business Management

- › Master of Business Administration (MBA)
- › MS in Human Resource Management

### » Communication

### » Criminal Justice

### » Education

### » Health & Health Sciences

- › Doctor of Healthcare Administration (DHA)
- › Master of Public Health (MPH)

### » Nursing

- › Doctor of Nursing Practice (DNP)
- › Master of Science in Nursing (MSN)
- › Bachelor of Science in Nursing (RN-BSN) Completion Program

### » Psychology and Counseling

- › PhD in Clinical Psychology
- › MS in Clinical Health Mental Counseling

### » Public Policy & Administration

### » Social Work & Human Services

- › Doctor of Human Services
- › Master of Social Work (MSW)

### » Non-Degree Options

- › For-Credit Courses

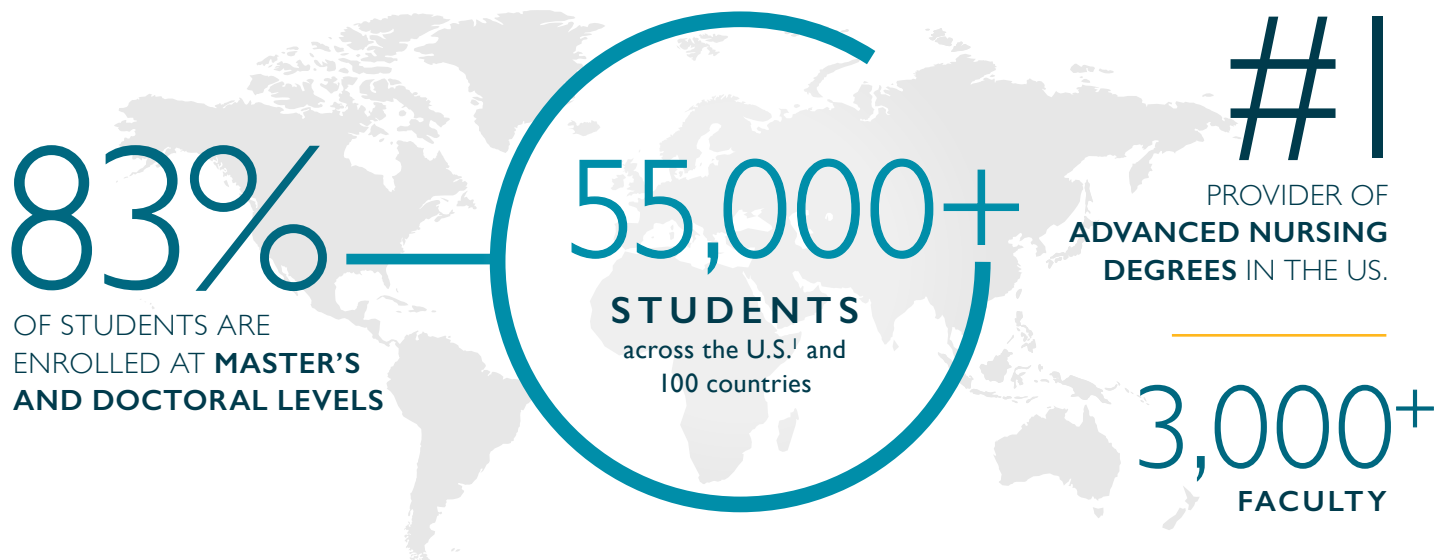
LEARN ABOUT WALDEN UNIVERSITY: 1-855-628-1499 | [Waldenu.edu/](https://Waldenu.edu/)



# WALDEN UNIVERSITY

## 50+ YEARS OF PROVIDING DISTANCE EDUCATION TO WORKING PROFESSIONALS

Our mission is to provide a diverse community of career professionals with the opportunity to transform themselves as scholar-practitioners so that they can effect positive social change.



By creating opportunities for diverse working adult learners to advance their education, Walden has helped generations of alumni blaze a trail for change in their professions and communities.

169,000+  
ALUMNI

OVER 50%

**Minorities** make up more than one half of our students.

#1

for awarding research doctorates to **African American students**.

OVER 75%

Of our students are **women**

## ACCREDITATIONS

Quality matters—especially when it comes to your education. Walden is accredited by The Higher Learning Commission and committed to maintaining the highest standards of excellence.



**SOCIAL WORK**  
Council on Social Work Education<sup>2</sup>



**EDUCATION**  
Council for the Accreditation of Educator Preparation<sup>3</sup>



**BUSINESS**  
Accreditation Council for Business Schools and Programs<sup>4</sup>



**PUBLIC HEALTH**  
Council on Education for Public Health<sup>5</sup>



**CCNE ACCREDITED**  
Commission on Collegiate Nursing Education<sup>6</sup>



**COUNSELING**  
Council for Accreditation of Counseling and Related Educational Programs<sup>7</sup>

# 100+

## DEGREE AND PROGRAM OPTIONS

Walden has more than 100 degree and certificate programs that meet your needs—and the moment.

- **Business and Management Programs**
  - *Bachelor of Business Administration*
  - *MS in Human Resource Management*
  - *Master of Business Administration (MBA)*
- **Communication Programs**
  - *BS in Communication*
- **Counseling and Psychology Programs**
  - *MS in Clinical Mental Health Counseling*
  - *PhD in Clinical Psychology*
- **Criminal Justice Programs**
  - *BS in Criminal Justice*
- **Education Programs**
  - *Bachelor's Degree in Elementary Education*
  - *MS in Education*
  - *Doctor of Education (EdD)*
- **Health and Health Sciences Programs**
  - *BS in Public Health*
  - *Master in Healthcare Administration*
  - *Master of Public Health*
  - *Doctor of Healthcare Administration*
- **Nursing Programs**
  - *Bachelor of Science in Nursing (RN-BSN)*
  - *Master of Science in Nursing (MSN)*
  - *Doctor of Nursing Practice (DNP)*
  - *PhD in Nursing*
- **Public Policy & Administration**
  - *Master of Public Administration*
  - *PhD in Public Policy and Administration*
- **Social Work & Human Services Programs**
  - *Bachelor of Social Work*
  - *Master of Social Work*
  - *Doctor of Social Work*
- **And MORE!**

## DIFFERENT WAYS TO LEARN:

### Course-Based Learning

For students who prefer an instructor-led approach and learning on a predetermined schedule.

### Tempo Learning®

For students who prefer a flexible learning experience with no set weekly deadlines, allowing them to make progress at their own pace.

## 600+

### PARTNER ORGANIZATIONS

Walden partners with hundreds of employers and associations all around the world.



<sup>1</sup>Walden is unable to accept applications from residents of New York and Rhode Island.

<sup>2</sup>Walden University's Bachelor of Social Work (BSW) and Master of Social Work (MSW) are accredited by the Council on Social Work Education (CSWE), a specialized accrediting body recognized by the Council for Higher Education Accreditation (CHEA). CSWE's Commission on Accreditation is responsible for developing standards that define competent preparation for professional social workers and ensuring that social work programs meet these standards.

<sup>3</sup>Walden University's Richard W. Riley College of Education and Human Sciences is accredited by the Council for the Accreditation of Educator Preparation (CAEP) for a period of seven years, from April 2019 through June 2026. This accreditation covers initial teacher preparation programs and advanced educator preparation programs. CAEP is the only recognized national accreditor for educator preparation, promoting excellence in educator preparation through quality assurance and continuous improvement. The Richard W. Riley College of Education and Human Sciences earned CAEP accreditation by meeting rigorous national standards and demonstrating excellence in the areas of content and pedagogy, clinical experiences, selectivity, program impact, and capacity for continuous improvement.

CAEP accreditation is based on a review of The Richard W. Riley College of Education and Human Sciences' initial teacher preparation programs—the BS in Elementary Education and the Master of Arts in Teaching with a specialization in Special Education—and advanced educator preparation programs—the EdS in Educational Leadership and Administration and the MS in Education with a specialization in Educational Leadership and Administration. Three of these programs were reviewed by Specialized Professional Associations (SPAs), which defines content-area standards for programs, and achieved national recognition: Master of Arts in Teaching with a specialization in Special Education, EdS in Educational Leadership and Administration, and MS in Education with a specialization in Educational Leadership and Administration.

<sup>4</sup>The Accreditation Council for Business Schools and Programs (ACBSP), which is recognized by the Council for Higher Education Accreditation (CHEA), is a leading specialized accreditation association that identifies and supports excellence in business education worldwide. Walden University's BS in Business Administration, Master of Business Administration (MBA), Doctor of Business Administration (DBA), and PhD in Management programs are accredited by ACBSP. Walden's BS in Accounting and MS in Accounting programs are also accredited by ACBSP and have earned the organization's Specialized Accounting Accreditation.

<sup>5</sup>The Council on Education for Public Health (CEPH) Board of Councilors acted at its September 6, 2019, meeting to accredit the Master of Public Health (MPH) program at Walden University for a five-year term, based on an application for accreditation submitted on February 3, 2018. On June 5, 2020, the CEPH Board of Councilors accredited the Doctor of Public Health (DrPH) program at Walden University, after reviewing an accreditation application submitted on April 21, 2020. Based on CEPH procedures and the documentation submitted, the effective accreditation date of both of these programs is February 3, 2018. CEPH is an independent agency recognized by the U.S. Department of Education to accredit schools of public health and programs of public health. CEPH accreditation provides assurance that the program has been evaluated and met accepted public health profession standards in practice, research, and service. For a copy of the final self-study document and/or final accreditation report, please contact the dean of the College of Health Sciences and Public Policy (adchhealth@mail.waldenu.edu).

<sup>6</sup>The baccalaureate degree program in nursing (BSN), master's degree program in nursing (MSN), post-graduate APRN certificate program, and Doctor of Nursing Practice (DNP) program at Walden University are accredited by the Commission on Collegiate Nursing Education ([www.ccnaccreditation.org](http://www.ccnaccreditation.org)).

<sup>7</sup>Council for Accreditation of Counseling and Related Educational Programs (CACREP)—Walden's PhD in Counselor Education and Supervision; MS in Clinical Mental Health Counseling; MS in School Counseling; MS in Marriage, Couple, and Family Counseling programs are accredited by the Council for Accreditation of Counseling and Related Educational Programs (CACREP), a specialized accrediting body recognized by the Council for Higher Education Accreditation (CHEA). CACREP accreditation ensures that the content and quality of counselor preparation master's and doctoral degree programs have been evaluated and meet standards set by the profession.