



YOUR PCS BENEFIT WEEKLY UPDATE

September 14, 2023

BENEFIT NEWS

State provides Educators Professional Liability Insurance for Instructional Personnel

Pinellas County Schools' general liability insurance covers *all* employees from claims arising from alleged "wrongful acts" under certain terms and conditions. The state also provides full-time instructional personnel with \$2 million of Educators Professional Liability Insurance. The district's coverage is the primary coverage and the state's coverage will apply if claims exceed PCS coverage limits. Employees do not have to enroll to be covered by the district's plan, and instructional staff do not have to enroll to be covered under the state's plan-- these coverages are automatic. Additional information on this topic can be found on the [Pinellas County Schools' website](#).

2024 Annual Enrollment – Save the Date!

Mark your Calendars! Annual enrollment dates for 2024 benefits will be **October 11 – October 23, 2023**.

During this time, employees may enroll, change, or cancel their employee benefits for the coming year. The PCS BENEFlex Annual Enrollment material will be mailed to your home prior to October 11th. If you have moved recently, please verify your address to make sure it has been updated. It is important to have your correct address on file for you to receive Annual Enrollment information and benefit plan ID cards, if applicable. PCS employees may update their address through the PCS Employee Self Service (ESS) website. More information to come in the next few weeks.

Meet Your Aetna Representatives!

Welcome, Ashley Morehead!

Ashley is our new on-site Account Advisor at the Administration Building. She joined PCS on September 5th. She previously was a Case Manager Analyst and Team Lead for Aetna, working with clients at Long Term Skilled Care facilities. She also has experience working as a Case Manager, as well as a Medical Assistant.

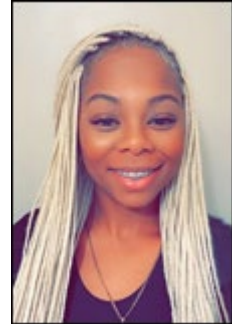
Her experience in the medical field and working at Aetna will be very helpful in her role. She will assist with Aetna coverage and benefits, explanation of benefits, review claims and billing, assist with eligibility inquires, in-network provider inquires, and spending account inquires.

Contact Information Below:

Office: 727-588-6367

Fax: 727-588-6182

Email: PCS.MOREHEAD@pcsb.org



Jessica O'Connell, RN, BSN

Jessica has been our On-site Wellness Representative for eight years as well as a Registered Nurse for 17 years. She currently collaborates with the PCS Employee Wellness Team on well-being initiatives and programs, oversees the PCS Diabetes Care Program, provides programs and resources for health promotion and chronic conditions, assists with Limeade (PCS Employee Wellness Program) questions and missing preventative screening points, as well as assisting with general Aetna related questions.

Contact Information Below:

Office: 727-588-6134

Fax: 727-588-6182

Email: PCS.OCONNELLJ@pcsb.org



WELLNESS NEWS

Looking to Lower or Monitor Your Blood Pressure?

Join the American Heart Association for a **FREE** 4-month program that will empower you to take charge of your heart health! 46% of US adults have high blood pressure and only 1 in 4 have their blood pressure under control. All PCS employees are eligible for this program. [Register today!](#)



All classes will be 6:00pm-7:00pm

Class 1	Wednesday, September 27	In-person meeting PCS Administration Building
Class 2	Wednesday, October 25	Virtual meeting
Class 3	Wednesday, November 15	Virtual meeting
Class 4	Wednesday, December 13	Virtual Meeting

FREE blood pressure cuff provided at first meeting! Limeade participants can earn 100 points for completing this program. Chance to win **\$100** grocery card when you participate in classes.

District Wide Wellness Webinars

Learn about a variety of wellness topics like mental health and nutrition through the fall Wellness Webinars. Participants can earn PLN credit and Limeade points for attending the live webinar. Participants must register through the links below, or by visiting [District Campaigns](#) for the full list of fall webinars. Webinars will be recorded and posted for 1 week after live class.



- September 20 – 5:30pm-6:40pm - *All Work & No Play: Avoiding Burnout* | EAP – [Registration](#)
- September 27 – 5:00pm-6:00pm – *Heart to Heart: The complete approach to heart health* | Nutrition - [Registration](#)

Diabetes Care Program

PCS Aetna members can join the revitalized PCS Diabetes Care Program today and receive free diabetic testing supplies. Contact Jessica O'Connell RN at pcs.oconnellj@pcsb.org or 727-588-6134 or visit pcsb.org/diabetes for more information.



Employee Assistance Program – September is Suicide Prevention & Awareness Month

There are often common warning signs that someone is thinking of suicide. If you or a loved one are having thoughts of hopelessness and are experiencing distress, *Resources for Living EAP*, offers in-the-moment support with a licensed counselor. They are available 24-hours per day. The [attached link](#) has articles on what to do if someone you know is having suicidal thoughts, and what parents need to know about teen suicide.



There is also a live webinar that you can register to attend on Tuesday, September 26, at 3 p.m. ET/ 12 p.m. PT. [Register here.](#)

Remember, the EAP is available 24/7 at 800-848-9392 to assist you with life coping skills.

EMPLOYEE DISCOUNT NEWS

Employee Discounts

Main employee discount page

Concerts & Events Discounts

Concerts and other event discounts through Amalie Arena and Yuengling Center

PerkSpot

Travel, theme park tickets, entertainment & local offers

[Company Code: PCSB](#)

Tickets at Work

Special offers like discounts on theme park tickets & more!

[Company Code: PCS](#)

