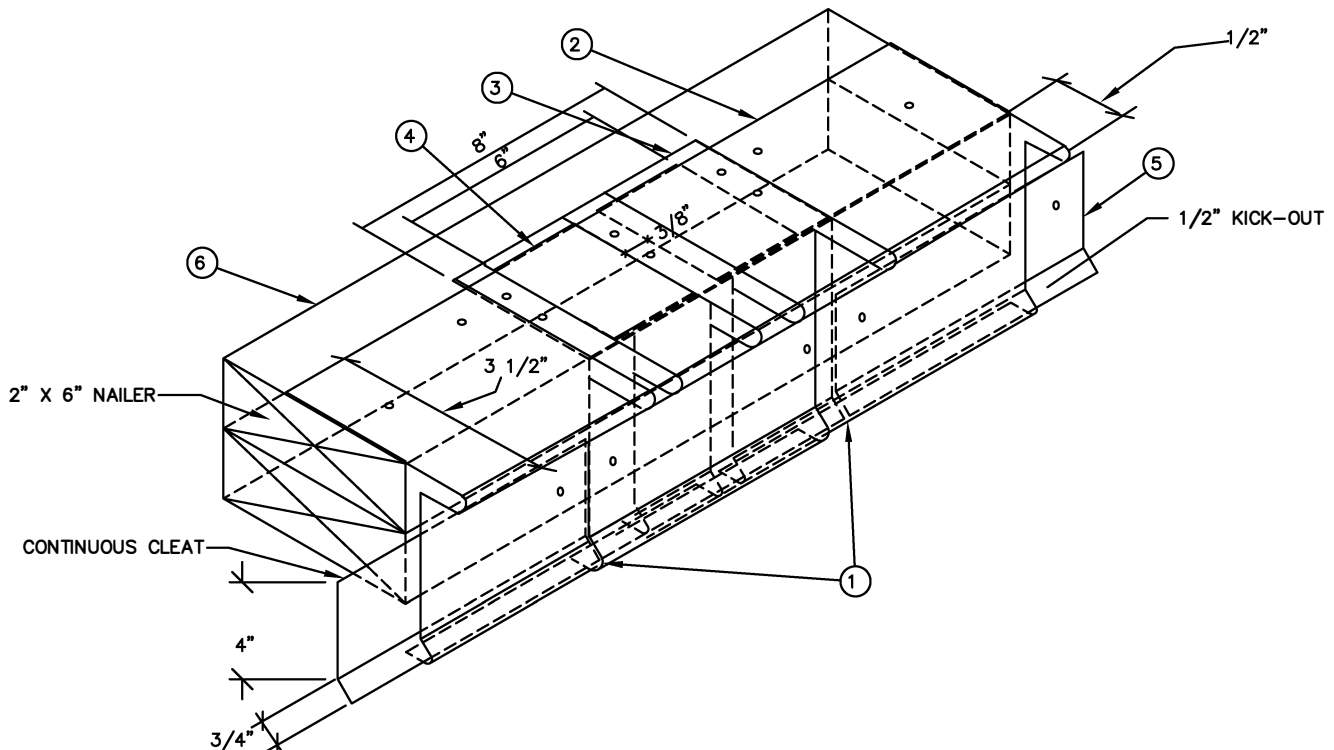


SPECIFICATIONS:

1. .050" MILL OR PRE FINISHED ALUMINUM FLOATING EAVE EDGE JOINT. JOINT EDGE MAXIMUM LENGTH 10 FEET WITH 3/8" SPACE IN BETWEEN.
2. EDGE METAL FLANGE TO BE NAILED 3" O.C. AND STAGGERED. KEEP NAILS BACK FROM EDGE 2". NAILS ARE NOT TO BE PLACED THROUGH EDGE METAL FLANGE UNDER COVER PLATE AREA. THIS IS THE FLOATING OR EXPANDING AREA OF THE JOINT.
3. BOTTOM JOINT PLATE TO BE 6" WIDE WITH 5" FLANGE PRIMED AND SET IN MASTIC AND SECURED WITH 6 NAILS EVENLY SPACED.
4. COVER PLATE TO BE 6" WIDE WITH 4" FLANGE SET IN TWO CONTINUOUS BEADS OF CAULKING ON EACH SIDE OF THE JOINT. PLACE 2 NAILS IN 3/8" SPACE BETWEEN EDGE METAL. APPLY URETHANE CAULK TO EDGE BEFORE INSTALLING. CRIMP BOTTOM SECURELY.
5. CONTINUOUS CLEAT ON ALL EDGE METAL.
6. PRESSURE TREATED 2"x 6" WOOD NAILER (S) MINIMUM TO MATCH INSULATION HEIGHT. NAILER TO BE SECURELY FASTENED TO DECK AND BE FLAT AND SMOOTH TO EDGE. STAGGER ALL JOINTS.
7. CORNERS ARE TO BE MITERED AND WELDED IN SHOP WITH EACH SIDE TO BE 18" LONG.
8. PA/E SHALL SPECIFY AND DETAIL FASTENING OF NAILERS TO BUILDING IN ACCORDANCE WITH CURRENT FLORIDA BUILDING CODE DESIGN CRITE M ASCE-7,EDA FACTORY MUTUAL AND U.L.



TITLE: FLOATING EAVE EDGE DETAIL

SPEC. SECTION: 07-60-00.02 APPENDIX B

DATE: 07/11/2019