

JAN 2021



East Lake Middle School Academy of Engineering

Principal Karen Huzar

1200 Silver Eagle Drive, Tarpon Springs, FL 34688 727-940-7624

1200 Silver Eagle Drive, Tarpon Springs, FL 34688 727.940.7624 [pcsb.org/Eastlake-ms](https://www.pcsb.org/Eastlake-ms)

PRINCIPAL'S MESSAGE

Superintendent of Schools:

Michael L. Grego, Ed. D

School Board:

Rene Flowers, Chairperson

Carol J. Cook, Vice Chair

Lisa N. Cane

Nicole M Carr, Ph.D

Bill Dudley

Joanne Lentino

Eileen M. Long

Principal:

Karen Huzar

Newsletter Editor:

David Reid

Happy New Year!

Mid-Terms will start Monday, January 11th. Please make sure your students take time to study for these mid-terms— most are 10% of their semester grade. All students have been given study guides for each of the classes that they have a mid-term in.

Students should have their laptops and headphones/earbuds with them everyday.

Do you have an 8th grader going to high school or a 5th grader that you'd like to apply

for middle school?

Don't forget that the application window is currently open until and will stay open until 5pm on Friday, January 15th. Below is the link for the District Application Programs.

<https://www.pcsb.org/Page/837>

Next semester starts on Wednesday, January 20th. Please note students do not have school on Monday and Tuesday, January 18th-19th.

Lastly, every month we have School Advisory



Council (SAC) meetings. All meetings are virtual and everyone is welcome to join us. Please find the link for the meeting on page 3 of this newsletter. Our next meeting is scheduled for Tuesday, January 12th at 8am. Hope to see you there.

NURSES CORNER

Greetings Eagles. Please remember to wear your masks, wash your hands often, and stay home if you're not feeling well.

If you have any school health questions you may reach out to me at garnert@pcsbs.org.

January's Caught Being Awesome Kid is Cash Crawford! He's a kind soul who takes care of his fellow students.

Ms. Wisdom, our school counselor, said, "Cash noticed a student struggling with his school supplies and running late to class. Cash stayed behind to make sure the student got through the classroom door and into class."



January 2021

Sun	Mon	Tue	Wed	Thu	Fri	Sat
					1	2
3	4 A	5 B	6 A	7 B Write Score	8 A	9
10	11	12 SAC https://bit.ly/2Gddt5Q	13	14	15 B	16
	Mid-Term Testing					
17	18	19	20 A	21 B	22 A	23
	No School					
24	25 B	26 A	27 B	28 A	29 B	30
31						

January Student of the Month

6th Grade

7th Grade

8th Grade



Alexandra
Antaki



Jacob
Frizzle



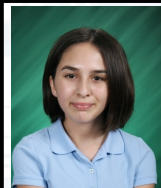
Rafael
Beltroy



Maksim
Puzenko



Tess
Purser



Chloe
Mossey



District
Application Period
Jan. 6th-Jan.15th

District
Acceptance Period
Feb. 15th– Feb. 26th

EAST LAKE MIDDLE SCHOOL ACADEMY OF ENGINEERING

SAC

Our next virtual
meeting is on
Tuesday, 01/12 @ 8AM.

<https://bit.ly/2Gddt6Q>

The **School Advisory Council** is a collective of stakeholders tasked with assisting the principal in developing & evaluating the results of the school improvement plan & the annual school budget. It's the responsibility of the SAC to help increase student success.

East Lake Middle School Academy of Engineering
1200 Silver Eagle Drive, Tarpon Springs, FL 34688 727.940.7624

PINELLAS COUNTY SCHOOLS FOOD & NUTRITION FREE MEAL DISTRIBUTION 18 YEARS & YOUNGER • 2020-2021 SCHOOL YEAR

Beginning on Thursday, October 29

DOES YOUR STUDENT NEED

VOLUNTEER HOURS?

- Starting Thursday, October 29, Free Meal Distribution will begin at select schools
- Adult Supervised
- School Police Present
- Contactless curbside pick up - placing food bags into vehicle trunks
- Contact the Cafeteria Manager at one of the following distribution sites:

PICKUP LOCATIONS

Elementary Schools:

4:30-6:30pm

Belleair El
Eisenhower El
Garrison Jones El
High Point El
Lakewood El
Sandy Lane El
Skyview El

Middle Schools:

5:00-7:00pm

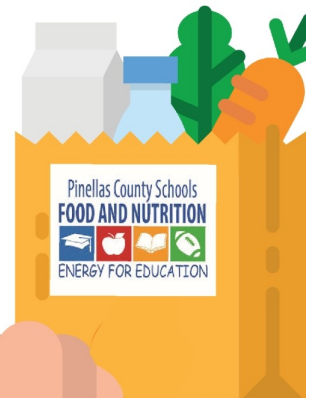
Azalea Middle
Bay Point Middle
Carwise Middle
Dunedin Middle
Fitzgerald Middle
Hopkins Middle
Lealman Innovation Academy
Madeira Beach Fund. Middle
Meadowlawn Middle
Oak Grove Middle
Osceola Middle
Palm Harbor Middle
Pinellas Park Middle
Safety Harbor Middle
Seminole Middle
Tarpon Middle
Thurgood Marshall
Tyrone Middle

High Schools:

4:30-6:30pm
Boca Ciega High
Countryside High
Dixie Hollins High
East Lake High
Largo High

Middle School Students - Hours can be used for volunteer hours.

High School Students - Hours may be counted for Bright Futures—be sure to complete a Bright Futures proposal & turn it into your high school community service designee for review.



VISION: 100% STUDENT SUCCESS
MISSION: EDUCATE AND PREPARE EACH STUDENT FOR COLLEGE, CAREER AND LIFE

EAST LAKE MIDDLE SCHOOL ACADEMY OF ENGINEERING

Donor Recognition

Gold



Silver



CALVARY
CHURCH



Eagle

THE BOUCHARD
FAMILY

THE ALES
FAMILY

EAST LAKE MIDDLE SCHOOL MID TERM EXAM SCHEDULE 2020 – 2020

		Monday – January 11th	
	9:40-11:25	Period 1 Exam	
	11:28-12:00	Period 3	
	Lunch 12:05 -12:35	1st LUNCH - 6th & 7th grade	
	Lunch 12:45 -1:15	2nd LUNCH - 8th grade	
	12:05-12:40	Period 4 - 8th grade	
	12:40 – 1:15	Period 4 - 6th & 7th grades	
	1:20 – 3:05	Period 2 Exam	
	3:10 - 4:10	Period 5	
		Tuesday – January 12th	
9:40-11:25	Period 3 Exam	9:40-11:25	Period 5 Exam
11:28-12:00	Period 6	11:28-12:00	Period 2
Lunch 12:05 -12:35	1st LUNCH - 6th & 7th grade	Lunch 12:05 -12:35	1st LUNCH - 6th & 7th grade
Lunch 12:45 -1:15	2nd LUNCH - 8th grade	Lunch 12:45 -1:15	2nd LUNCH - 8th grade
12:05-12:40	Period 7 - 8th grade	12:05-12:40	Period 3 - 8th grade
12:40 – 1:15	Period 7 - 6th & 7th grades	12:40 – 1:15	Period 3 - 6th & 7th grades
1:20 – 3:05	Period 4 Exam	1:20 – 3:05	Period 6 Exam
3:10 - 4:10	Period 1	3:10 - 4:10	Period 4
		Wednesday – January 13th	
		9:40-11:25	Period 5 Exam
		11:28-12:00	Period 2
		Lunch 12:05 -12:35	1st LUNCH - 6th & 7th grade
		Lunch 12:45 -1:15	2nd LUNCH - 8th grade
		12:05-12:40	Period 3 - 8th grade
		12:40 – 1:15	Period 3 - 6th & 7th grades
		1:20 – 3:05	Period 6 Exam
		3:10 - 4:10	Period 4
		Thursday – January 14th	
9:40-11:25	Period 7 Exam		
11:28-12:00	Period 5		
Lunch 12:05 -12:35	1st LUNCH - 6th & 7th grade		
Lunch 12:45 -1:15	2nd LUNCH - 8th grade		
12:05-12:40	Period 6 - 8th grade		
12:40 – 1:15	Period 6 - 6th & 7th grades		
1:20 – 2:15	Period 7		
2:20 – 3:15	Period 1		
3:20 – 4:10	Period 2		