

WELCOME!

to

OPEN HOUSE!





# COMMUNICATION

## TIGER BINDER

The Tiger Binder contains many resource pages for you to use at home to enrich the learning potential of your child.

It also contains the planner where you will sign each night with your first initial and full last name on the right-hand side and complete the reading log on the left-side Monday, Tuesday, Wednesday, and Thursday evenings.





# HOMework

Used to reinforce skills taught in class. Nightly reading log: read 15-20 minutes a night and record title and minutes in student planner on the left side. ("Just Right" Book Baggies are coming home soon.)

Planners must be reviewed and signed each night and returned the next day.

Friday folders go home every Friday for parent review and signature; return on Monday.

Please review for quality and completeness before signing homework. Practice tying shoes every night!





# MATH

**Math homework given Monday – Thursday.**

**Math homework goes home on Monday attached to the Weekly Update.**

**Please complete homework as indicated on the Weekly Update schedule. You will remove the homework from the back of the packet each night. Math homework will need to be reviewed at home and signed.**



# CODE OF CONDUCT

## FUNDAMENTAL POLICIES

- Written warnings are given when homework, planner, and/or Friday folder are not returned and/or signed.
- **Remember:** Students will receive a letter for wearing clothes which do not conform to the student dress code. Students receiving 3 dress code violations within an infraction period will receive a written warning. (March 2026 calendar page)
- Parents are required to attend monthly PTA meetings as well as parent conferences three times a year.

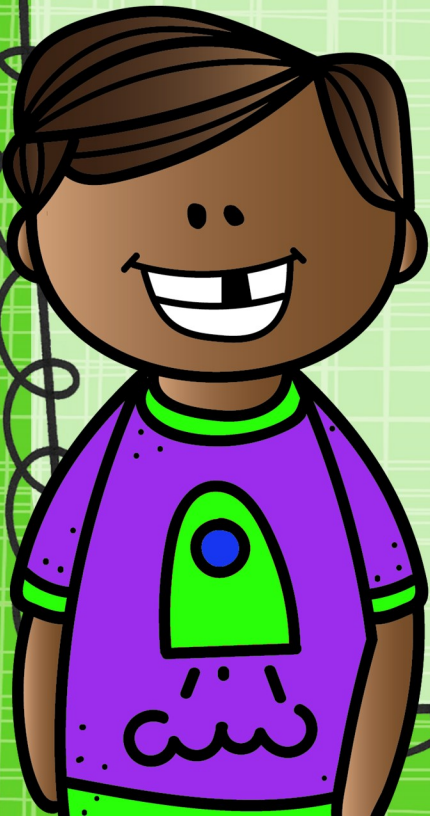




# IMPORTANT DATES

## SAVE THE DATE

**Parent Teacher Conferences will be held on Friday, September 19. This is a non-school for students. Please be on the look-out for an email with a Sign Up Genius link to sign up for your conference.**





# EXPECTATIONS

## For Teachers:

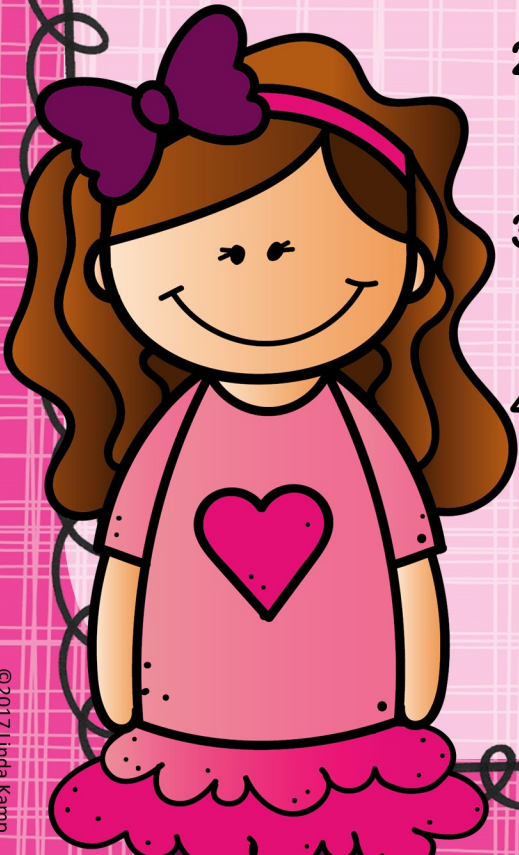
1. Follow curriculum
2. Plan well for students
3. Treat students fairly
4. Communicate with parents and students

## For Parents:

1. Show interest in all phases of child's education and school
2. Support teachers – email if there's a problem
3. Please check homework and sign the planner

## For Students:

1. Work to their potential
2. Follow all the rules
3. Treat others with respect
4. Take home communications
5. Follow the dress code





# BEHAVIOR MANAGEMENT

- Individual classroom management system in place – see Continuum of Engagement
- Red paw tickets awarded for great choices
- Communicate with parents through the planners
- Warning slips for repeated behavior offenses after multiple verbal reminders
- Please support your teacher's efforts to build character and responsibility in your child

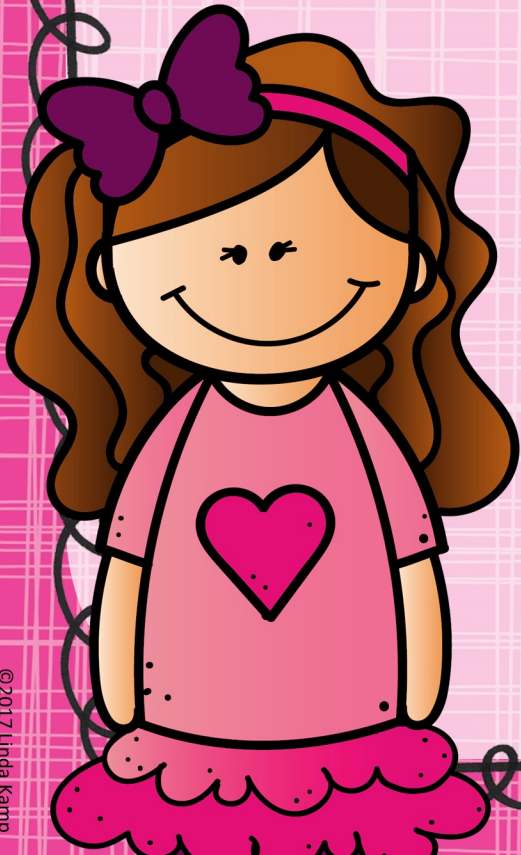




# DAILY SCHEDULE

|                           |               |
|---------------------------|---------------|
| ELA (reading and writing) | 8:05 – 10:20  |
| Recess                    | 10:20 – 10:40 |
| Lunch                     | 10:40 – 11:10 |
| Science                   | 11:10 – 11:40 |
| Specials                  | 11:40 – 12:25 |
| Intervention              | 12:30 - 1:00  |
| Math                      | 1:05 – 2:15   |
| Dismissal                 | 2:15          |

\* Social Studies is integrated throughout the week.





# SPECIALS

Mrs. Bodolay

Monday:

Tuesday:

Wednesday:

Thursday:

Friday:

P.E.

Music

Art

P.E.

P.E.

Ms. McConville:

Monday:

Tuesday:

Wednesday:

Thursday:

Friday:

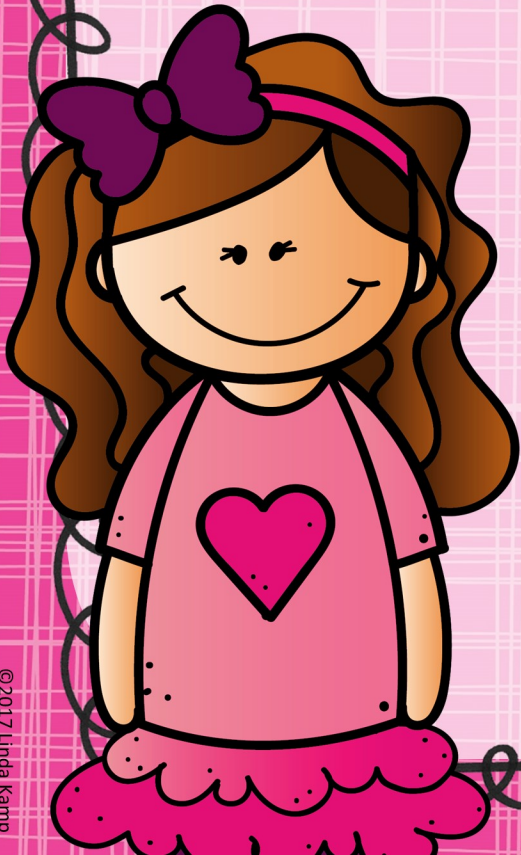
P.E.

P.E.

Music

P.E.

Art





# ASSESSMENT

STAR Reading and STAR Math computer-based assessments will be administered three times: fall, winter and spring.

Monthly Amira reading computer-based assessment.

Writing assessments are two county assessments given in fall and spring.

Running records and ELFAC (Early Literacy Formative Assessment Check) will be given three times a year.

Science assessments are three county assessments given in fall, winter and spring





# LANGUAGE ARTS

- Reading, Vocabulary, UFLI (phonics), and Writing
- Use running records for students' reading levels and have them read "just right" books
- Combination of whole class, small group, partner and independent reading
- Writing types covered are narrative, informational and opinion
- Amira to be utilized at school for 30-40 minutes per week. Please also support the use of Amira at home.



# MATH

Instructional time will emphasize four main areas:

- (1) Understanding the place value of tens and ones within two-digit whole numbers;
- (2) Extending understanding of addition and subtraction and the relationship between them;
- (3) Developing an understanding of measurement of physical objects, money, and time; and
- (4) Categorizing, composing and decomposing geometric figures.

Dreambox online math – 5 lessons per week is the goal  
Dreambox is available on Clever for at home use.



# SCIENCE

**Life, Physical and Earth Science Modules**

**Learn through hands-on experiments, multimedia lessons, and student science journals.**

**Students expected to write in their journals routinely to reflect on the essential questions, record findings and practice note-taking.**



# GRADING POLICY

## Florida Scale

|               |   |
|---------------|---|
| • 90-100      | E |
| • 80-89       | V |
| • 70-79       | S |
| • 60-69       | N |
| • 59 or below | U |

- 4 report cards per year
- Please check FOCUS online regularly to check your child's progress and view their grades.





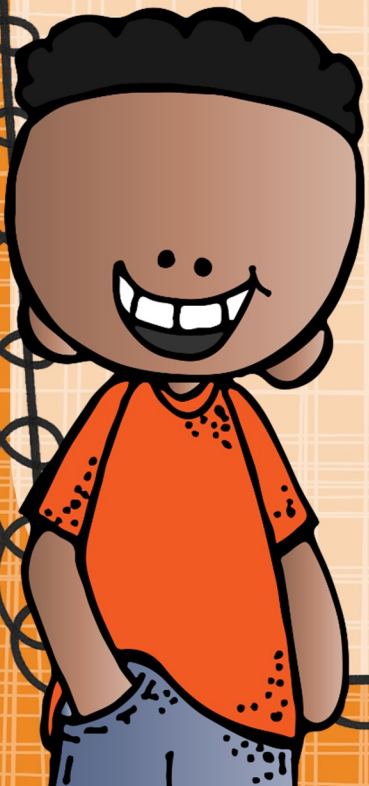
# VOLUNTEERS

If you are interested in any of the following, please email your student's teacher tonight:

- Room parent
- Friday folder volunteer
- Helping with the end-of-year student portfolio
- Tearing out math pages
- Other classroom jobs

[Bodolayt@pcsb.org](mailto:Bodolayt@pcsb.org)

[McConvilles@pcsb.org](mailto:McConvilles@pcsb.org)





# HOME-SCHOOL connection

Email works best. I will respond within 24 hours. We will primarily communicate through FOCUS.

Weekly Update will share curriculum information, school events and homework for the upcoming week.

Write a note in the planner on the left side under the reading log.

There will be three required parent/teacher conferences (September/October, January and May).

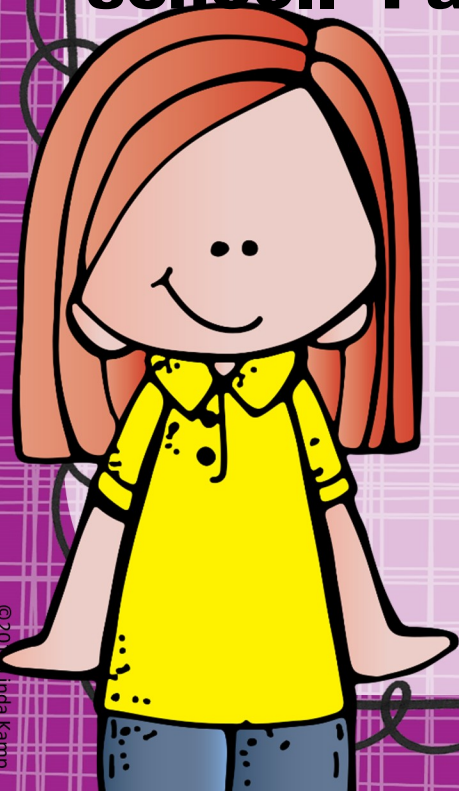




# SPECIAL EVENTS

**A Florida law was passed to encourage schools to assist with nutritional health issues facing our students. Therefore, we no longer acknowledge students' birthdays with food. As per Florida State Law, NO birthday invitations may be distributed at school. Parents are requested not to bring food items, flowers, balloons, or other gifts for birthday celebrations.**

**School directory is coming out soon.  
Please inquire at the front office.**



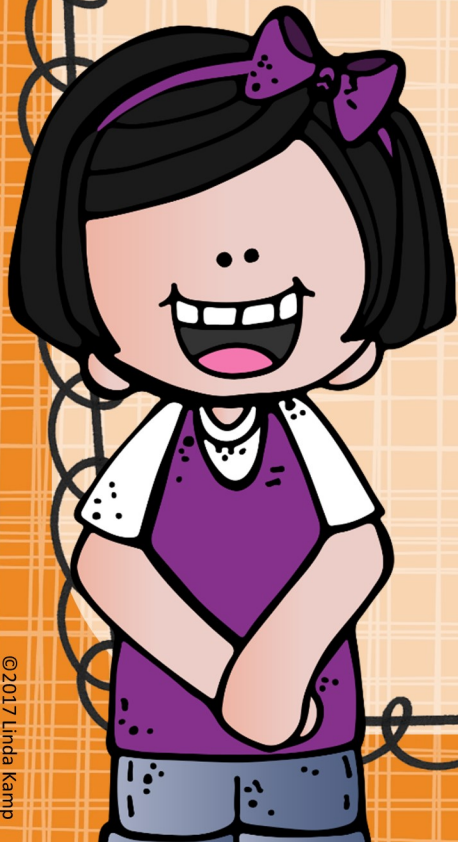


ways you can

# SUPPORT OUR CLASSROOM

**We always need extra headphones in the classroom (USB, USB-C, or 3.5mm).**

**Please consider donating extra new or gently used headphones. Thank you.**





THANK YOU!

