



FACT SHEET Preliminary



PROCESSOR NAME: Pilgrim's Pride Corp. - Gold Kist Farms Brand

PRODUCT NAME: A+ CN Whole Grain Chicken Breast Tenderloins

CODE NUMBER: 7572 Case Wt.: 30# Donated Food/Case 26.0492 Standard Yield 115%

Servings/Case: 106 SERVING SIZE: 4.5 OZ. 3-1.5oz tenderloin=1 serv. Contribution: 2 M/MA Serv. 1 Grain Serving*
*Calculation for grains based on 16 grams creditable per ounce.

UPC Code: _____ Gr. Cs. Wt.: _____ Case Cube: _____ Case Dim: _____ Pallet: -T x -H Cs/Pallet: -- Shelf Life 365 days



BID DESCRIPTIONS

Fully Cooked Whole Grain Breaded Chicken Breast Tenderloins from our A+ line of portioned chicken products provides the bite of whole muscle chicken but with a more consistent size, weight and shape. That translates to better portion control and more consistent cooking times. Plus with no added starches or binders and a whole grain breading profile, these items meet your nutritional requirements while delivering the flavor your students crave. One 4.5 oz. serving consists of (3) 1.5 oz. tenderloins.

NUTRIENT INFORMATION

Basic Components

Calories (kcal)	214	Carbohydrates (g)	18
Fat (g)	7	Dietary Fiber (g)	3
Saturated Fat (g)	2	Total Sugars (g)	0
Trans Fatty Acid (g)	0	Protein (g)	20
Cholesterol (mg)	50	Whole Grain (g)	

Vitamins

Vitamin A-IU (IU)	218
Vitamin C (mg)	1

Minerals

Sodium (mg)	452
Calcium (mg)	17
Iron (mg)	1

Jack Crawford Director of School Foodservice

10/15/16

Date

Primary Production Plant-Waco, TX



FLOWERS FOODS

Nutrition Facts Panel Information

Net Wgt/Pkg (oz)

24

lbs	ozs
1	8

680 <= gms

Nutrition Code #

1877

ROLL, 51 WHOLE GRAIN DINNER

Panel #

1

Nutrn-Panel #

187701

Panel Approval Date

04/17/17

FDA Reference Amount (g)

50

Nutrition Panel Claim

Panel Comments

Nutrition Facts

24 Servings per container

Serving Size 1 Roll (28 g/ 1.0 oz)

Amount per serving

Calories

70

% DAILY VALUE *

Total Fat	1 g	1 %
Saturated Fat	0 g	0 %
Trans Fat	0 g	
Polyunsaturated Fat	0.5 g	
Monounsaturated Fat	0 g	
Cholesterol	0 mg	0 %
Sodium	150 mg	6 %
Total Carbohydrate	13 g	5 %
Dietary Fiber	1 g	4 %
Total Sugars	1 g	
Includes	1 g Added Sugars	2 %
Protein	3 g	
Vitamin D	0 mcg	0 %
Calcium	40 mg	4 %
Iron	0.7 mg	4 %
Potassium	0 mg	0 %

* The % Daily Value (DV) tells you how much a nutrient in a serving of food contributes to a daily diet. 2,000 calories a day is used for general nutrition advice.

***** Please note this is not a camera ready format *****

Current	Replaces
02/11/14	08/26/11

FLOWERS FOODS

Ingredient Statement

Nutrn Code **1877**

Product: **ROLL, 51% WHOLE GRAIN DINNER**

%	INGREDIENT LABELING INFORMATION
1	WATER
2	WHOLE WHEAT FLOUR
3	ENRICHED FLOUR (WHEAT FLOUR, MALTED BARLEY FLOUR, NIACIN, REDUCED IRON, THIAMIN
4	HIGH FRUCTOSE CORN SYRUP
5	WHEAT GLUTEN
6	YEAST
7	CONTAINS 2% OR LESS OF EACH OF THE FOLLOWING:
8	SOYBEAN OIL
9	SALT
10	DOUGH CONDITIONERS (CONTAINS ONE OR MORE OF THE FOLLOWING: SODIUM STEAROYL LACTYLATE, CALCIUM STEAROYL LACTYLATE, MONOGLYCERIDES, MONO- AND DIGLYCERIDES, CALCIUM PEROXIDE, CALCIUM IODATE, DATEM, ETHOXYLATED MONO- AND DIGLYCERIDES, ENZYMES, ASCORBIC ACID)
11	MONOCALCIUM PHOSPHATE
12	AMMONIUM SULFATE
13	WHEAT STARCH
14	CALCIUM SULFATE
15	SOY LECITHIN
16	CALCIUM PROPIONATE (TO RETARD SPOILAGE)



Formula Statement for Documenting Grains in School Meals

Required Beginning SY 2013-2014

(Crediting Standards Based on Grams of Creditable Grains)

School Food Authorities (SFAs) should include a copy of the label from the purchased product package in addition to the following information on letterhead signed by an official company representative. Grain products may be credited based on previous standards through SY 2012-2013. The new crediting standards for grains (as outlined in Policy Memorandum SP 30-2012) must be used beginning SY 2013-2014. SFAs have the option to choose the crediting method that best fits the specific needs of the menu planner.

Product Name: BIDBUSINESS 51% 24 WHL GRN RCH DNR ROLL Code No.: 13740680

Manufacturer: FLOWERS FOODS Serving Size 1 Roll (28 g/ 1.0 oz)
(raw dough weight may be used to calculate creditable grain amount)

I. Does the product meet the Whole Grain-Rich Criteria: Yes X No _____
(Refer to SP 30-2012 Grain Requirements for the National School Lunch Program and School Breakfast Program.)

II. Does the product contain non- creditable grains: Yes X No _____ How many grams: 0.01
(Products with more than 0.24 oz equivalent or 3.99 grams for Groups A-G or 6.99 grams for Group H of non-creditable grains may not credit towards the grain requirements for school meals.)

III. Use Policy Memorandum SP 30-2012 Grain Requirements for the National School Lunch Program and School Breakfast Program: Exhibit A to determine if the product fits into Groups A-G (baked goods), Group H (cereal grains) or Group I (RTE breakfast cereals). (Different methodologies are applied to calculate servings of grain component based on creditable grains. Groups A-G use the standard of 16 grams creditable grain per oz eq; Group H uses the standard of 28 grams creditable grain per oz eq; and Group I is reported by volume or weight.)

Indicate to which Exhibit A Group (A-I) the Product Belongs: B

Description of Creditable Grain Ingredient*	Grams of Creditable Grain Ingredient per Portion ¹	Gram Standard of Creditable Grain per oz equivalent ²	Creditable Amount
	A	B	A ÷ B
WHOLE GRAIN	8.79	16	↓
ENRICHED GRAIN	8.24	16	
			1.06
Total Creditable Amount³			1.00

*Creditable grains are whole-grain meal/flour and enriched meal/flour.

¹(Serving size) X (% of creditable grain in formula). Please be aware serving size other than grams must be converted to grams.

²Standard grams of creditable grains from the corresponding Group in Exhibit A.

³Total Creditable Amount must be rounded *down* to the nearest quarter (0.25) oz eq. Do *not* round up.

Total weight (per portion) of product as purchased 28 grams

Total contribution of product (per portion) 1.00 oz equivalent

I certify that the above information is true and correct and that a 1.0 ounce portion of this product (ready for serving) provides 1.00 oz equivalent Grains. I further certify that non-creditable grains are not above 0.24 oz eq. per portion. Products with more than than 0.24 oz equivalent or 3.99 grams for Groups A-G or 6.99 grams for Group H of non-creditable grains may not credit towards the grain requirements for school meals.

Tracy Osgatharp

Signature

QA Labeling Associate

Title

Tracy Osgatharp

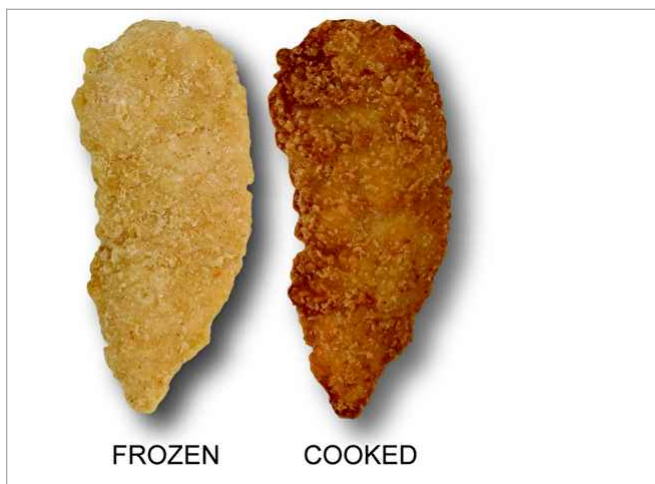
Printed Name

03/24/17

Date

229 227-2015

Phone Number



GOLD KIST

Chicken

TENDERLOIN BREADED WHOLE-GRAIN-RICH SMALL SEASONED COOKED STRIP CH

4987879



6/5 LB

\$74.51 / CS

Product Description

Manufacturer: PILGRIMS PRIDE CORP, Mfr. Product # 7572

Additional Description

FLAT BREADED CHILD NUTRITION CERTIFIED TENDERLOIN STRIPS. FROZEN.

Ingredients

CHICKEN TENDERLOINS, WATER, SODIUM PHOSPHATES, REDUCED SODIUM SEA SALT (SEA SALT, POTASSIUM CHLORIDE, RICE FLOUR). BREADED WITH: WHOLE WHEAT FLOUR, ENRICHED WHEAT FLOUR(ENRICHED WITH NIACIN, REDUCED IRON, THIAMINE MONONITRATE, RIBOFLAVIN, FOLIC ACID), SALT, SUGAR, YEAST EXTRACT, DISODIUM INOSINATE AND DISODIUM GUANYLATE, SPICE, YEAST, EXTRACTIVES OF PAPRIKA, DEXTROSE, LEAVENING (SODIUM BICARBONATE, SODIUM ACID PYROPHOSPHATE, MONOCALCIUM PHOSPHATE), EXTRACTIVES OF PAPRIKA AND ANNATTO, EXTRACTIVES OF TURMERIC, LESS THAN 2% SOYBEAN OIL. BATTERED WITH: WATER, WHOLE WHEAT FLOUR, MODIFIED CORN STARCH, SALT, ENRICHED WHEAT FLOUR (ENRICHED WITH NIACIN, REDUCED IRON, THIAMINE MONONITRATE, RIBOFLAVIN, FOLIC ACID), SUGAR, LEAVENING (CALCIUM ACIDPYROPHOSPHATE, MONOCALCIUM PHOSPHATE, SODIUM BICARBONATE), SPICE, MALTODEXTRIN, SOYBEAN OIL (AS A PROCESSING AID), EXTRACTIVES OF PAPRIKA, ANNATTO AND TURMERIC, NATURAL BUTTER FLAVOR. PRE-DUSTED WITH: WHOLEWHEAT FLOUR, MODIFIED CORN STARCH, SALT, SPICE EXTRACTIVE. BREADING SET IN VEGETABLE OIL.

Preparation & Cooking

Preparations and Cooking Instructions

COOK TO AN INTERNAL TEMPERATURE OF 165F.

Handling Instructions

KEEP FROZEN.

Serving Suggestions:

ENTREE.

All product information contained herein is subject to change, including pricing, promotions and nutritional. For current information at the time of purchase, please contact your sales associate.



TENDERLOIN BREADED WHOLE-GRAIN-RICH SMALL SEASONED COOKED STRIP CH

GOLD KIST

6/5 LB

Manufacturer: PILGRIMS PRIDE CORP

4987879

\$74.51 / CS

Manufacturer Product #: 7572

Shipping Information:

Physical Attributes					
Gross Weight:	32.02 LB	Height:	11.44 IN	Length:	17 IN
Net Weight:	30 LB	Width:	13 IN	Cube:	1.463 CF
Catch Weight:	NO				

Storage Information	
Min. Temperature:	-10 FA
Max. Temperature:	15 FA



TENDERLOIN BREADED WHOLE-GRAIN-RICH SMALL SEASONED COOKED STRIP CH

GOLD KIST

6/5 LB

Manufacturer: PILGRIMS PRIDE CORP

4987879

\$74.51 / CS

Manufacturer Product #: 7572

Nutritional Facts	
Serving Size (123GR) Servings Per Container 110	
Amount Per Serving	
Calories 200	Calories from Fat 80
% Daily Value *	
Total Fat 9g	14%
Saturated Fat 1g	5%
Trans Fat 0g	
Cholesterol 50mg	17%
Sodium 380mg	16%
Total Carbohydrate 11g	4%
Dietary Fiber 0g	0%
Sugars 0g	
Protein 18g	
Vitamin A	4%
Vitamin C	2%
Calcium	2%
Iron	4%
* Percent Daily Values are based on a 2,000 calorie diet. Your daily values may be higher or lower depending on your calorie needs:	
	Calories 2,000 2,500
Total Fat	Less than 65g 80g
Sat Fat	Less than 20g 25g
Cholesterol	Less than 300mg 300mg
Sodium	Less than 2400mg 2400mg
Total Carbohydrate	300g 375mg
Dietary Fiber	25g 30mg
Supplemental Facts	
% Daily Value *	
<i>None Specified at this time</i>	
* Percent Daily Values are based on a 2,000 calorie diet. Your daily values may be higher or lower depending on your calorie needs.	

Allergens				
ALLERGEN	DOES NOT CONTAIN	CONTAIN	MAY CONTAIN	NO DATA
Crustacean				
Eggs				
Fish				
Gluten				●
Lactose				●
Milk		●		
Mustard				●
Peanuts				
Soy				
Tree nuts				
Wheat		●		

Nutritional Claims
<ul style="list-style-type: none"> This product has child nutrition certification This product is trans fat free

Nutritional Disclaimer
<p>US Foods, Inc. obtains nutritional information from claims made by the product manufacturer(s). Although we have made every effort to be as accurate as possible, manufacturers frequently change formulations and it may take some time to get our records updated to reflect these changes. We suggest you continue to read product labels as we cannot guarantee the information posted here is 100% accurate and current and as such cannot be responsible for individual reactions to any products listed here. In addition, any product images displayed are for reference only and may not reflect the most current packaging.</p> <p>When precise nutritional information is important, our data is not a substitute for reading the label on the products you purchase or for contacting the manufacturer directly for additional details.</p>