



# EAST LAKE MIDDLE SCHOOL ACADEMY OF ENGINEERING

Pinellas County Schools Website: [www.pcsb.org](http://www.pcsb.org)

ELMS Phone: (727)940-7624 / ELMS Website: [pcsb.org/Eastlake-ms](http://pcsb.org/Eastlake-ms)



## Inside this issue:

Principal's message.....	1
Students of the month.....	1
Schedule of Events.....	2
Second semester testing calendar.....	2
End of year assessments.....	3
End of year assessments.....	4
Final Exam Schedule.....	5
Caught Being Awesome.....	5
Message from Language Arts.....	6
A word from our nurse.....	7
Sponsors.....	8
School Grades.....	9

**Superintendent of Schools:**  
Michael L. Grego, Ed.D.

### School Board:

Rene Flowers Chairperson  
Carol J. Cook Vice Chair  
Lisa N. Cane  
Nicole M. Carr, Ph.D  
Bill Dudley  
Joanne Lentino  
Eileen M. Long

### Principal:

Karen Huzar

### Newsletter Editor

Karin David & Sarah Dobes

The end of the school year is near, but we still have work to be done. Parents please continue to check Focus and make sure your student is up to date on their work, especially if they have been absent lately. There is only 20 school days left and we have a very packed schedule, so it is imperative that students make it a priority to be at school and use their class time wisely. Most students are meeting this expectation and exceeding at it. The testing calendar is in this newsletter, please make sure that you look it over and make every attempt to not schedule appointments during these days. Please make sure that you look at the final exam schedule. Students will not have a final exam for every subject as many exams will have already been taken. Example a Geometry student will have already taken their Geo EOC, Civics students will have already taken their Civics EOC, etc. If you have questions, please reach out.

Lastly, our 8th grade end of the year activities reminders:

The PTA sponsored 8th grade Dance is on May 17th at Eastlake Woodlands. - tickets are still on sale May 1 and May 2, \$10 each

8th Grade Moving Up Ceremony - Formal invites went home on April 30th with your student.

May 28th at 6pm is the ceremony. Students are asked to arrive by 5:40pm to line up and all students should be dressed nicely. A rehearsal will take place on 5/28 after the 7th period final exam.

All 8th graders should be in attendance for rehearsal



Principal Karen Huzar

One other additional reminder to all parents, our last PTA General Meeting will take place on May 13th at 5:30pm. Please come on out, there are prizes and you get to meet our fabulous PTA parent team.

Finally, on the last day of school, May 29th students will have a early release and will be released at 2:10pm.

## MARCH STUDENTS OF THE MONTH

### 6<sup>TH</sup> GRADE



Emma Keaton

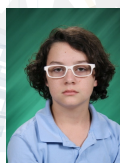


Billy Huzar

### 7<sup>TH</sup> GRADE



Skyler Devin



James Berg

### 8<sup>TH</sup> GRADE



Lauren Holthaus



Jaden Carlson

## SCHEDULE OF EVENTS

May 2019						
Sunday	Monday	Tuesday	Wednesday	Thursday	Friday	Saturday
			1 FSA Reading Test	2 FSA Reading Test	3	4
5	6 FSA Math Test	7 FSA Math Test	8	9 CIVICS EOC SCIENCE SSA	10 NJHS LUNCHEON (8 <sup>th</sup> grade) PTA Board Meeting	11
12 PTA General meeting	13	14 AWARDS CEREMONY	15	16 ALGEBRA EOC GEOMETRY EOC	17 Alg. & Geo. EOC 8 <sup>th</sup> grade dance East Lake Woodlands	18
19	20	21	22 FINAL EXAMS	23 FINAL EXAMS	24 FINAL EXAMS	25
26 NO SCHOOL	27	28 FINAL EXAMS ELMS Moving Up Ceremony (8 <sup>th</sup> grade)	29 LAST DAY STUDENTS – out at 2:10 p.m.	30 LAST DAY TEACHERS	31	

- May 1 & 2 - FSA Reading Test all grades
- May 6 & 7 - FSA Math Test - no algebra or geometry
- May 9 - Civics EOC exam - 7th grade
- May 9 - Science SSA exam - 8th grade
- May 10 - NJHS Luncheon (8th grade)
- May 10 - PTA Board meeting 8:00 a.m.
- May 13 - PTA General meeting 5:30
- May 14 - Awards Ceremony
- May 16 & 17 - Algebra EOC Exam
- May 16 & 17 - Geometry EOC Exam
- May 17 - 8th Grade Dance 7:00 - 10:00 p.m. East Lake Woodlands
- May 22, 23, 24, 28 - Final Exams
- May 27 - No School
- May 28 - Moving up Ceremony (8th grade)
- May 29 - Last Day School Students (released at 2:10 p.m.)
- May 30 - Last Day Teachers

## ELMS SECOND SEMESTER TESTING SCHEDULE

# 2019

JANUARY						
Sun	Mon	Tue	Wed	Thu	Fri	Sat
		1	2	3	4	5
6	7	8	9	10	11	12
13	14	15	16	17	18	19
20	21	22	23	24	25	26
27	28	29	30	31		

FEBRUARY						
Sun	Mon	Tue	Wed	Thu	Fri	Sat
					1	2
3	4	5	6	7	8	9
10	11	12	13	14	15	16
17	18	19	20	21	22	23
24	25	26	27	28		

MARCH						
Sun	Mon	Tue	Wed	Thu	Fri	Sat
					1	2
3	4	5	6	7	8	9
10	11	12	13	14	15	16
17	18	19	20	21	22	23
24	25	26	27	28	29	30
31						

**Mar. 4, 5, & 6 Cycle 3 Science GAP grade 8 only & Mar. 5 & 6 Civics**

**Mar. 21 & 22 Math cycle 3, EOC courses only**

**April 1 – FSA Writing All Students, all classrooms**

**April 29 & 30 SRI Reading cycle 3 ELA and Reading Classrooms**


**May 1 & 2 FSA Reading 2 days / all students / all classrooms**



**May 6 & 7 FSA Math all grades, various classrooms 2 days no Algebra or Geometry**

**May 9 – 8<sup>th</sup> Grade Science SSA & 7<sup>th</sup> grade Civics EOC – multiple classrooms**

**May 16 & 17 Algebra & Geometry EOC various classrooms 2 days**

**May 22, 23, 24 & 28 Final Exams – all grades in regular classrooms**

 = Special Observance Days – No Testing

APRIL						
Sun	Mon	Tue	Wed	Thu	Fri	Sat
	1	2	3	4	5	6
7	8	9	10	11	12	13
14	15	16	17	18		20
21	22	23	24	25		27
28	29	30				

MAY						
Sun	Mon	Tue	Wed	Thu	Fri	Sat
				1	2	3
5	6	7	8	9	10	11
12	13	14	15	16	17	18
19	20	21	22	23	24	25
26	27	28	29	30	31	

JUNE						
Sun	Mon	Tue	Wed	Thu	Fri	Sat
						1
2	3	4	5	6	7	8
9	10	11	12	13	14	15
16	17	18	19	20	21	22
23	24	25	26	27	28	29
30						

**East Lake Middle School  
FSA / ELA Reading Assessment  
Schedule 2018-2019**

	Wednesday – May 1st
9:40-11:30	Period 2 FSA READING SESSION ONE - all grades
11:34-12:06	Period 3
12:11-12:41	LUNCH
12:45-2:23	Period 5
2:27-4:10	Period 7

	Thursday – May 2nd
9:40-11:30	Period 1 FSA READING SESSION TWO - all grades
11:34-12:06	Period 3
12:11-12:41	LUNCH
12:45-2:23	Period 4
2:27-4:10	Period 6

Accommodations, alpha and room assignments on separate page

East Lake Middle School FSA Math  
Schedule **2018-2019**

	Monday - May 6th
9:40-11:15	FSA MATH SESSION ONE 6 <sup>th</sup> , 7 <sup>th</sup> & 8 <sup>th</sup> Grades Period 1 & 2 Testing NO Algebra or Geometry students
11:19-12:06	Period 3
12:11-12:41	LUNCH
12:45- 1:34	Period 4
1:38 - 2:26	Period 5
2:30 - 3:18	Period 6
3:22 - 4:10	Period 7

	Tuesday – May 7th
9:40-11:15	Period 1
11:19-12:06	Period 3
12:11-12:41	LUNCH
12:45-3:20	FSA MATH SESSIONS TWO & THREE 6 <sup>th</sup> , 7 <sup>th</sup> , & 8 <sup>th</sup> grades Period 4 Testing NO Algebra or Geometry students
3:24-4:10	Period 6

## East Lake Middle School CIVICS EOC & SCIENCE SSA Schedule Thursday, May 9, 2019

Thursday May 9th		
9:40-11:15	PERIOD 1	CIVICS EOC EXAM & SCIENCE SSA  7th & 8th grade only
11:19-12:06	PERIOD 3	
12:10-12:55	PERIOD 4	
1:00 - 1:30	LUNCH	
1:34 - 2:50	PERIOD 4 Continued	
2:54 - 4:10	PERIOD 6	

## East Lake Middle School Algebra & Geometry EOC Schedule 2018-2019

Thursday – May 16th	
9:40-12:06	<b>Periods 1 &amp; 3 ALGEBRA &amp; GEOMETRY EOC SESSION 1</b>
	<b>ALL STUDENTS NOT TESTING - REGULAR A DAY SCHEDULE</b>
12:11-12:41	<b>LUNCH</b>
12:45-2:23	<b>Period 4</b>
2:27-4:10	<b>Period 6</b>

Friday – May 17th	
9:40-12:06	<b>Periods 2 &amp; 3 ALGEBRA &amp; GEOMETRY SESSION TWO</b>
	<b>ALL STUDENTS NOT TESTING - REGULAR B DAY SCHEDULE</b>
12:11-12:41	<b>LUNCH</b>
12:45-2:23	<b>Period 5</b>
2:27-4:10	<b>Period 7</b>



**East Lake Middle School FINAL Exam  
Schedule 2018-2019**

	Wednesday – May 22nd
9:40-11:30	<b>Period 1 Exam</b>
11:34-12:06	Period 3
Lunch 12:11-12:41	LUNCH
12:45-2:23	Period 5
2:27-4:10	Period 7

	Thursday – May 23rd	Friday – May 24th	Tuesday – May 28th
9:40-11:30	<b>Period 2 Exam</b>	<b>Period 4 Exam</b>	<b>Period 6 Exam</b>
11:34-12:06	Period 4	Period 3	Period 3
Lunch 12:11-12:41	LUNCH	LUNCH	LUNCH
12:45-2:30	<b>Period 3 Exam</b>	<b>Period 5 Exam</b>	<b>Period 7 Exam</b>
2:34-3:22	Period 6	Period 2	Period 2
3:26-4:10		Period 1	Period 4

## CAUGHT BEING AWESOME

Each month one student is recognized as a student caught being awesome. This event is sponsored by the Lutheran Church of the Resurrection and The American Legion post 46. The winner each month is given a plaque and a \$25.00 check. This month, our winners were Jocelyn Charles and Connor Griffith.



Jocelyn Charles

Connor Griffith



### News from the English/Language Arts Department

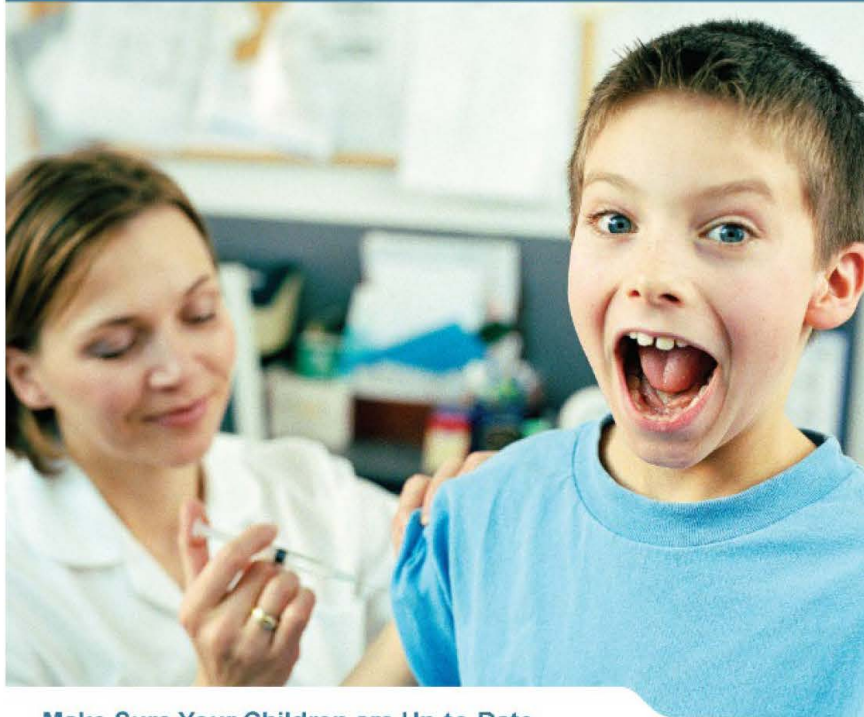
Greetings, families of rising 7th and 8th graders! As we're wrapping up the year, our thoughts turn to preparing students for next year! This assignment is a "first impression" we have of our incoming scholars. Students in Mrs. Clark's 6th grade classes and Mrs. Heeren's 7th grade classes will be receiving their summer reading assignments around the second week of May (tentative). They will also be posted on the ELMS website around that time. Should students have any questions, our emails are listed on the assignments and we encourage students to email us if the need arises. Please note that we will try to get back with students as soon as possible but it may take up to three days during the summer months, so please plan accordingly. We're looking forward to an exciting and productive year.

Regards,  
Mrs. Dobes (8th grade), Mrs. Heeren (7th grade), and Mrs. Clark (6th grade)





## Be Ready for 7th Grade



### Make Sure Your Children are Up-to-Date

Hello Parents of 6<sup>th</sup> graders. Did you know that all students entering 7<sup>th</sup> grade are required to receive the Tdap (Tetanus-diphtheria-pertussis) vaccine? This must be documented on an updated *Florida Certification of Immunization* (DH 680 form) and submitted to the school prior to the start of 7<sup>th</sup> grade. Most students can receive this vaccine now while in 6<sup>th</sup> grade, so please reach out to your Pediatrician or stop by your local Department of Health (no appointment necessary) to ensure there is no delay in entering class on the first day of the 19/20 school year. Protection from some early childhood vaccines can wear off. Review your child's immunization records with a health care provider to make sure all vaccines recommended for adolescents are up-to-date. Florida immunization requirements are found in the *Immunization Guidelines for Florida Schools, Childcare Facilities, and Family Daycare Homes*, which is incorporated by reference in Rule 64D-3.046, *Florida Administrative Code*.

Thank you,

Lorraine St. Leger BSN, RN

School Nurse for East Lake Middle & High School

[stlegerl@pcsb.org](mailto:stlegerl@pcsb.org)

District Cell # (727) 614-6099



## EAST LAKE MIDDLE SCHOOL ACADEMY OF ENGINEERING



# East Lake Middle School Academy of Engineering

Principal Karen Huzar

1200 Silver Eagle Drive, Tarpon Springs, FL 34688 727-940-7624

## GOLD SPONSOR

**ORTHOPEDIC  
SPECIALISTS**  
DRS SULLIVAN, MAIOCCO, MASER  
WILLIAMS, GRAVES & BROTHERTON  
727-938-1935 • 37026 US 19, PALM HARBOR • PALMHARBORORTHO.COM

**ORTHOPEDIC INJURY CARE**  
SPORTS INJURIES • FRACTURES  
DISLOCATIONS • SPRAINS/STRAINS  
ARTHRITIS • WORKERS COMP  
AUTO ACCIDENTS



## SILVER SPONSOR



**CALVARY**  
CHURCH



**HALULA FAMILY**

## EAGLE SPONSOR

**ALES FAMILY**

**PALMA FAMILY**

**LUNTER FAMILY**

**WORTHAM FAMILY**

**MISSION – 100% Student Success**

*VISION – East Lake Middle School Academy of Engineering  
will prepare students to be college and career ready and have the skills to compete in a global society.*

***Pinellas County Schools is an equal opportunity institution for education and employment.***





**2017-2018**

# School Grades



**EAST LAKE MIDDLE SCHOOL**



**Middle Schools in  
PINELLAS COUNTY**



**Middle Schools in the  
STATE OF FLORIDA**



## Top Five Middle Schools in Pinellas County, Florida

<b>1</b>	<i>East Lake Middle School Academy Of Engineering</i>
<b>2</b>	<i>Clearwater Fundamental Middle School</i>
<b>3</b>	<i>Thurgood Marshall Fundamental</i>
<b>4</b>	<i>Joseph L. Carwise Middle School</i>
<b>5</b>	<i>Palm Harbor Middle School</i>

## Top Ten Middle Schools in the State of Florida

<b>1</b>	<i>Doral Academy Of Technology</i>
<b>2</b>	<i>Archimedes Middle Conservatory</i>
<b>3</b>	<i>Okaloosa STEMM Center</i>
<b>4</b>	<i>Bak Middle School of the Arts</i>
<b>5</b>	<i>George Washington Carver Middle</i>
<b>6</b>	<i>Somerset Academy South Miami</i>
<b>7</b>	<i>Terrace Community Middle School</i>
<b>8</b>	<i>Just Arts and Management Charter</i>
<b>9</b>	<i>East Lake Middle School Academy of Engineering</i>
<b>10</b>	<i>Don Estridge High Tech Middle School</i>



2017-2018 School Grades	
	
	
<b>Middle Schools in Pinellas County</b>	<b>Middle Schools in the State of Florida</b>
<b>Top Five Middle Schools in Pinellas County, Florida</b>	<b>Top Ten Middle Schools in the State of Florida</b>
1 East Lake Middle School Academy of Engineering	1 Doris Academy of Technology
2 Clearwater Fundamental Middle School	2 Archimedes Middle Conservatory
3 Thurgood Marshall Fundamental	3 Okaloosa STEAM Center
4 Joseph L. Cowley Middle School	4 Bok Middle School of the Arts
5 Palm Harbor Middle School	5 George Washington Carver Middle
	6 Sonenvat Academy South Miami
	7 Terrace Community Middle School
	8 Avic Arts and Management Charter
	9 East Lake Middle School Academy of Engineering
	10 Oak Ridge High Tech Middle School



**Number 1 Again, 2017-2018!**  
**ELMS finished number one in Pinellas**  
**county for all middle schools, and number**  
**9 in the state of Florida!**



## Business & Parent Sponsorship

### **Eagle Sponsor — \$100 to \$249**

Your business/name will appear in the outside display case.

### **Silver Sponsor — \$250 to \$499**

Your business/name will appear in the outside display case  
& on the school marquee.

### **Gold Sponsor — \$500 and up**

Your business/name will appear in the outside display case &  
on the school marquee and in the school newsletter.

Name: \_\_\_\_\_ Date: \_\_\_\_\_

Business Name: \_\_\_\_\_

Email: \_\_\_\_\_

Phone: \_\_\_\_\_

Once the office receives your form, we will request an electronic copy of your  
business logo or business card to use for marketing purposes.

If you have any questions, please contact, Amira Ray.

rayam@pcsb.org, or 727-940-7624

### **MISSION 100% STUDENT SUCCESS**

**East Lake Middle School Academy of Engineering will prepare students to be  
college and career ready and have the skills to compete in a global society.**

The School Board of Pinellas County, Florida, prohibits any and all forms  
of discrimination and harassment based on race, color, sex, religion, national origin,  
marital status, age, sexual orientation or disability in any of its programs,  
services or activities.