

Behavior Services



School Climate and Behavior Team

In alignment with the district mission and vision, the Climate and Behavior team will assist leadership teams in building the capacity of staff to ensure every learner's needs are met. An interdisciplinary team, including an MTSS Specialist, Social Worker, and Behavior Specialist will work to strengthen staff practices and school wide systems to improve overall school climate by leading with the PCS core values and deliberate coaching.

Multi- Tiered Systems of Support

Child Study Team

Contact: 727-588-5160



100% Student Success



School Climate and Behavior Behavior Services

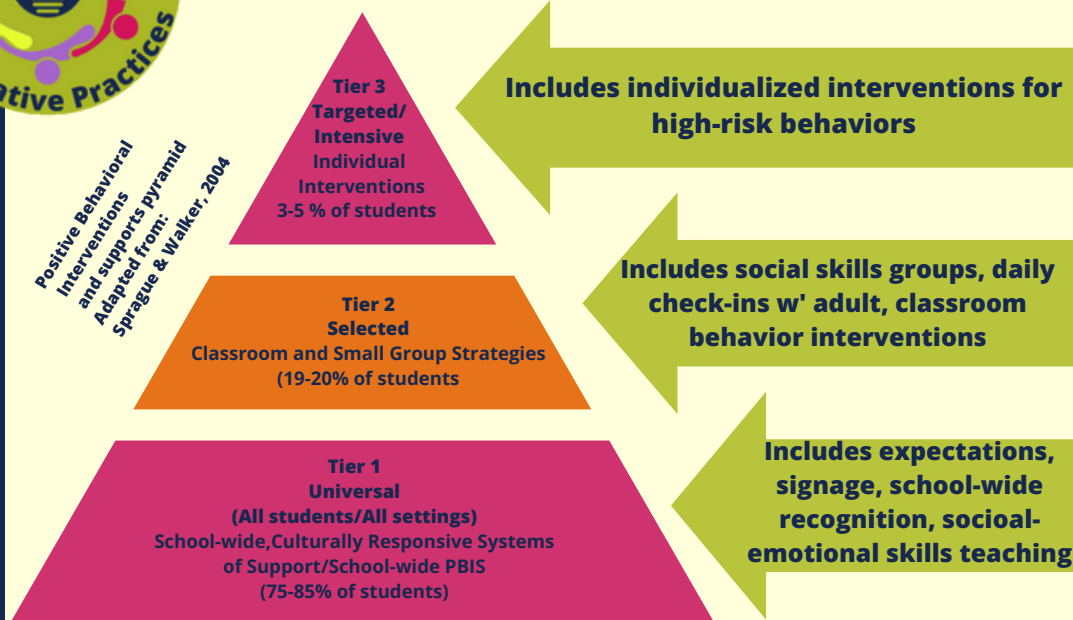


Behavior Services Overview

PBIS is the implementation and framework for maximizing selecting evidence-based prevention and intervention practices along a multi-tiered continuum that supports the academic, social, emotional, and behavioral abilities of all students.



Positive Behavioral Interventions & Supports (PBIS) Training for Tier 1, 2 & 3



- **PBIS promotes a reduction in disciplinary infractions, antisocial behavior, and substance abuse.**
- **PBIS promotes a reduction in aggressive behavior and improvements in emotional regulation.**
- **PBIS promotes improvements in academic engagement and achievement.**
- **PBIS Promotes improvements in perceptions of organizational health and school safety**
- **PBIS promotes a reduction in teacher and student reported bullying behavior and victimization.**
- **PBIS promotes improvements in overall school climate.**
- **PBIS promotes a reduction in teacher turnover.**



School Climate and Behavior

Multi-Tiered Systems of Support

MTSS Overview



- **Build fluency of leadership teams with the MTSS framework and processes**
- **Implement data-based problem solving and decision-making with fidelity for students' academic, attendance, behavioral, and emotional needs**
- **Support and coach staff in using tiered instruction in a manner that is accessible to all students**



School Climate and Behavior

Child Study Team

Student and Family Support Overview

Assist leadership teams with promoting family engagement, problem solving attendance concerns, and increase access to resources

School-based Services Include:

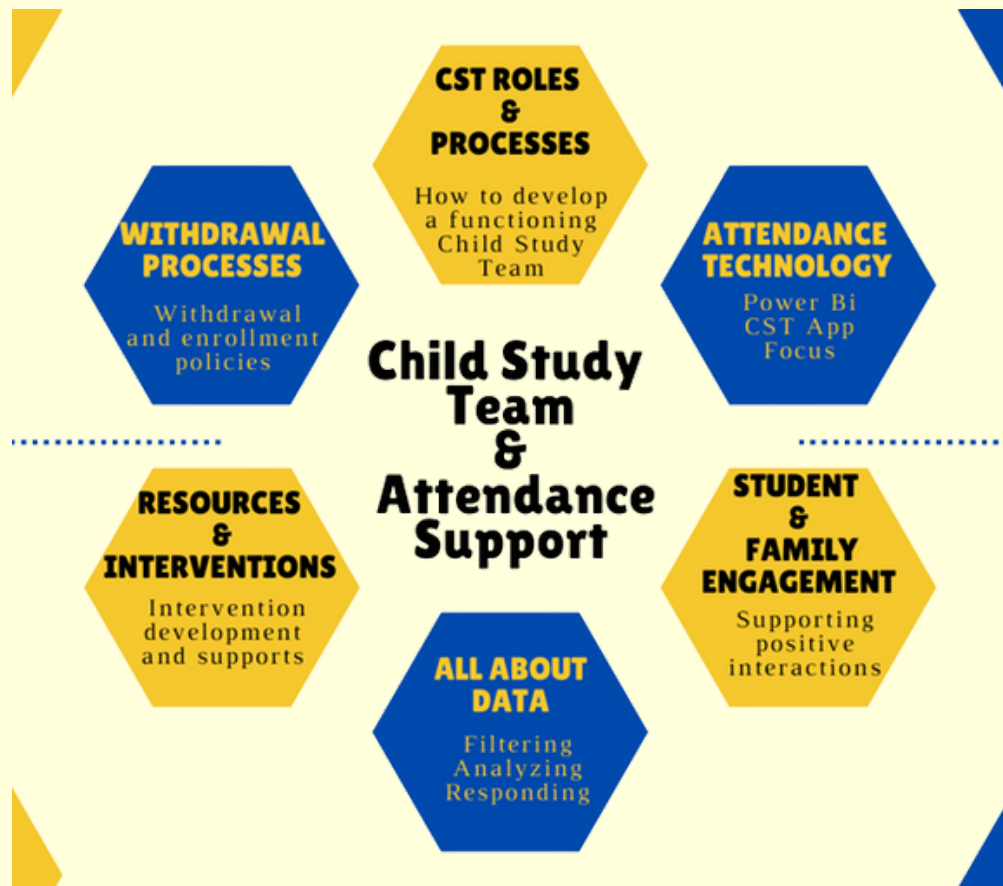
- Supporting school staff in development of tiered processes and interventions to improve student attendance.
- Assisting schools in utilizing early warning systems data (attendance, grades, behavior data, etc.) to identify and respond to student needs.
- Educating and connecting school teams with appropriate referrals to district and community services.
- Supporting school staff in identifying and re-engaging non-attending students.

District Level Initiatives Include:

- Reviewing and analyzing methods of tracking attendance to create more effective and efficient methods of reporting to improve upon data-based problem solving.
- Participating within a multi-disciplinary team to connect systems to monitor and respond to district wide attendance data.
- Liaison between schools and Office of the State Attorney's Truancy programs.

School Climate and Behavior

Child Study Team



CST Resource Links:

[Staff Intranet Attendance Page](#)

[Attendance Dashboard Training](#)

[Attendance Standard Operating Procedures](#)

[Attendance Information Share Point](#)

